

URARA Conservation and Preservation

Update on Conservation and Preservation Committee Activities

URARA 2024 Symposium
Beaver, Utah



Helping to Preserve Rock Art

URARA Conservation and Preservation Committee

What do we do?

- **Monitor**

Development and other Activities that could Impact Rock Art

- **Engage**

Land Managers and Local Communities

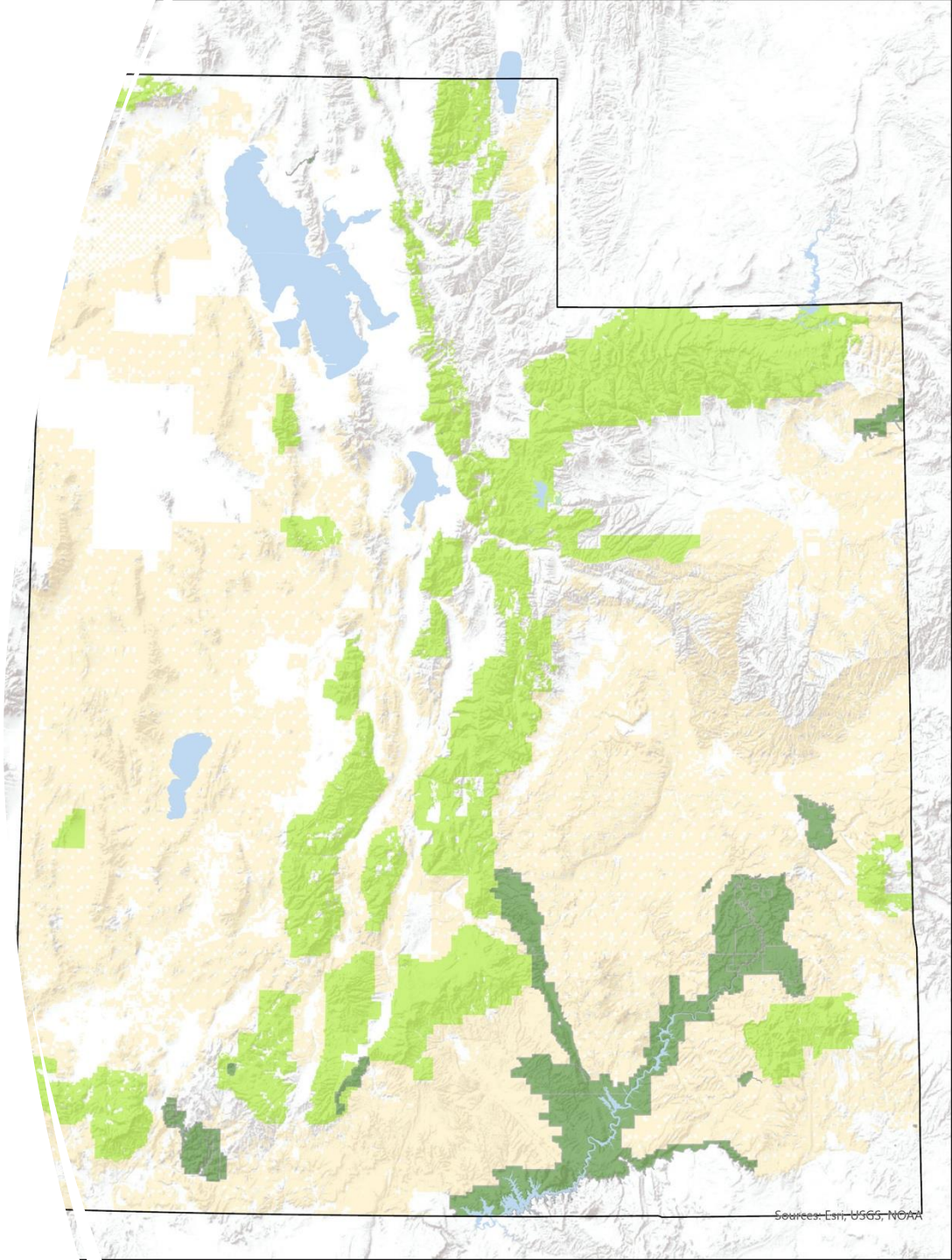
- **Act**

Volunteer Work
Advocacy

Monitor

Development on Federal Land

**Development guided by the
National Environmental
Policy Act (NEPA)**



Monitor

*Development on
BLM Land*

(Bureau of Land Management)

**That's where the Rock
Art is**

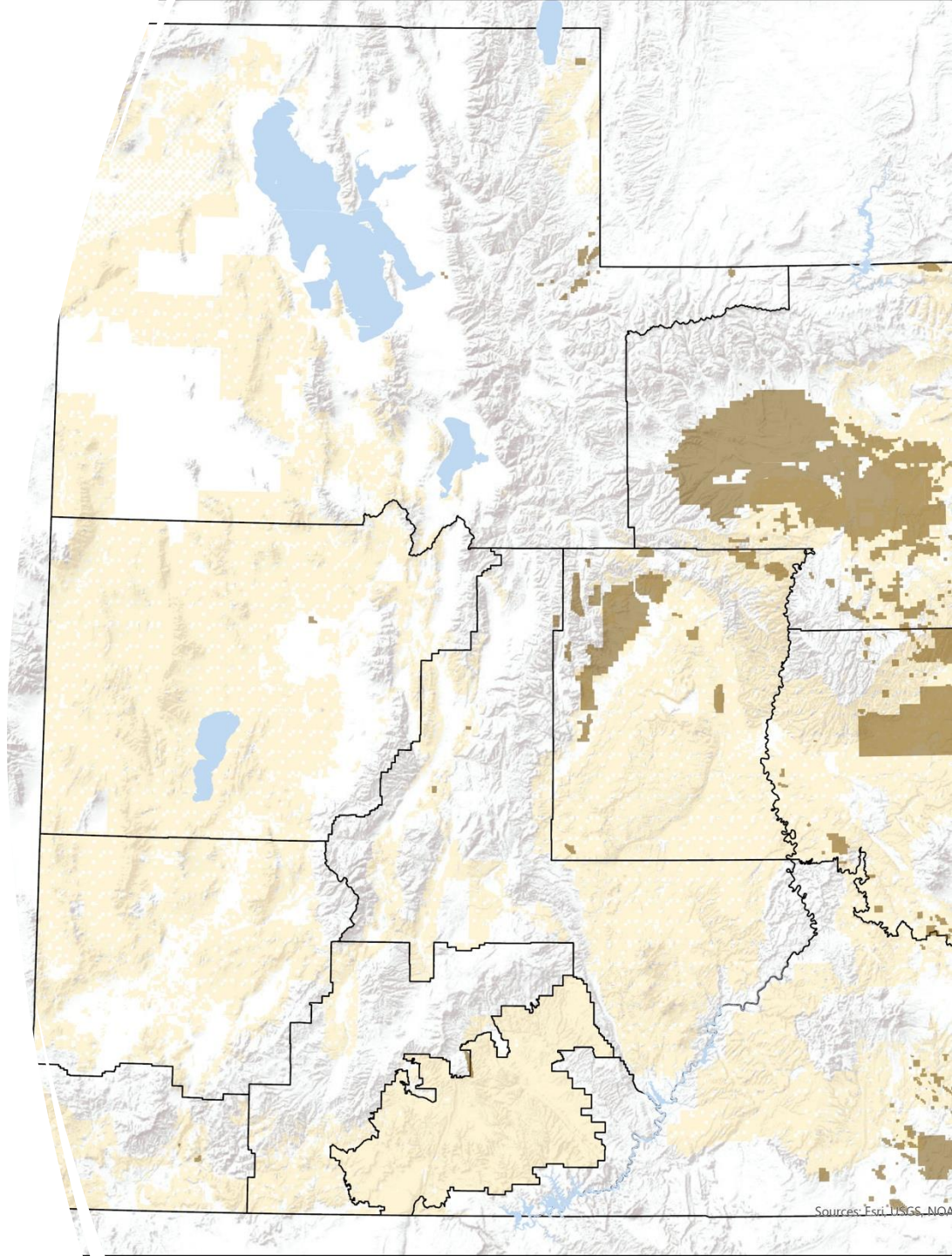


Monitor

*Development on BLM
Land*

Where the Oil and Gas
is..

Utah Oil and Gas Fields

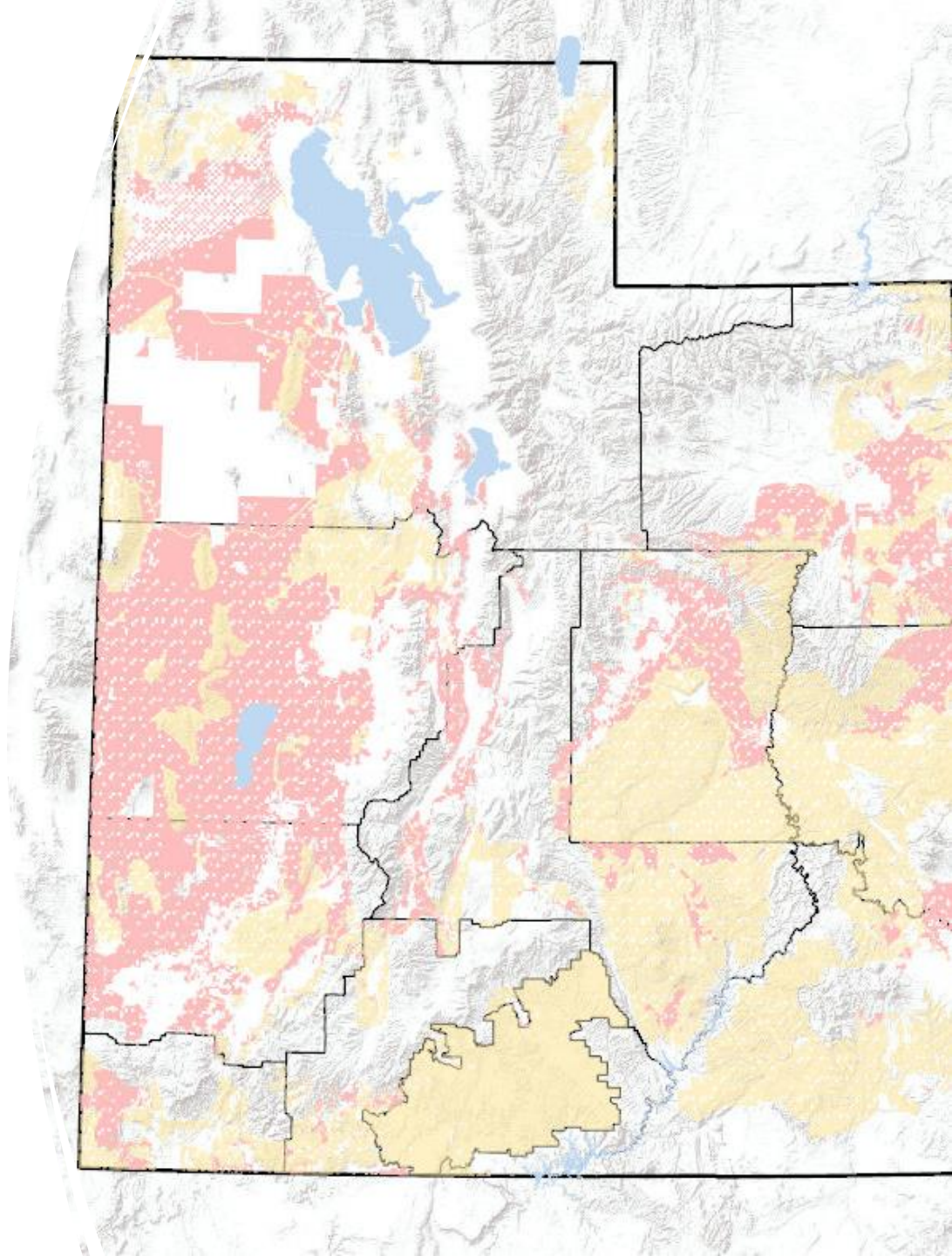


Monitor

*Development on
BLM Land*

*Where the Renewable
Energy Development
is..*

*1,371 Sites in Alternative 1 of the
Programmatic Draft EIS – Utility
Scale Solar*

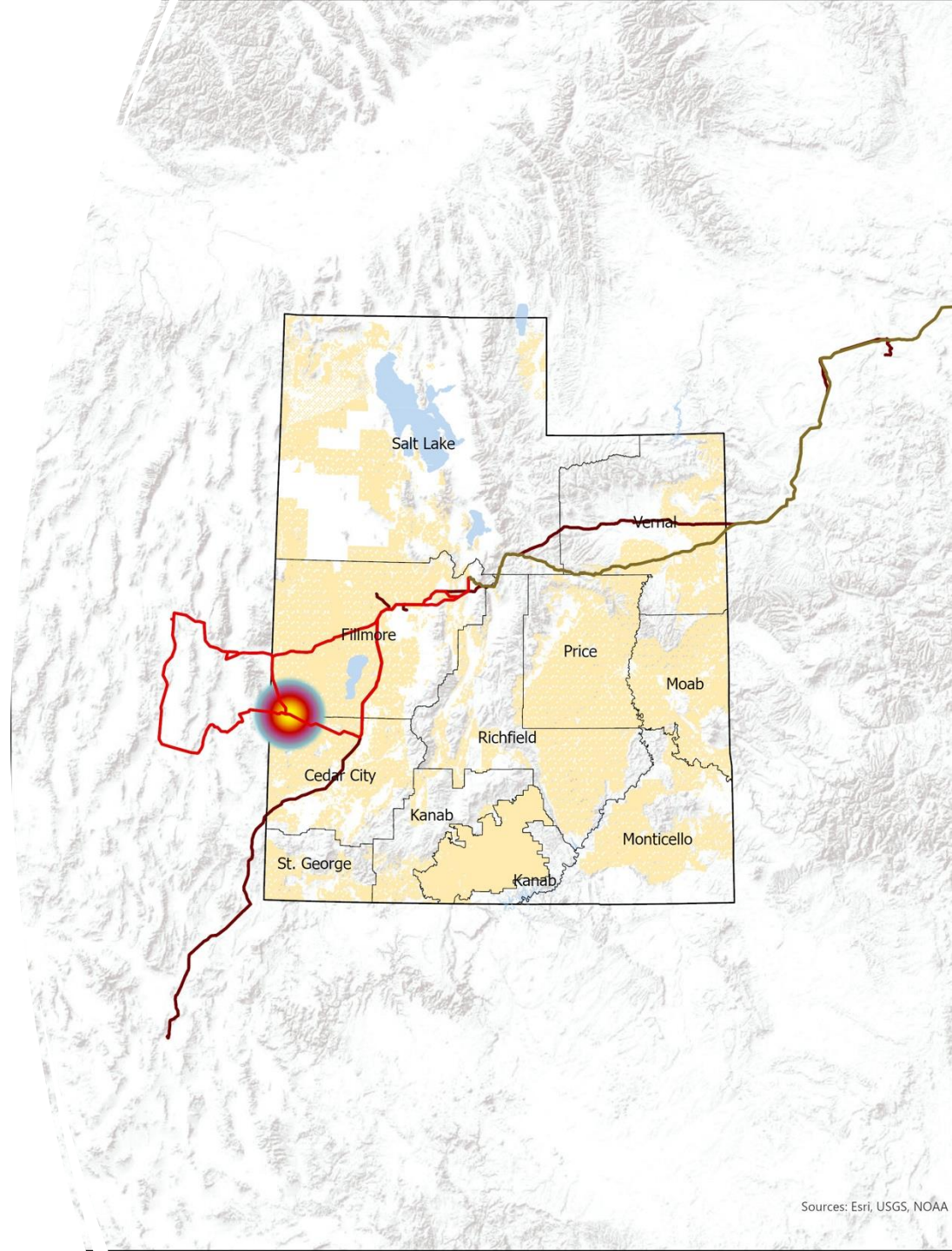


Monitor

Development on BLM Land

Where the Transmission Line Corridors are....

Cross Tie Transmission Line Draft EIS
13 Sites in Right of Way



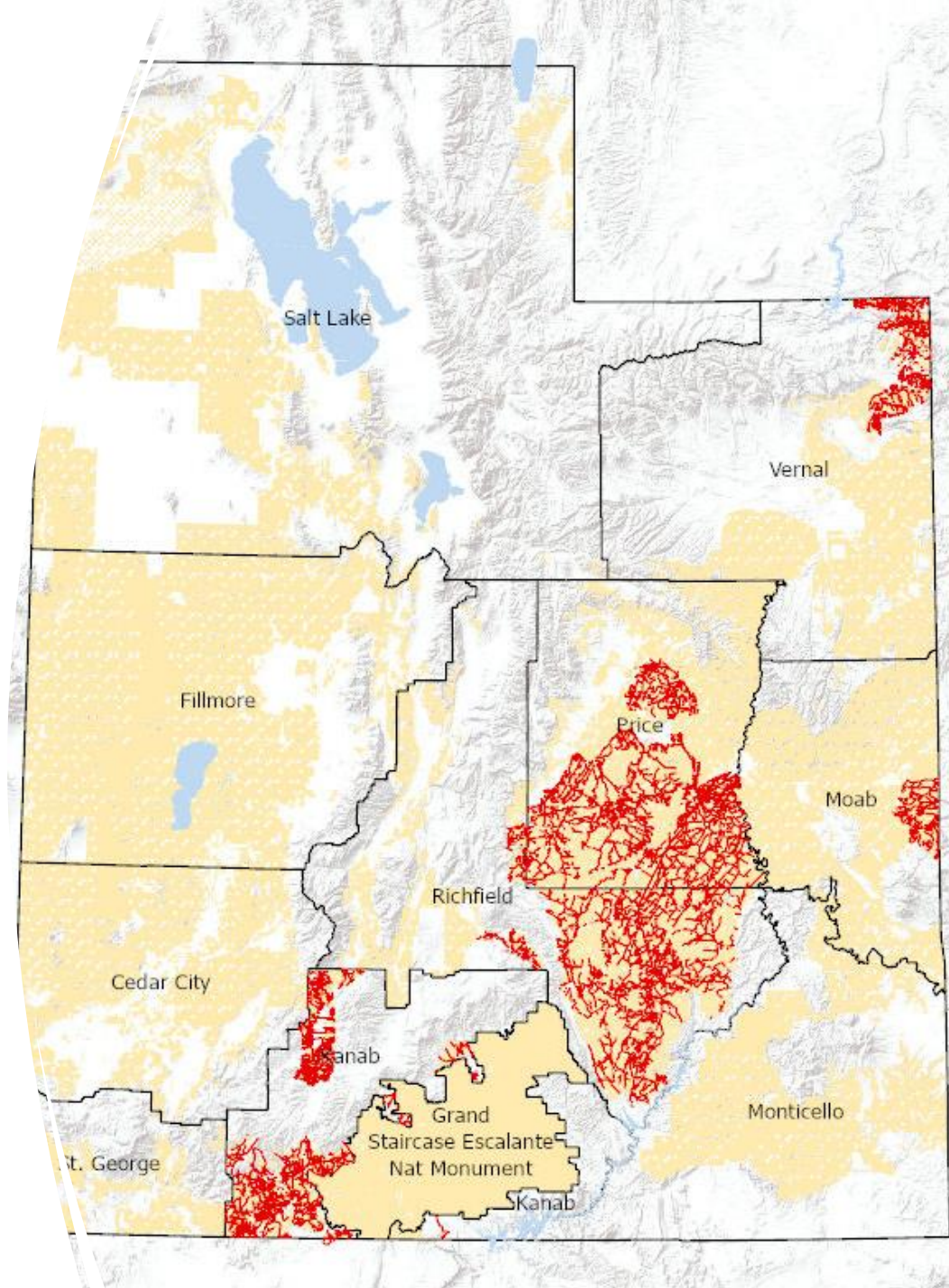
Monitor

Development on BLM Land

Where the Off-Highway
Vehicle (OHV) routes
are..

BLM Travel Management Plans

Routes will be designated to form an off-highway vehicle (OHV) travel route networks



Monitor – Other Activities

Target Shooting

Shooting Range near Rock Art Panels at Lake Mtn

Bullet Strike on Rock Art Panel



Petroglyph Fragment below Panel



Monitor – other activities

Vandalism

URARA App – 10/22/2023



URARA App – 3/21/2024



Monitor

How we do it

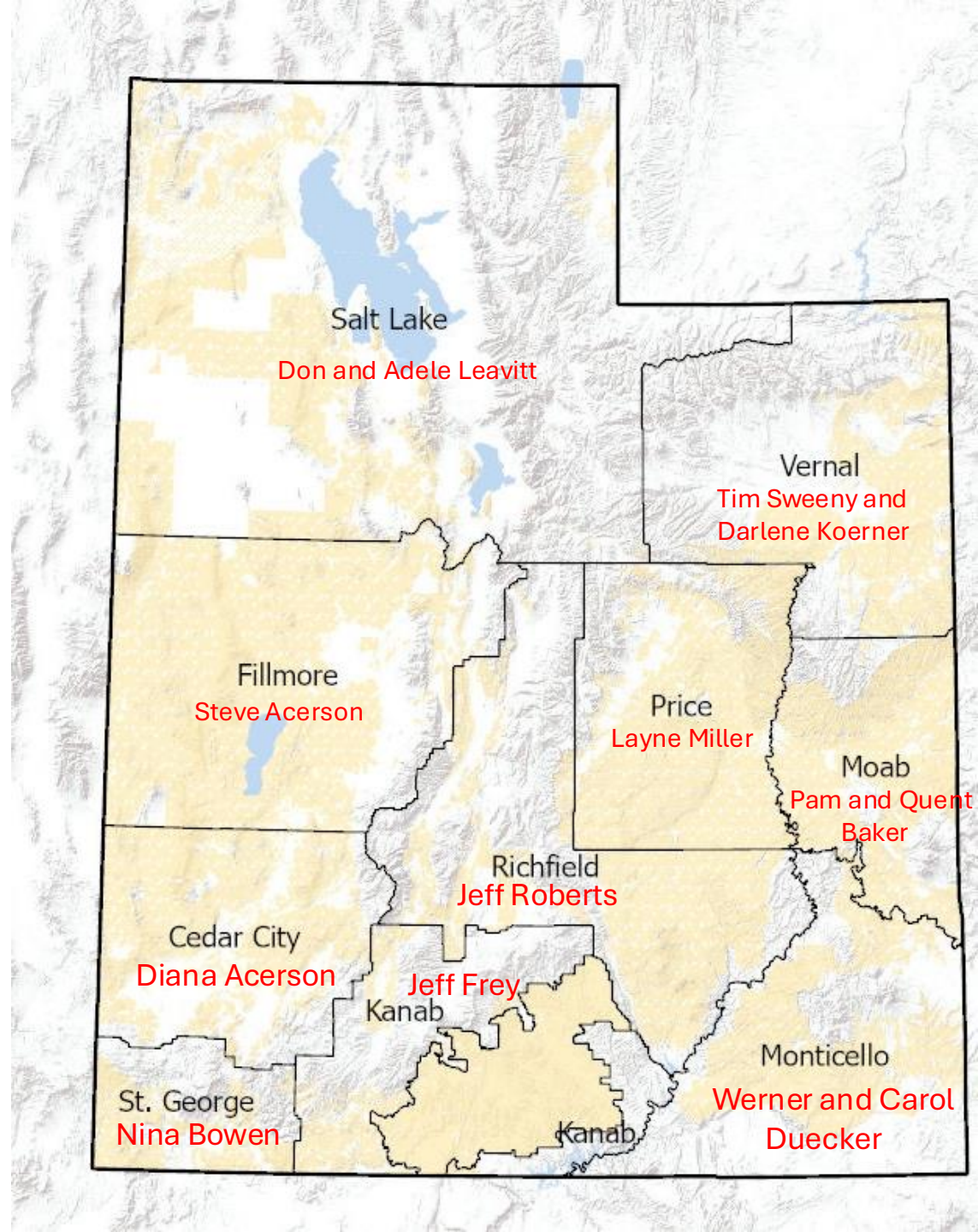
- Conservation Coordinators – URARA members in regional locations
 - Eyes and ears on the ground
 - Established connections with local land managers and the community
- Monitor Federal Information Portals
 - BLM ePlanning for planned development

Engage

Let Land Managers know where Proposed Development and Activities could Impact Rock Art/Cultural Resources

- Formal Consultation through Section 106 of the National Historical Preservation Act
- Direct contact through URARA Conservation Coordinators and/or CP Committee
- Contribute to SHPO Site Database

URARA Conservation Coordinators



Moab

- URARA has consulting party status for the Dolores Travel Management Plan. We don't have concerns about the sites we know. The BLM already knows all of these sites.
- The Lisbon Valley Copper Mine proposed expansion. Quent and Pam attended the public meeting about the project. We are not familiar with any rock imagery sites in the area. Amy (BLM archaeologist) told us they have found one rock imagery site in the area. She is very on top of the situation.

Price

- Consulting Party for BLM San Rafael Swell Travel Management Plan
- Assist with BLM Close Range Photogrammetry Project in Nile Mile Canyon

Salt Lake

- Lake Mountain Shooting Range Update

Vernal

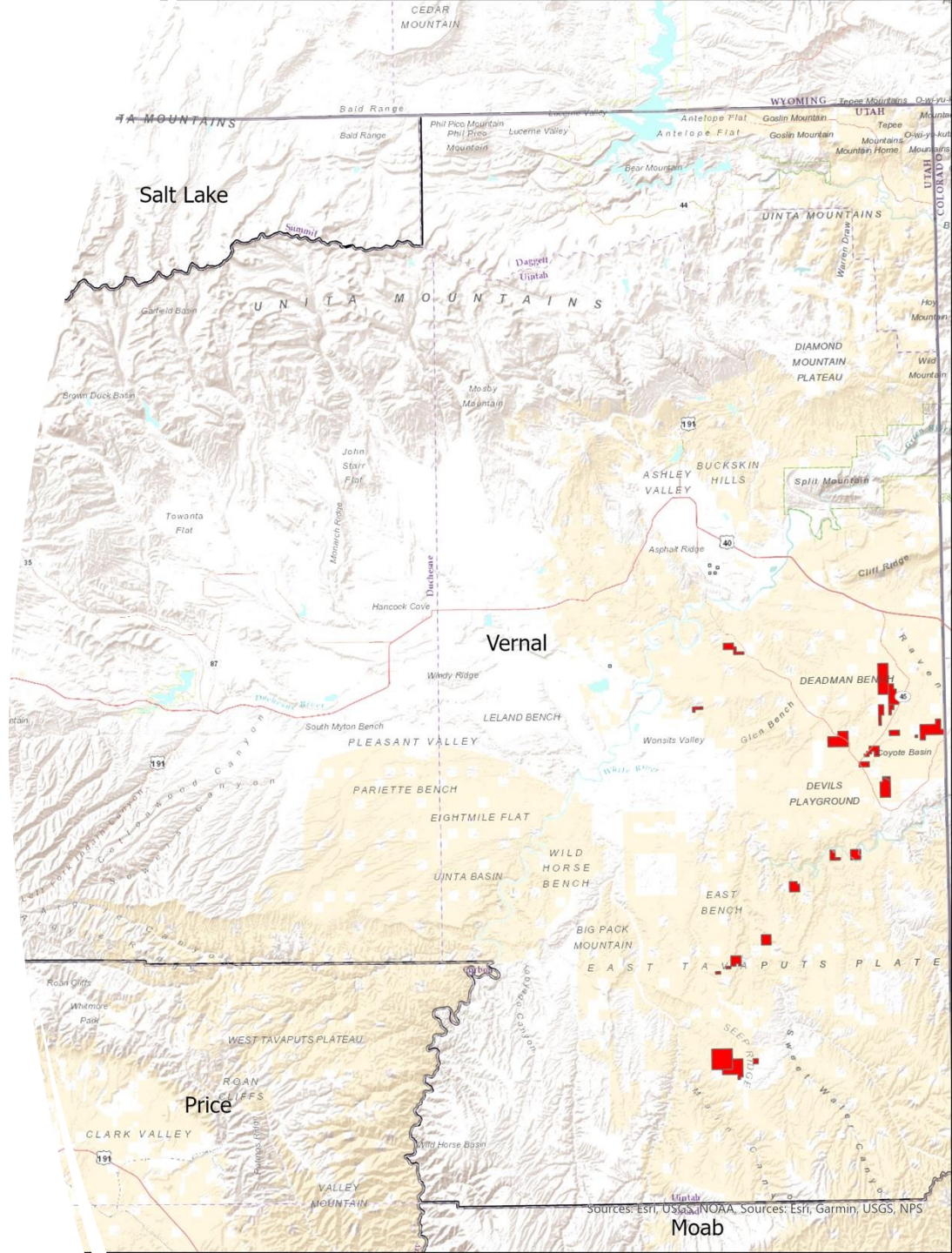


Engage

Consulting Party

BLM Oil and Gas Leasing

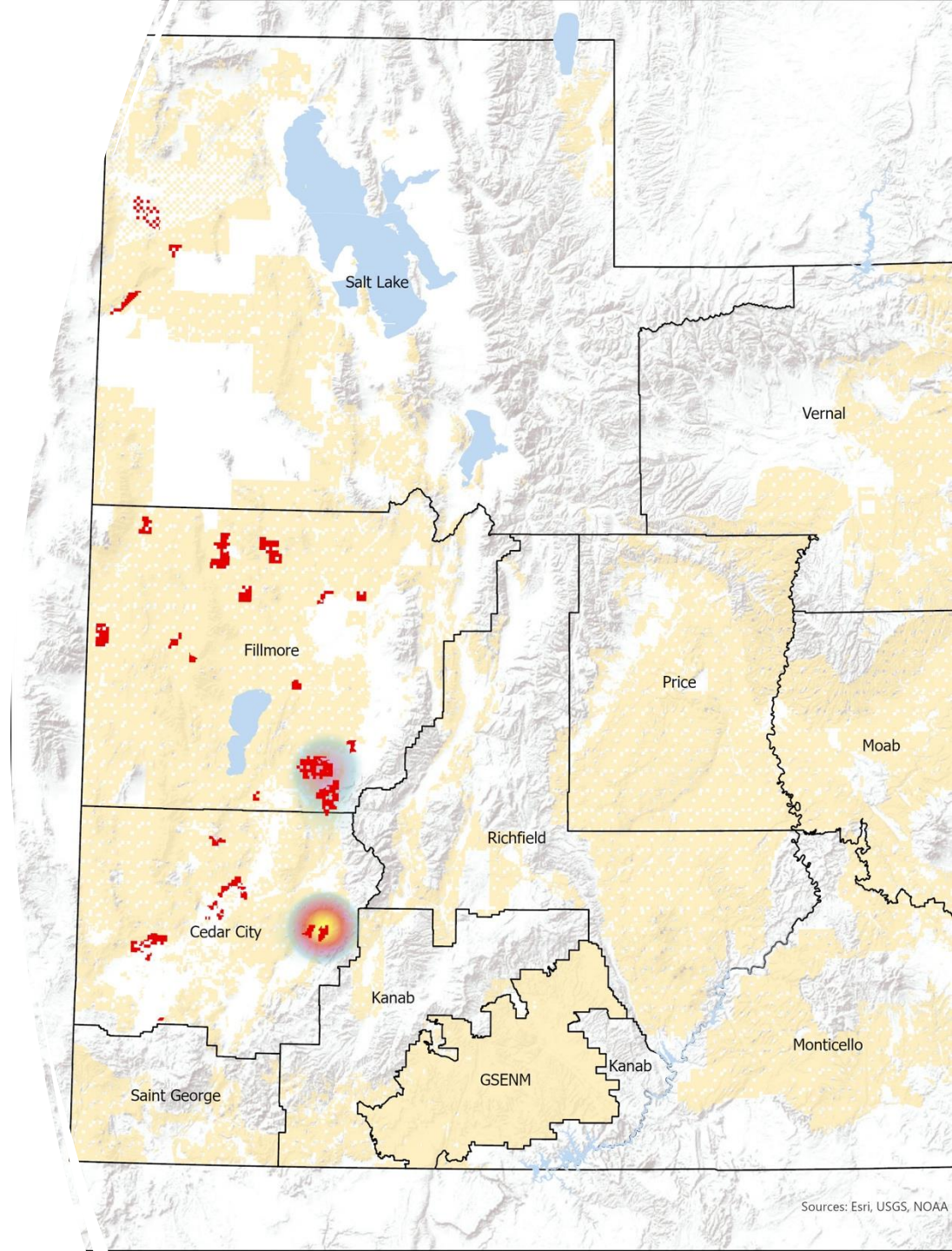
- 1st Quarter 2024 Lease Sale
- 2nd Quarter 2025 Lease Sale



Engage

Consulting Party

BLM 2025 Geothermal Lease Sale



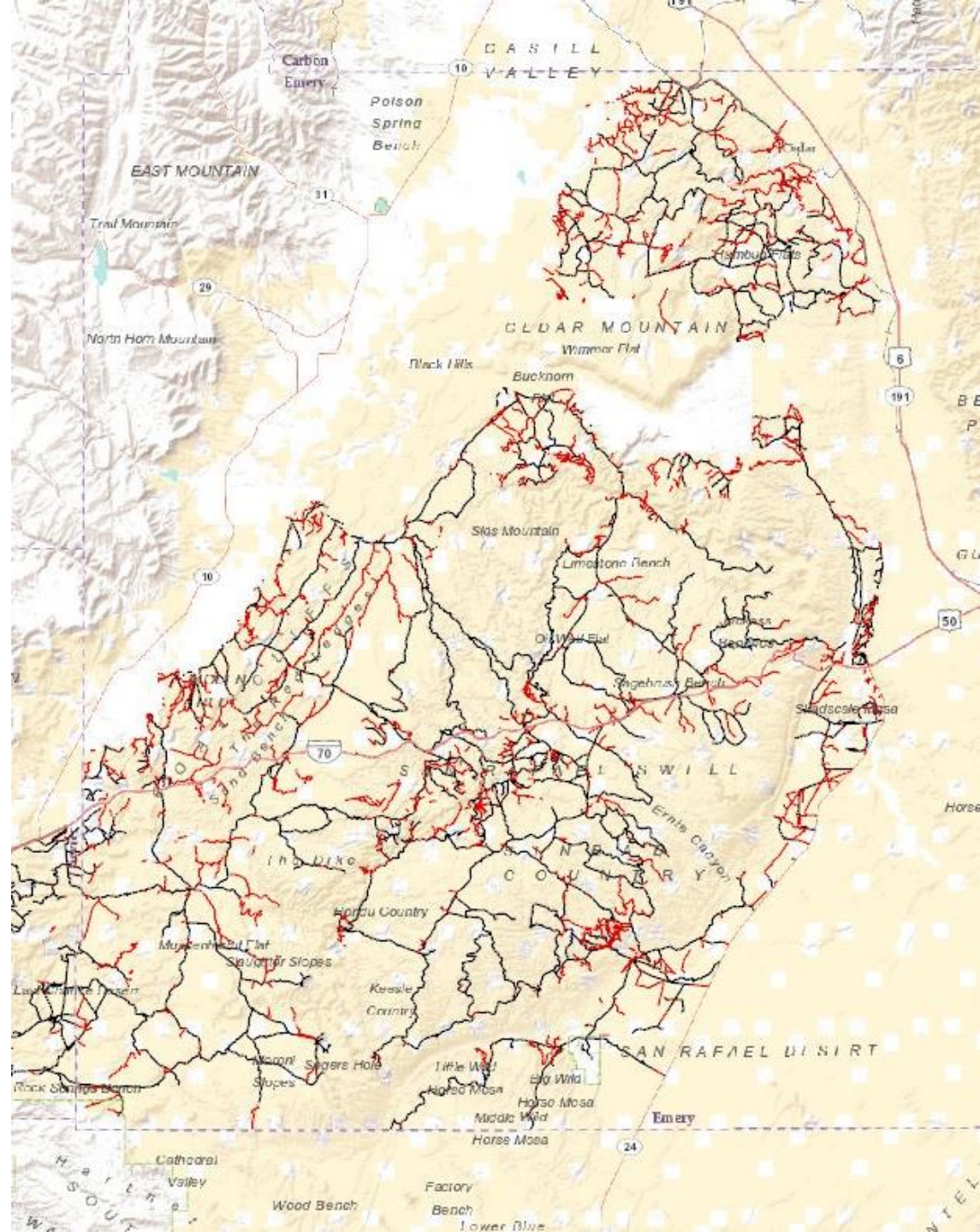
Engage

Consulting Party

BLM San Rafael Swell
Travel Management
Plan

833 mile of New
Routes

Jonathon Bailey,
URARA C&P



Engage

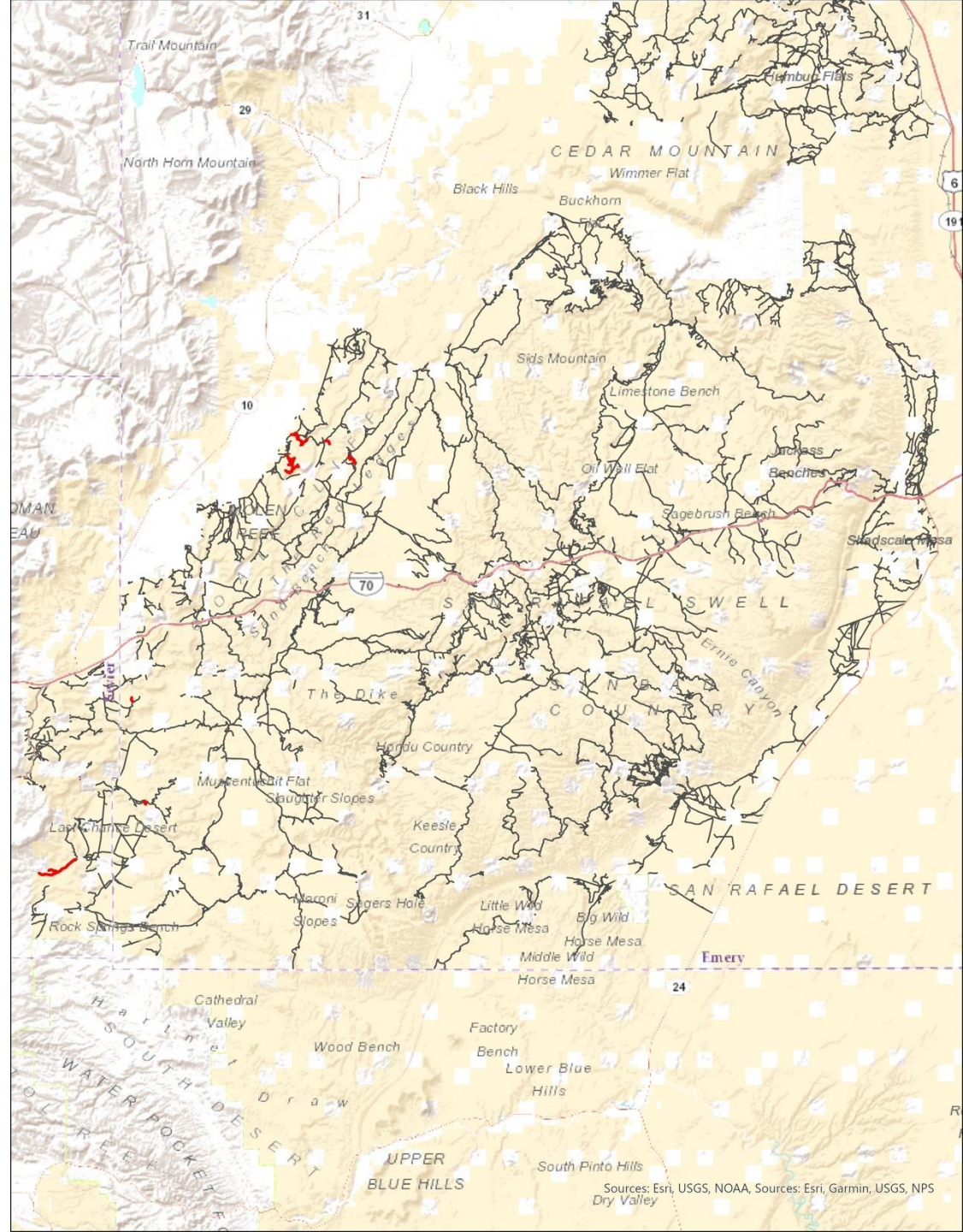
Consulting Party

BLM San Rafael Swell Travel Management Plan

14 miles closed

.5% out of 2,539 miles
total

Jonathon Bailey,
URARA C&P



Basis of Consultation on Travel Routes

- **Routes that lead directly to archaeological sites**
 - Close or manage as “public” site
- **Well established routes with archaeological sites in close proximity**
 - Manage for high visitation
- **Effective route openings**
 - Avoid access to closed routes
- **Meaningful route management**
 - Place signage at natural choke points

Routes that Lead directly to Sites

2023 with route shown

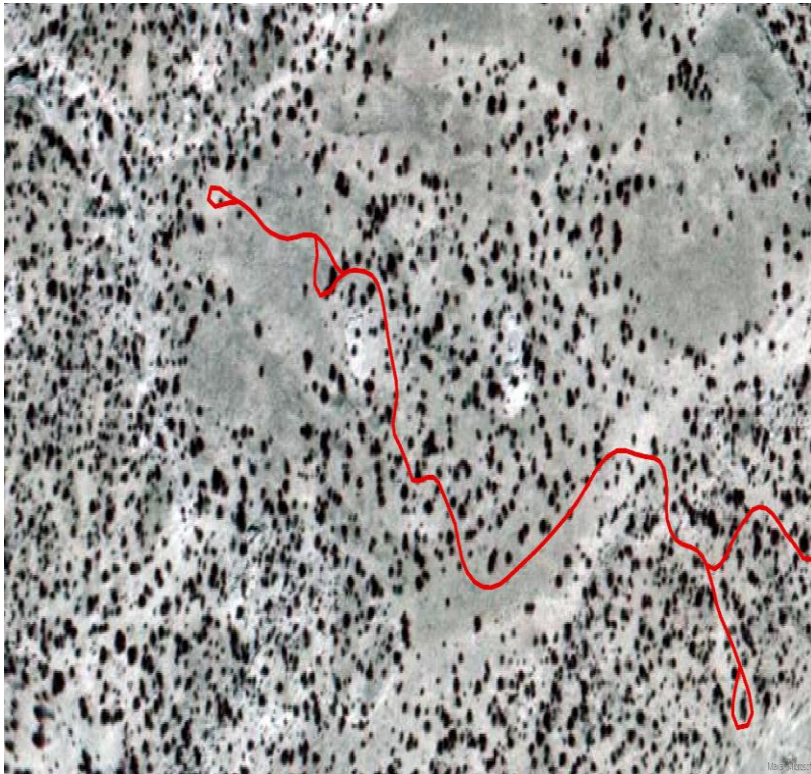


2023

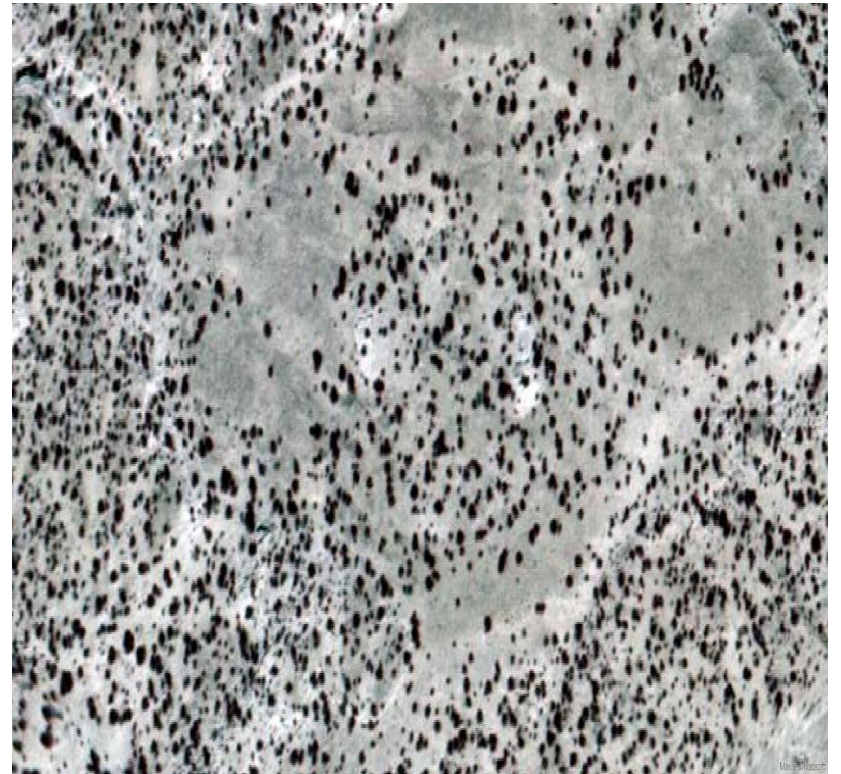


Routes that Lead directly to Sites

1974 with route shown



1974



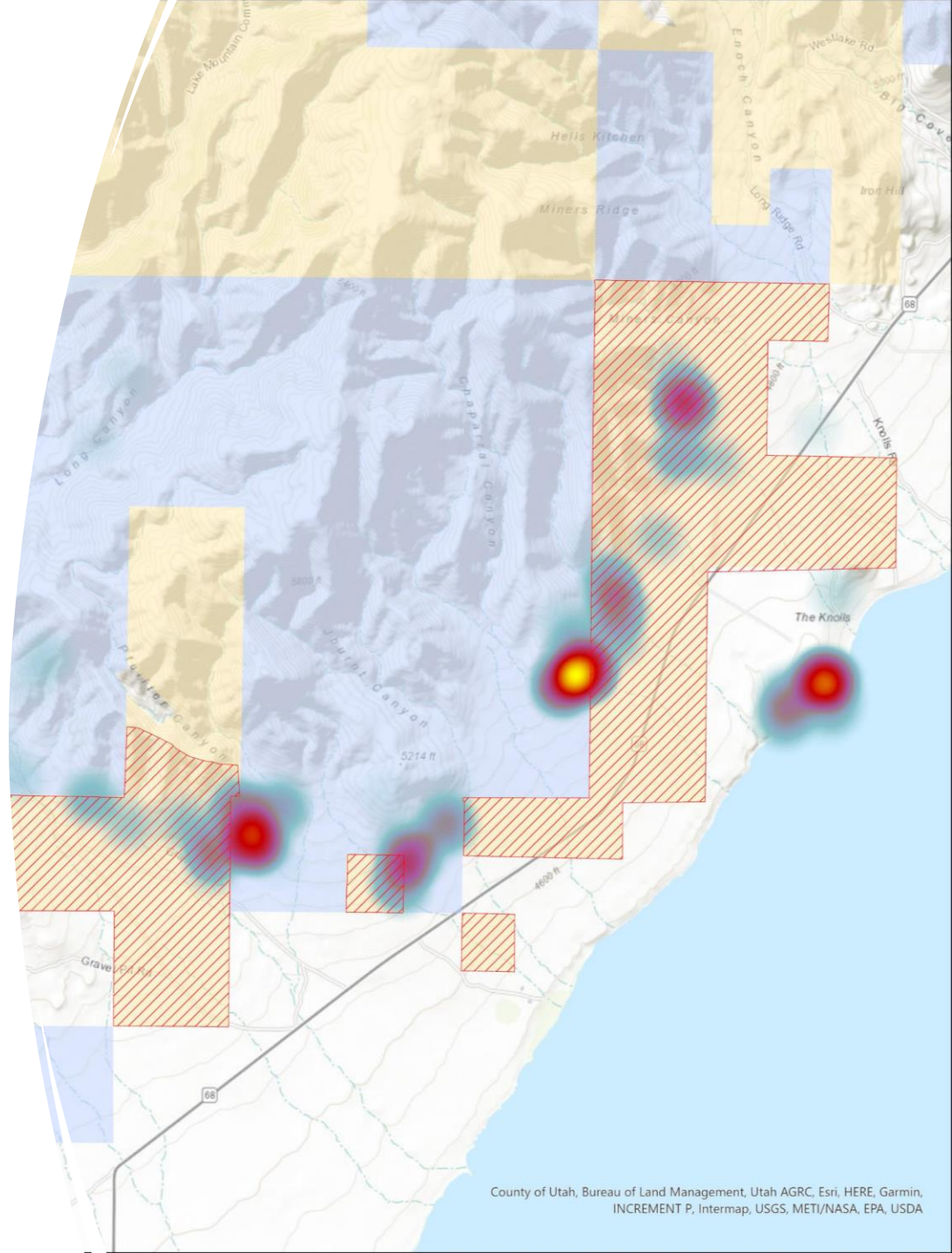
Act

Advocacy

*Lake Mtn Shooting
Range*

Target Shooting at Lake Mtn
Closed

Steve and Diana Acerson



Advocacy

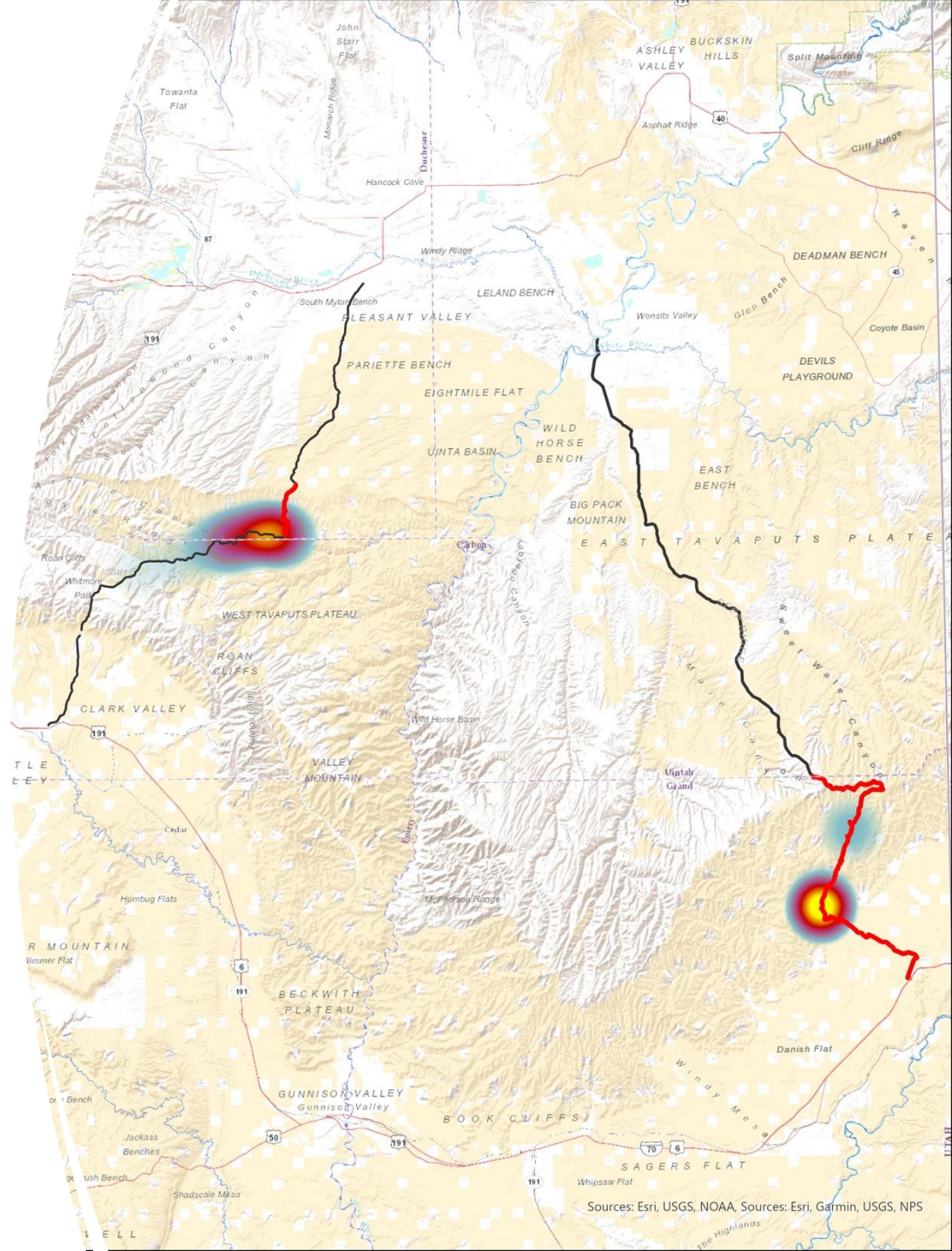
Uinta Basin Energy Development

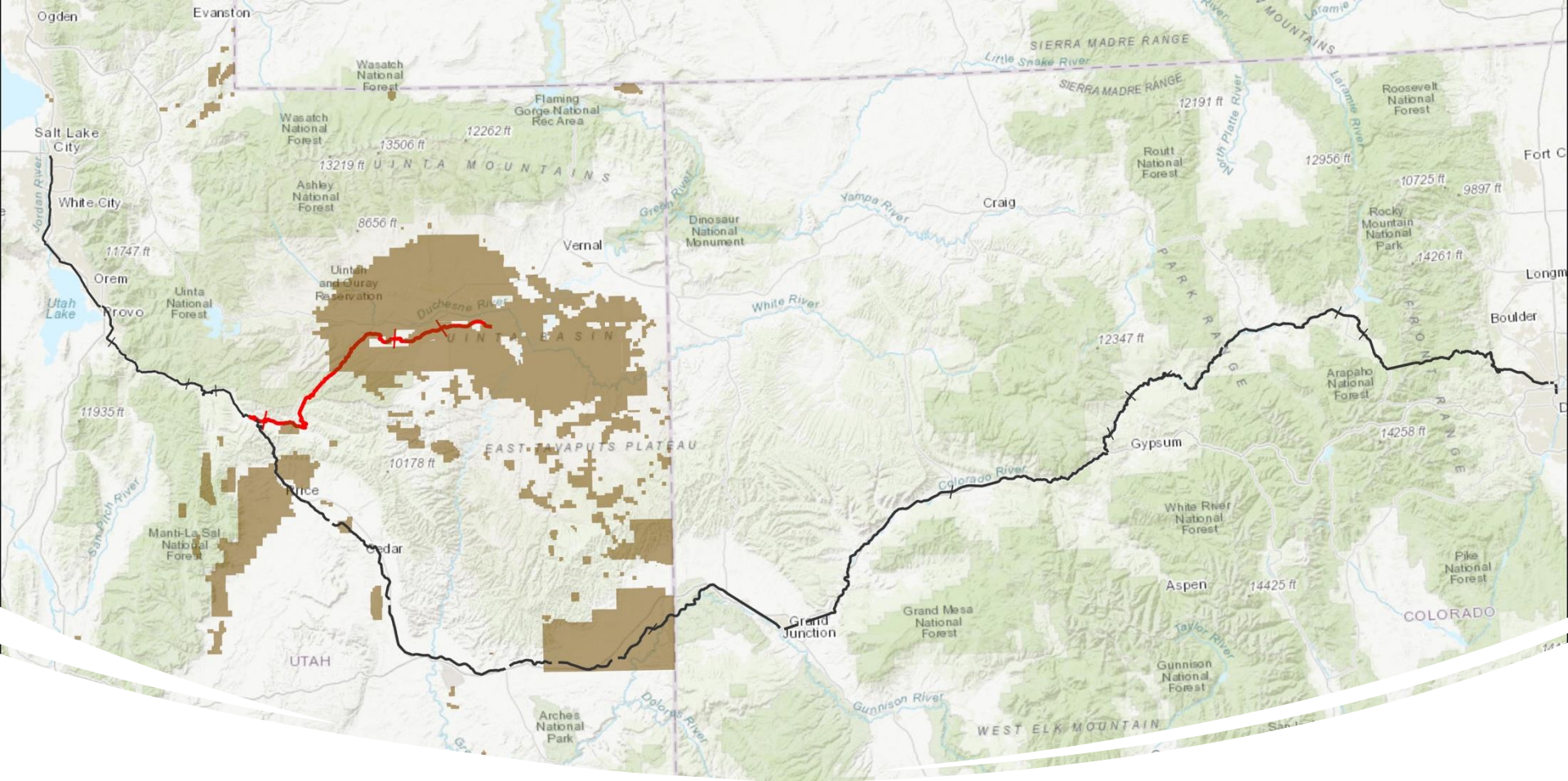
Wells Draw Road

165 sites within 100m of Nine Mile Canyon Road

Book Cliffs Highway

8 Sites within 100m of Book Cliffs Road

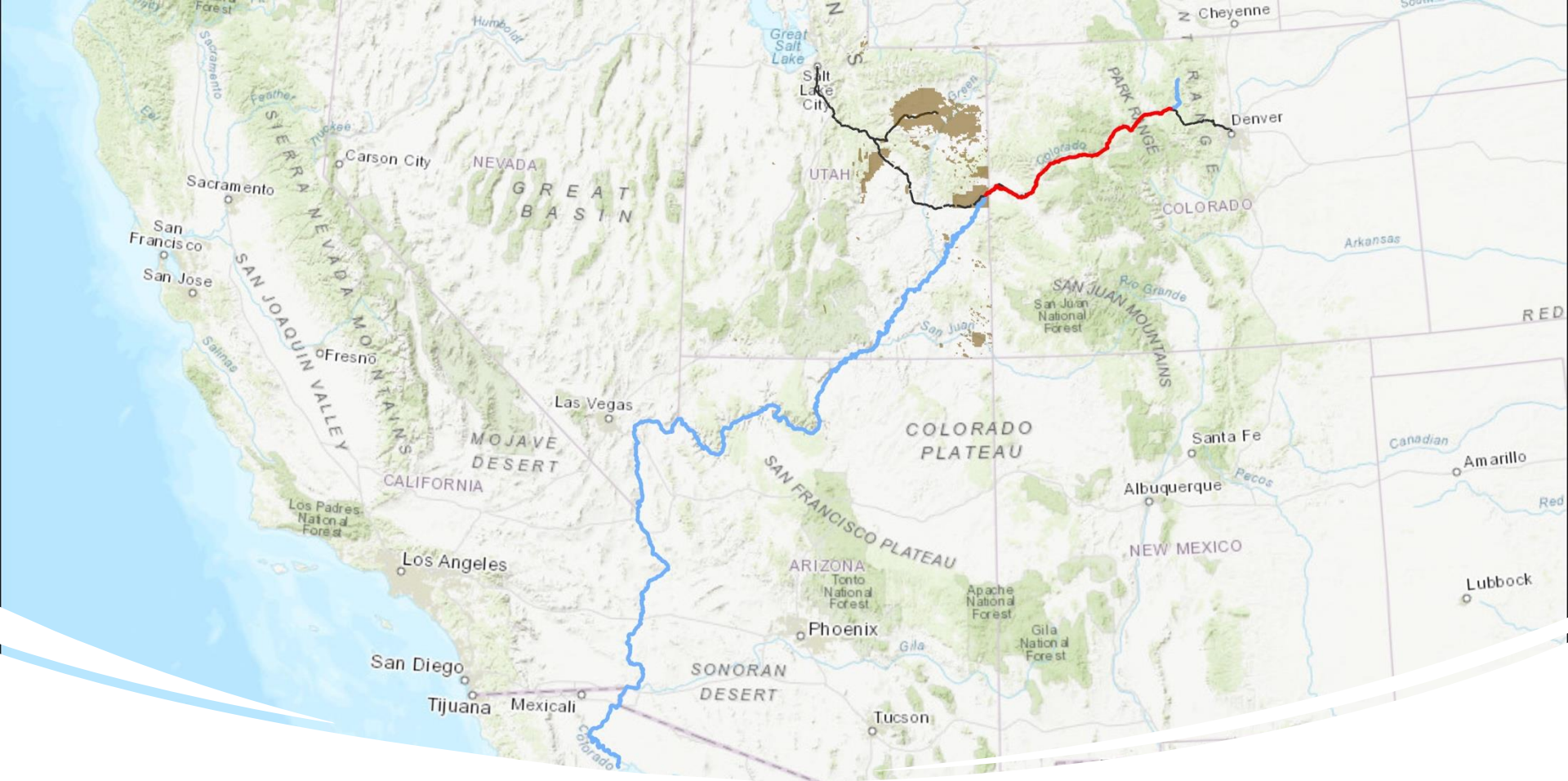




Bigger
Picture

Uinta Basin Energy Development

Uinta Basin Railroad



Even Bigger Picture

Uinta Basin Energy Development

Potential Effects much broader than Utah.....
Railroad follows Colorado River for 252 miles

Colorado Advocacy Groups filed Lawsuit

Act

Advocacy

Impacts on Nine Mile Canyon Rock Art

- Layne Miller
- Radio Interview
- [Story Map](#)



Act

Volunteer

Work Projects

Sponsored and Supervised
by Land Managers

Flash Flood Debris

Great Hunt Panel

Nine Mile Canyon, October 2021



Act

***Hard Working
Happy Volunteers!***

Flash Flood Debris
at Great Hunt Panel

Nine Mile Canyon, October 2021



Act

What can you do?

- Volunteer
 - Work Projects
 - URARA Committees
 - Consider being a Site Steward with UCSS Program
- Do your own Monitoring
 - If you see something illegal – contact law enforcement
 - Know where you are at
 - Carry a map that shows land ownership
 - BLM Avenza Georeferenced Maps
 - Use URARA app to record and report site conditions
- Keep an Eye on Local Media