

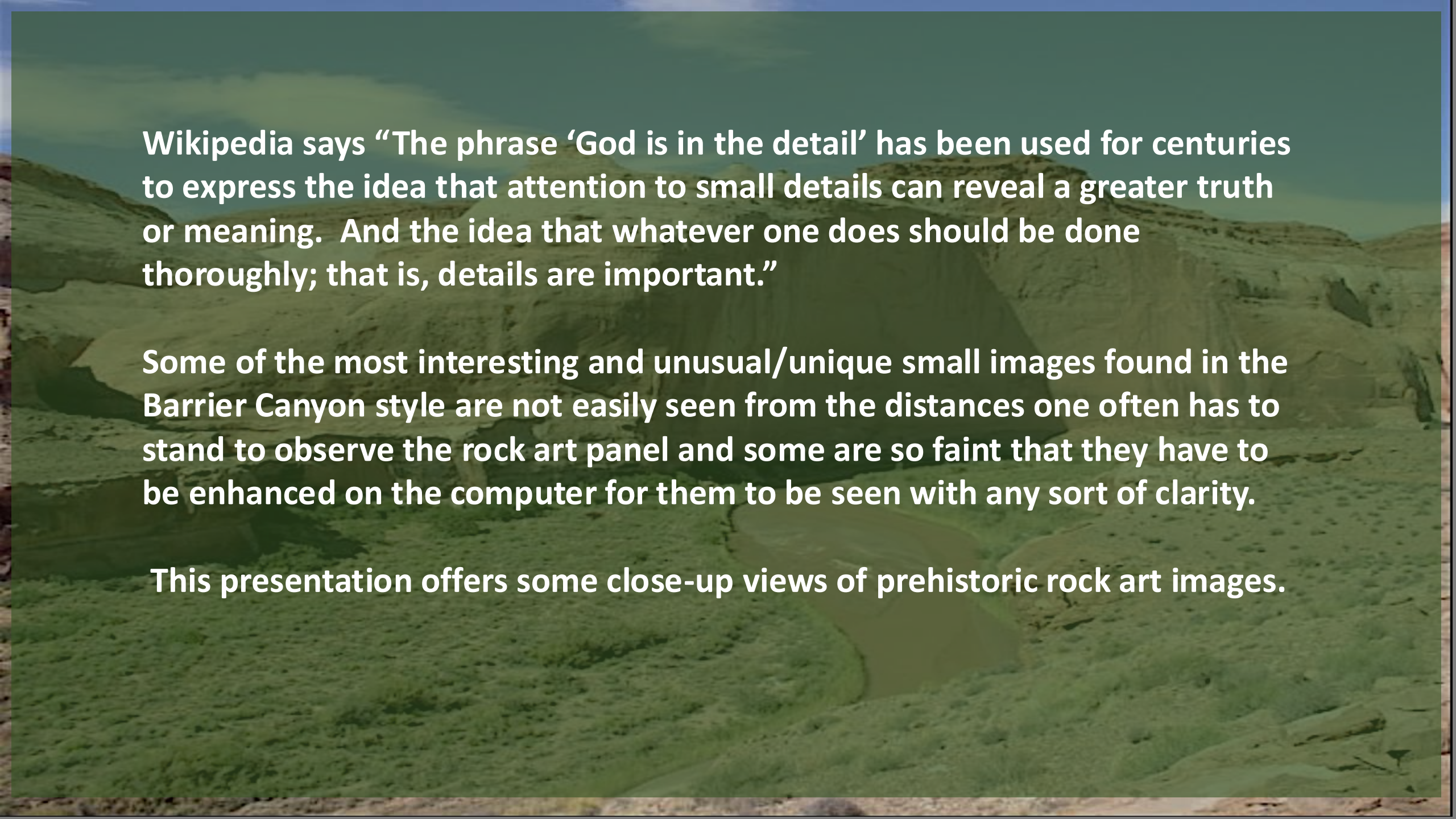


GOD IS IN THE DETAIL

Seldom Seen Details In Barrier Canyon Style Rock Art

David Sucec, BCS PROJECT
www.bcsproject.org

URARA Symposium
2024



Wikipedia says “The phrase ‘God is in the detail’ has been used for centuries to express the idea that attention to small details can reveal a greater truth or meaning. And the idea that whatever one does should be done thoroughly; that is, details are important.”

Some of the most interesting and unusual/unique small images found in the Barrier Canyon style are not easily seen from the distances one often has to stand to observe the rock art panel and some are so faint that they have to be enhanced on the computer for them to be seen with any sort of clarity.

This presentation offers some close-up views of prehistoric rock art images.

GOD IS IN THE DETAIL

> **BCS PROJECT STUDY AREAS**

- > GREEN RIVER SITES 1, 2
- > DIRTY DEVIL LOWER RIVER SITE
- > THOMPSON WESTERN BCS PANEL
- > ROCHESTER ROCK SITE
- > TALKING WITH SNAKES SITES
- > GREAT GALLERY MAMMOTH HEADS? PANEL
- > TRANSMISSION? PANEL

GOD IS IN THE DETAIL

> **BCS PROJECT STUDY AREAS**

- > GREEN RIVER SITES 1, 2
- > DIRTY DEVIL LOWER RIVER SITE
- > THOMPSON WESTERN BCS PANEL
- > ROCHESTER ROCK SITE
- > TALKING WITH SNAKES SITES
- > GREAT GALLERY MAMMOTH HEADS? PANEL
- > TRANSMISSION? PANEL

GOD IS IN THE DETAIL

> BCS PROJECT STUDY AREAS

> **GREEN RIVER SITES 1, 2**

> DIRTY DEVIL LOWER RIVER SITE

> THOMPSON WESTERN BCS PANEL

> ROCHESTER ROCK SITE

> TALKING WITH SNAKES SITES

> GREAT GALLERY MAMMOTH HEADS? PANEL

> TRANSMISSION? PANEL

GOD IS IN THE DETAIL

- > BCS PROJECT STUDY AREAS

- > GREEN RIVER SITES 1, 2

- > **DIRTY DEVIL LOWER RIVER SITE**

- > THOMPSON WESTERN BCS PANEL

- > ROCHESTER ROCK SITE

- > TALKING WITH SNAKES SITES

- > GREAT GALLERY MAMMOTHS HEADS? PANEL

- > TRANSMISSION? PANEL

GOD IS IN THE DETAIL

- > BCS PROJECT STUDY AREAS
- > GREEN RIVER SITES 1, 2
- > DIRTY DEVIL LOWER RIVER SITE
- > **THOMPSON WESTERN BCS PANEL**
- > ROCHESTER ROCK SITE
- > TALKING WITH SNAKES SITES
- > GREAT GALLERY MAMMOTH HEADS? PANEL
- > TRANSMISSION? PANEL

GOD IS IN THE DETAIL

- > BCS PROJECT STUDY AREAS
- > GREEN RIVER SITES 1, 2
- > DIRTY DEVIL LOWER RIVER SITE
- > THOMPSON WESTERN BCS PANEL
- > **ROCHESTER ROCK SITE**
- > TALKING WITH SNAKES SITES
- > GREAT GALLERY MAMMOTH HEADS? PANEL
- > TRANSMISSION? PANEL

GOD IS IN THE DETAIL

- > BCS PROJECT STUDY AREAS
- > GREEN RIVER SITES 1, 2
- > DIRTY DEVIL LOWER RIVER SITE
- > THOMPSON WESTERN BCS PANEL
- > ROCHESTER ROCK SITE
- > **TALKING WITH SNAKES SITES**
- > GREAT GALLERY MAMMOTH HEADS? PANEL
- > TRANSMISSION? PANEL

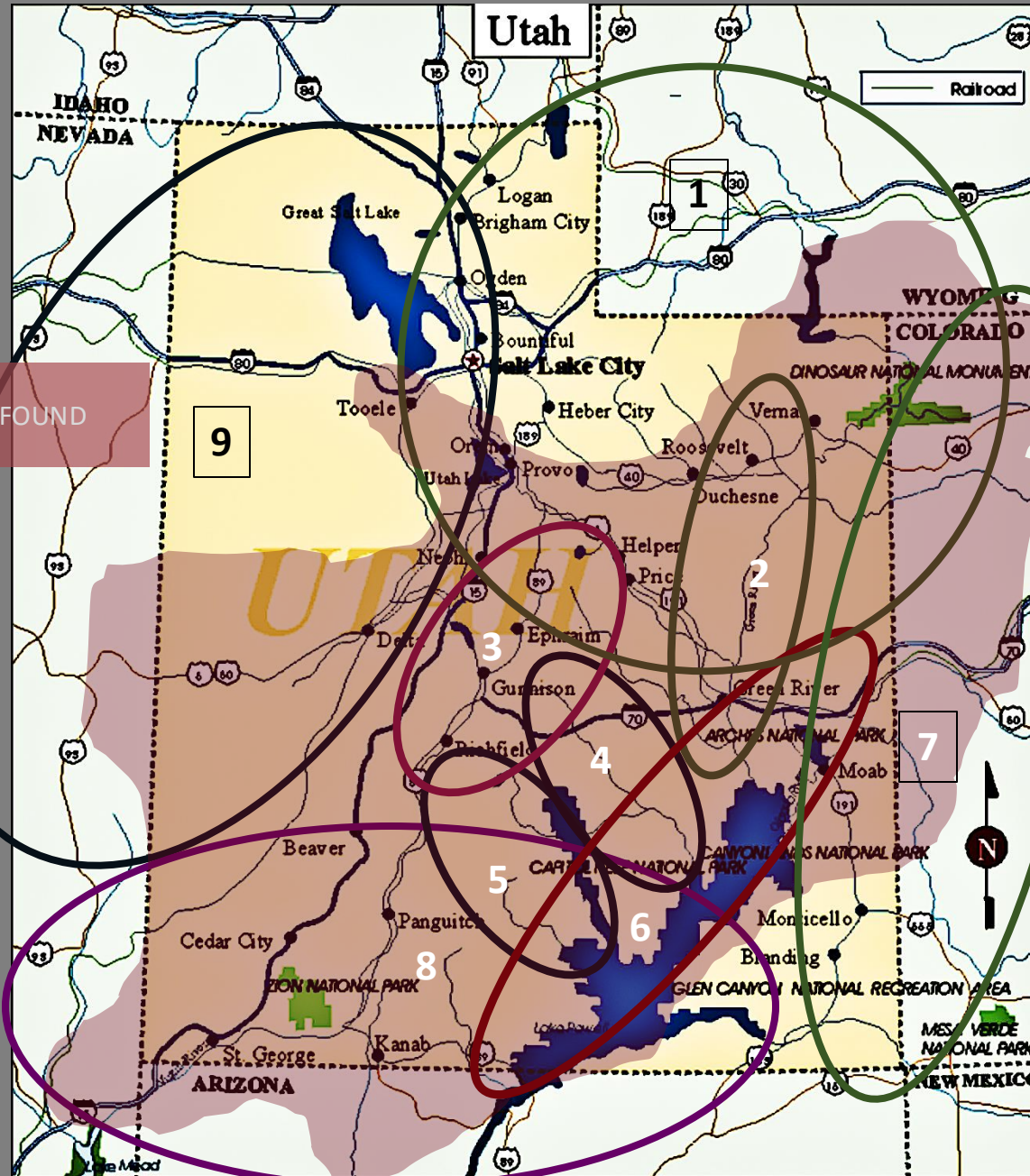
GOD IS IN THE DETAIL

- > BCS PROJECT STUDY AREAS
- > GREEN RIVER SITES 1, 2
- > DIRTY DEVIL LOWER RIVER SITE
- > THOMPSON WESTERN BCS PANEL
- > ROCHESTER ROCK SITE
- > TALKING WITH SNAKES SITES
- > **GREAT GALLERY MAMMOTH HEADS? PANEL**
- > TRANSMISSION? PANEL

GOD IS IN THE DETAIL

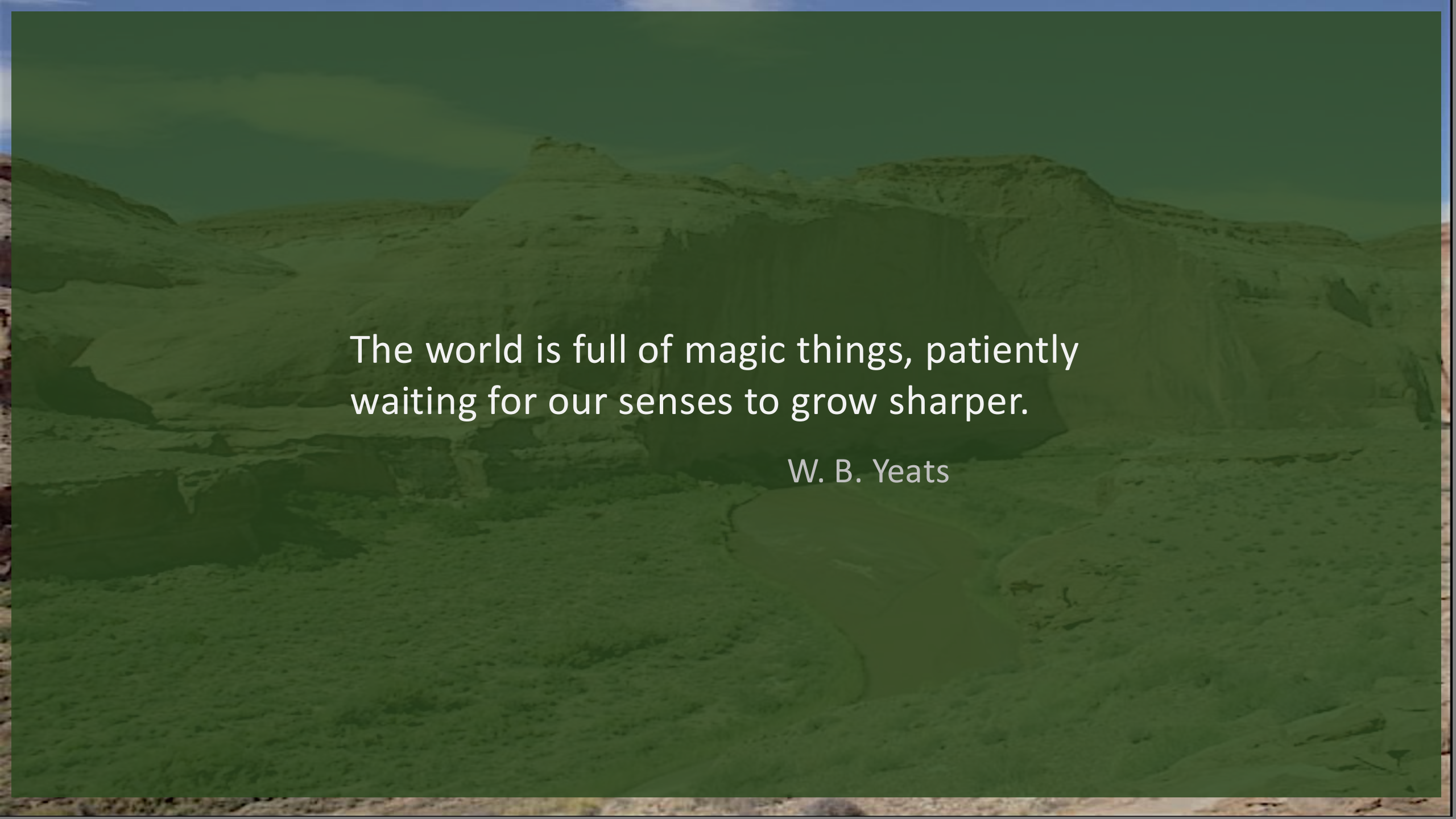
- > BCS PROJECT STUDY AREAS
- > GREEN RIVER SITES 1, 2
- > DIRTY DEVIL LOWER RIVER SITE
- > THOMPSON WESTERN BCS PANEL
- > ROCHESTER ROCK SITE
- > TALKING WITH SNAKES SITES
- > GREAT GALLERY MAMMOTH HEADS? PANEL
- > **TRANSMISSION? PANEL**

RED: BCS IMAGES FOUND



BCS PROJECT Primary Study Areas (2024)

1. Northern Study Area.
2. Green River Study Area.
3. San Rafael Study Area.
4. Dirty Devil Study Area.
5. Escalante Study Area (Grand Staircase/Escalante National Monument, Glen Canyon National Recreation Area).
6. Canyonlands Study Area (Glen Canyon National Recreation Area and Canyonlands National Park).
7. Eastern Study Area.
8. Southern Study Area. Arizona Strip, N. Arizona
9. Western Study Area (eastern Great Basin)



The world is full of magic things, patiently
waiting for our senses to grow sharper.

W. B. Yeats



NORTHERN STUDY AREA

Green River Sites 1, 2



Green River near confluence with the Yampa River.



Green River Site 1, West Panel, NSA.



Green River Site 1, West Panel, NSA.



Green River Site 1, West Panel, NSA.





Green River Site 2, NSA



DIRTY DEVIL STUDY AREA

Lower River Panel



DIRTY DEVIL LOWER RIVER SITE
Great Wall Site



DIRTY DEVIL LOWER RIVER SITE

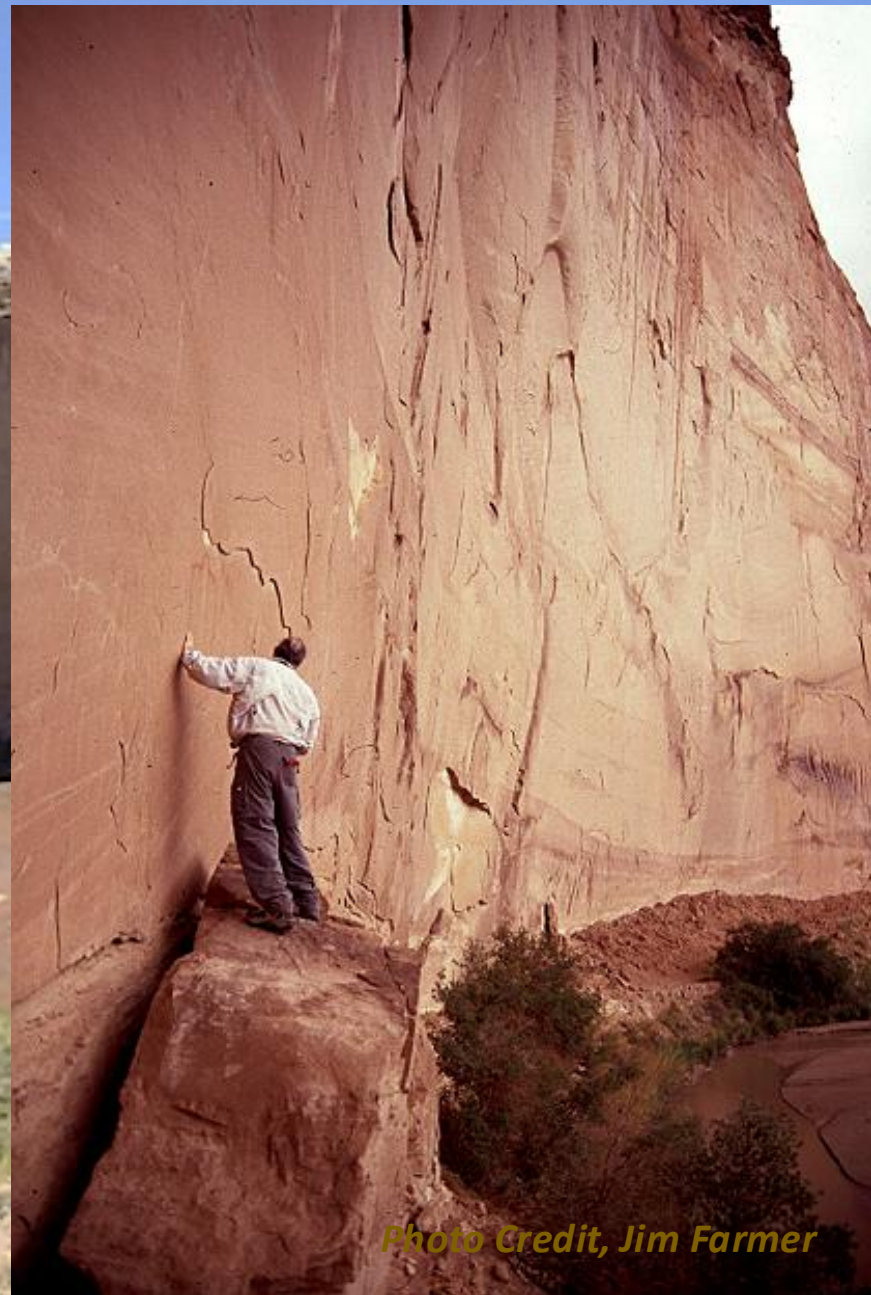


Photo Credit, Jim Farmer



Lower River Panel, DDSA. Photo Chris Rhodes



OVAL VARIANT Figure





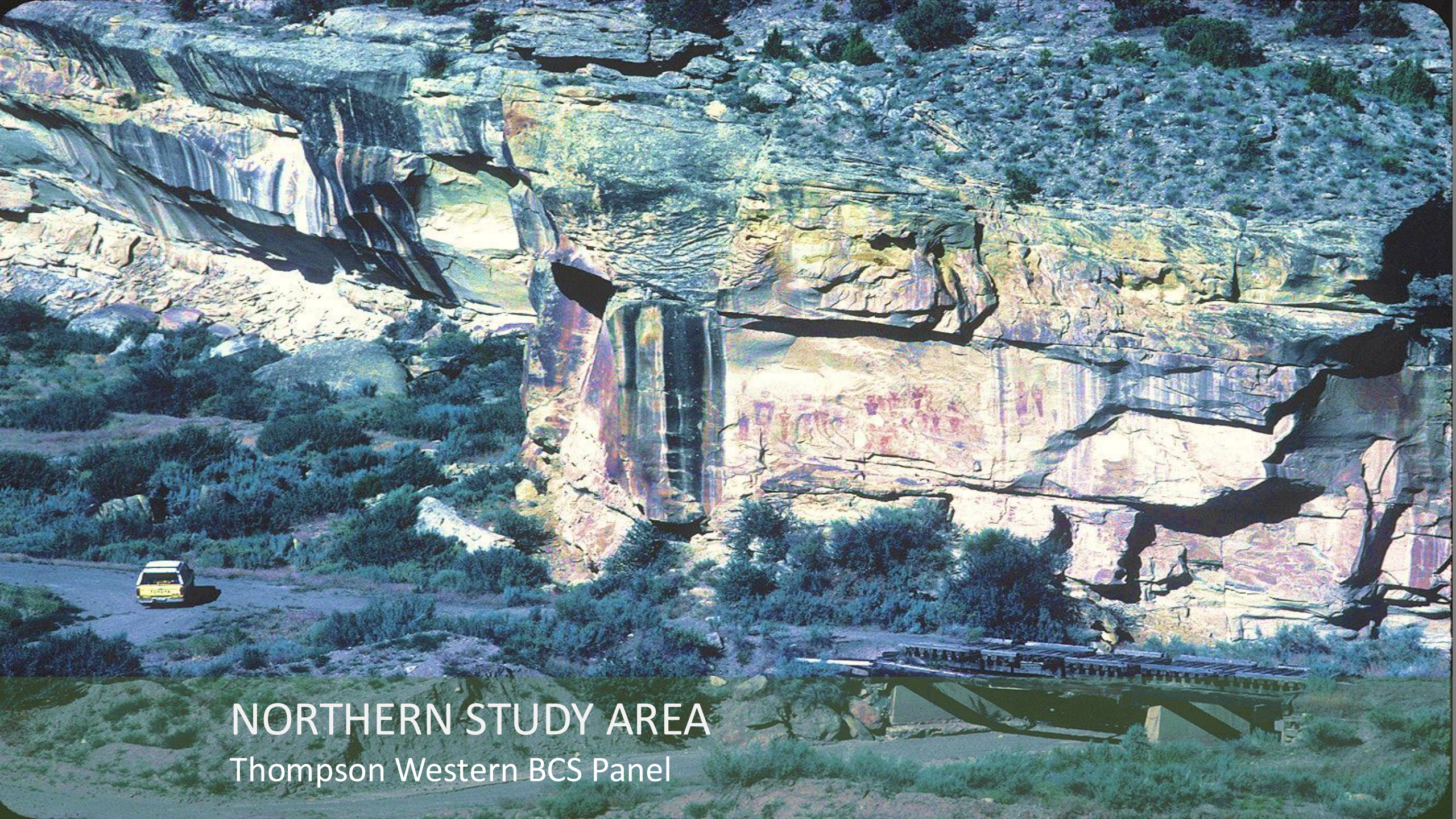
OVAL VARIANT, BC STYLE





THE OVAL FIGURE FORM IS
CULTURAL (GROUP) ICONOGRAPHY.
THE INTERIOR FORMS ARE THE CHOICES
OF THE IMAGE MAKER'.





NORTHERN STUDY AREA
Thompson Western BCS Panel



BCS Panel, western complex, Thompson Canyon. Post conservation.





Spirit Figure with Animal Familiars



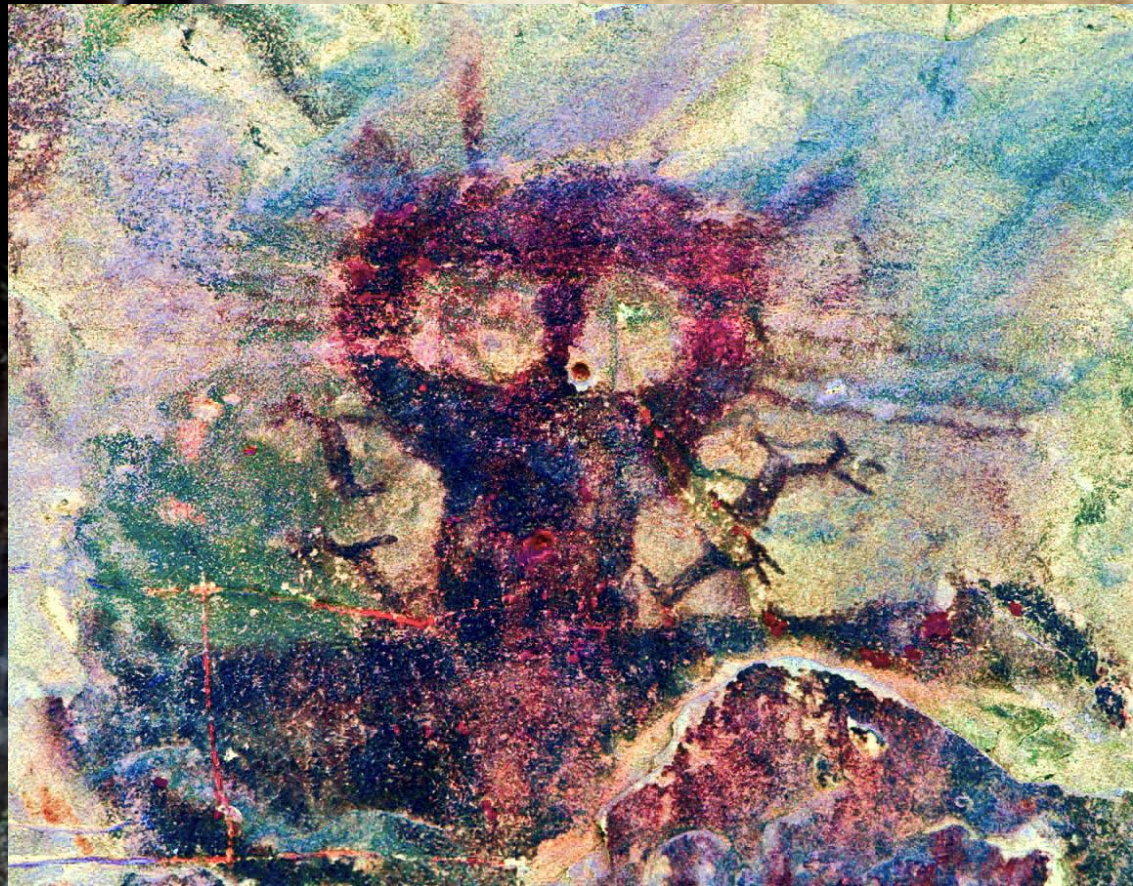
Upper wall, Great Gallery

Spirit Figures with Animal Familiars. Shaman Phase

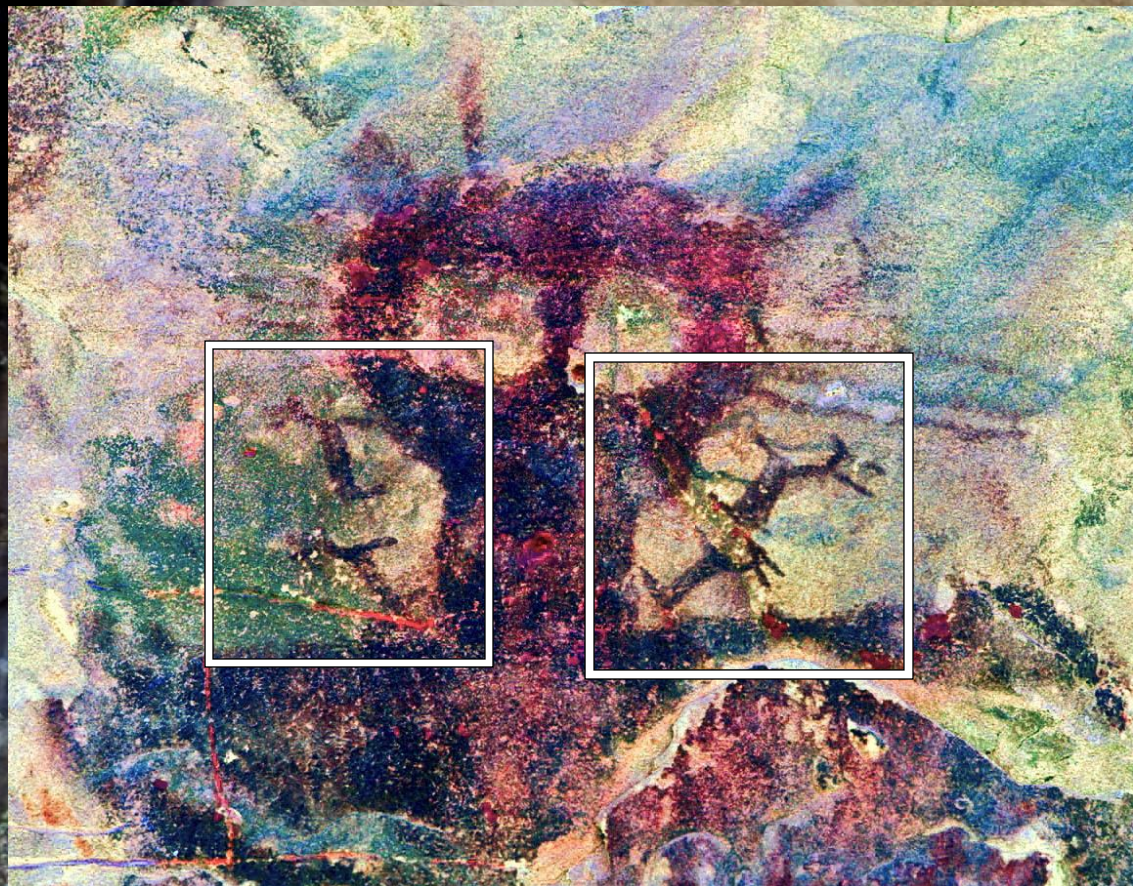


Upper wall, Great Gallery

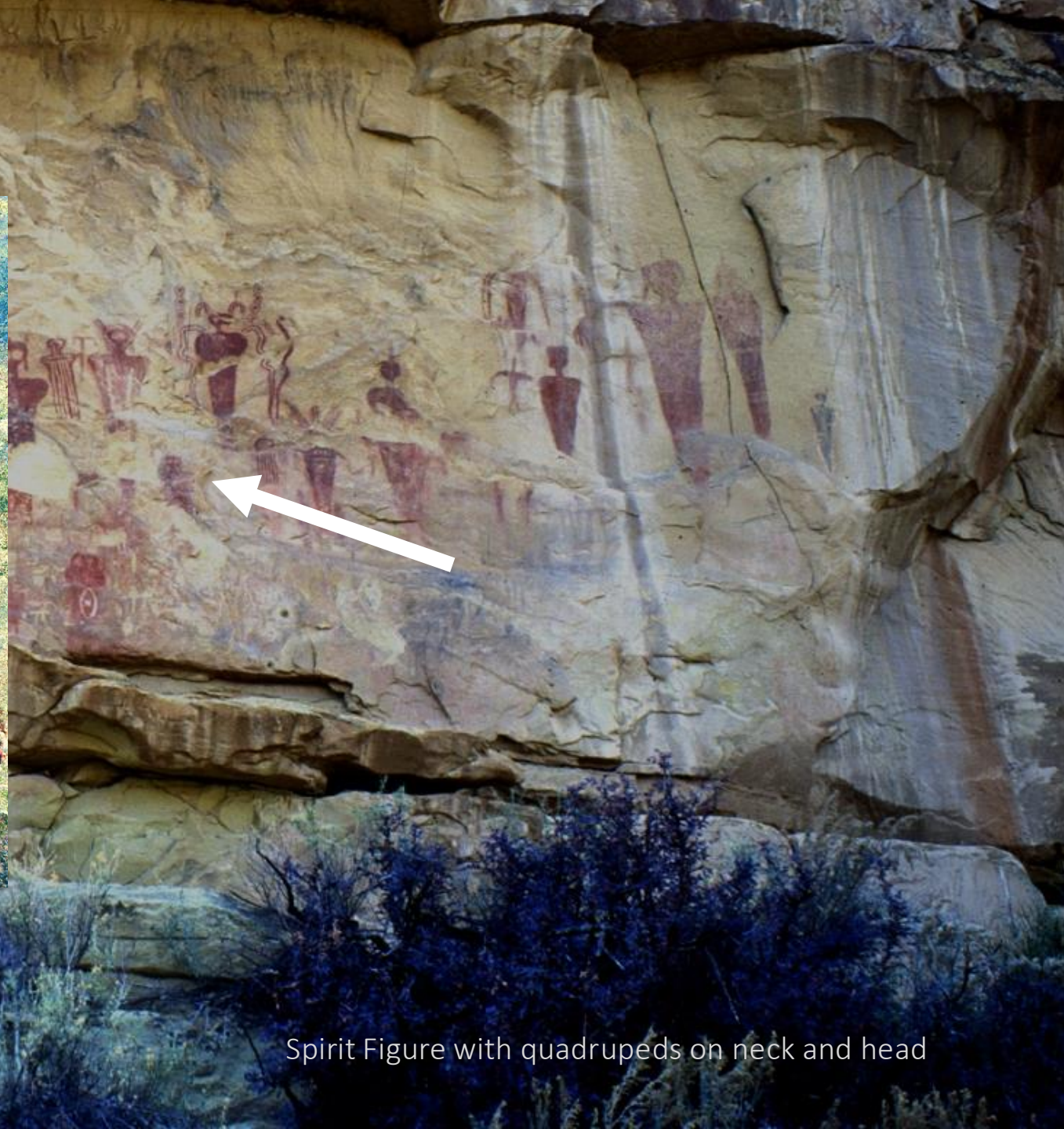
Fremont? Ute? Over-
Pecking



Compositional motif.



Compositional motif.



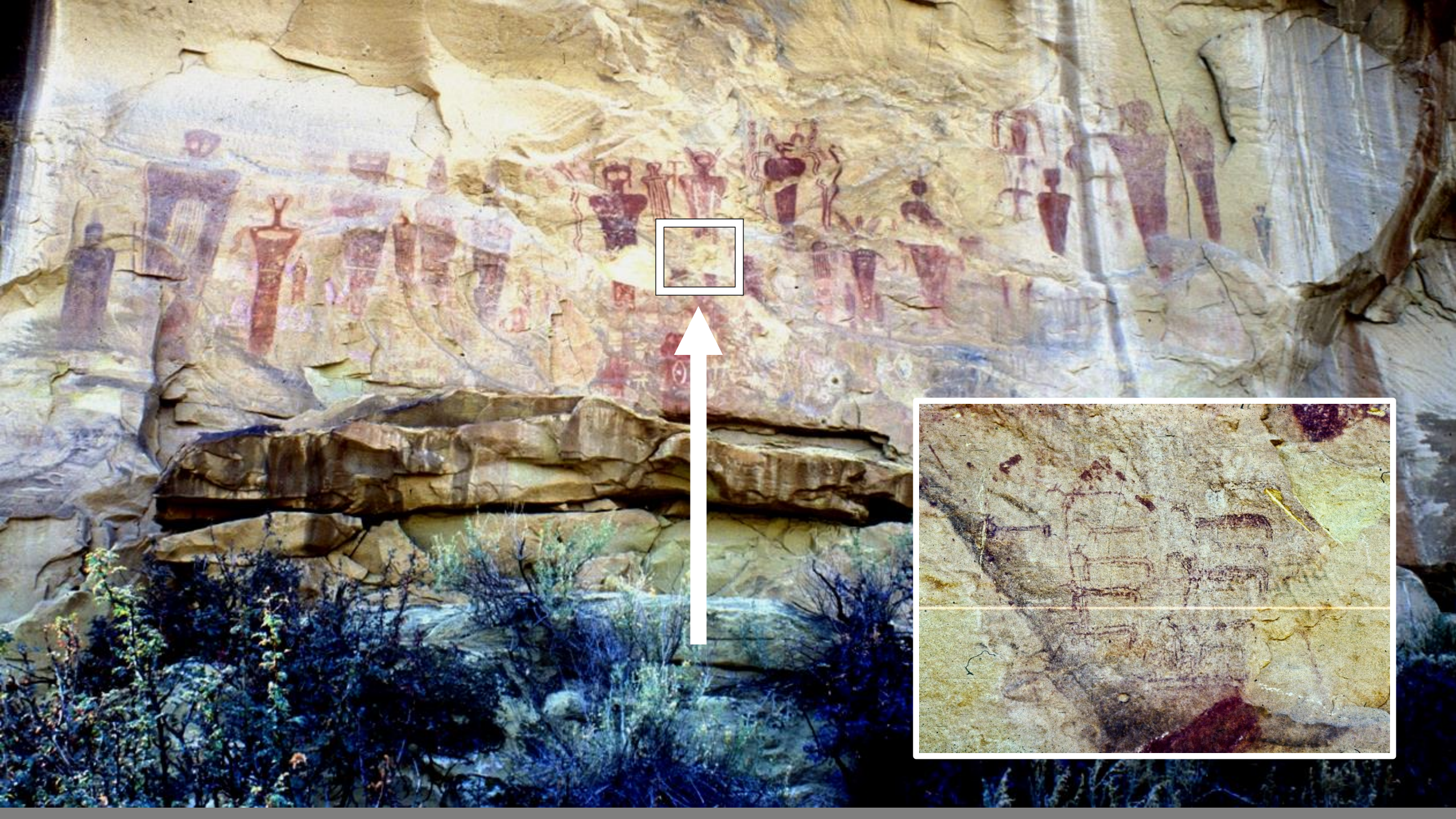
Spirit Figure with quadrupeds on neck and head



Compositional motif.



Spirit Figure with quadrupeds on neck and head

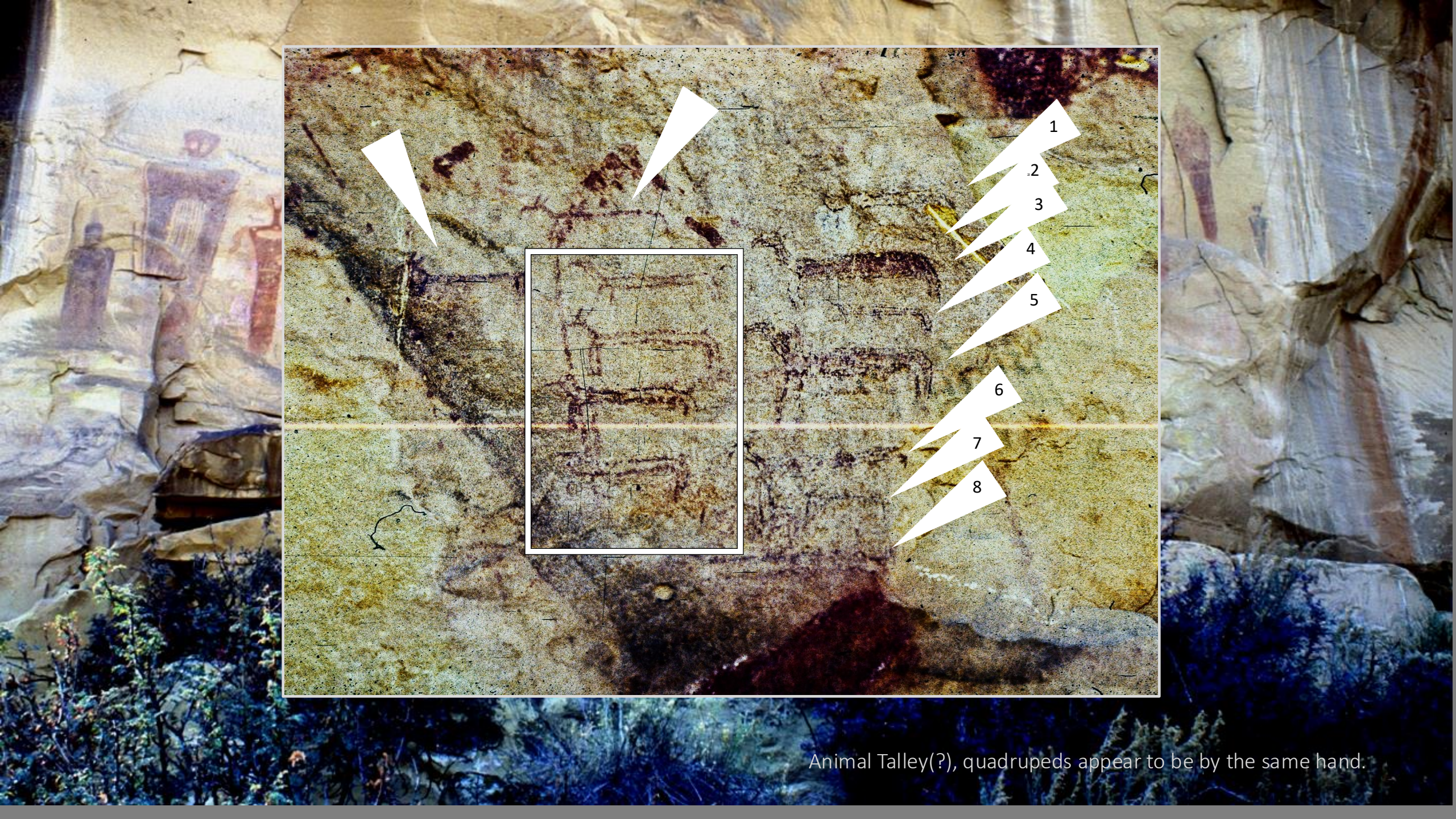




Animal Talley(?), stacked quadrupeds all facing south, down-canyon



Animal Talley(?), stacked quadrupeds all facing south, down-canyon



Animal Talley(?), quadrupeds appear to be by the same hand.



SAN RAFAEL STUDY AREA

Rochester Rock Site Main Panel
Talking With Snakes Sites



ROCHESTER ROCK SITE, San Rafael SA



ROCHESTER ROCK SITE, San Rafael SA



ROCHESTER ROCK SITE, Main Panel

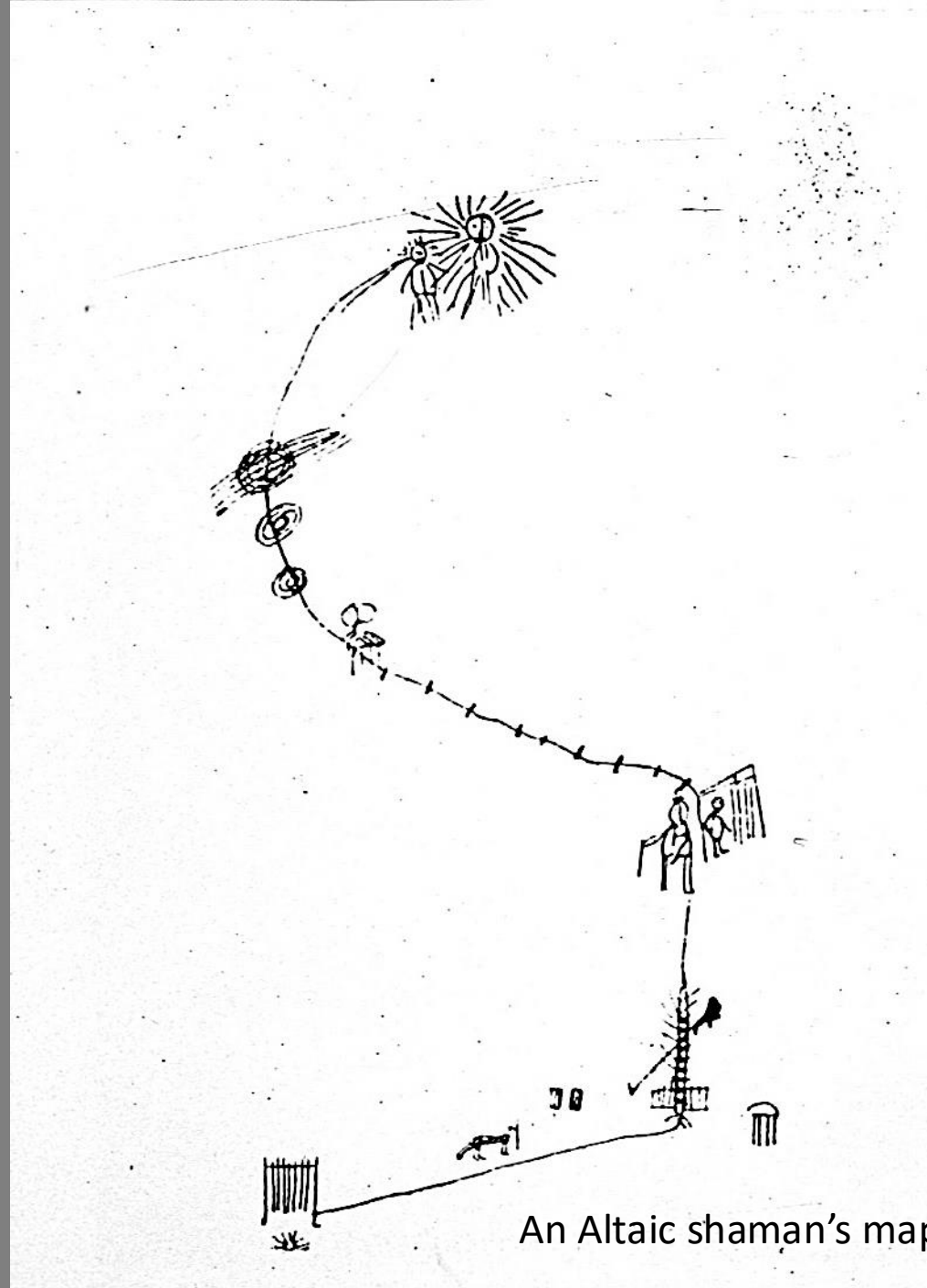


ROCHESTER MAIN PANEL, Eyed Figure

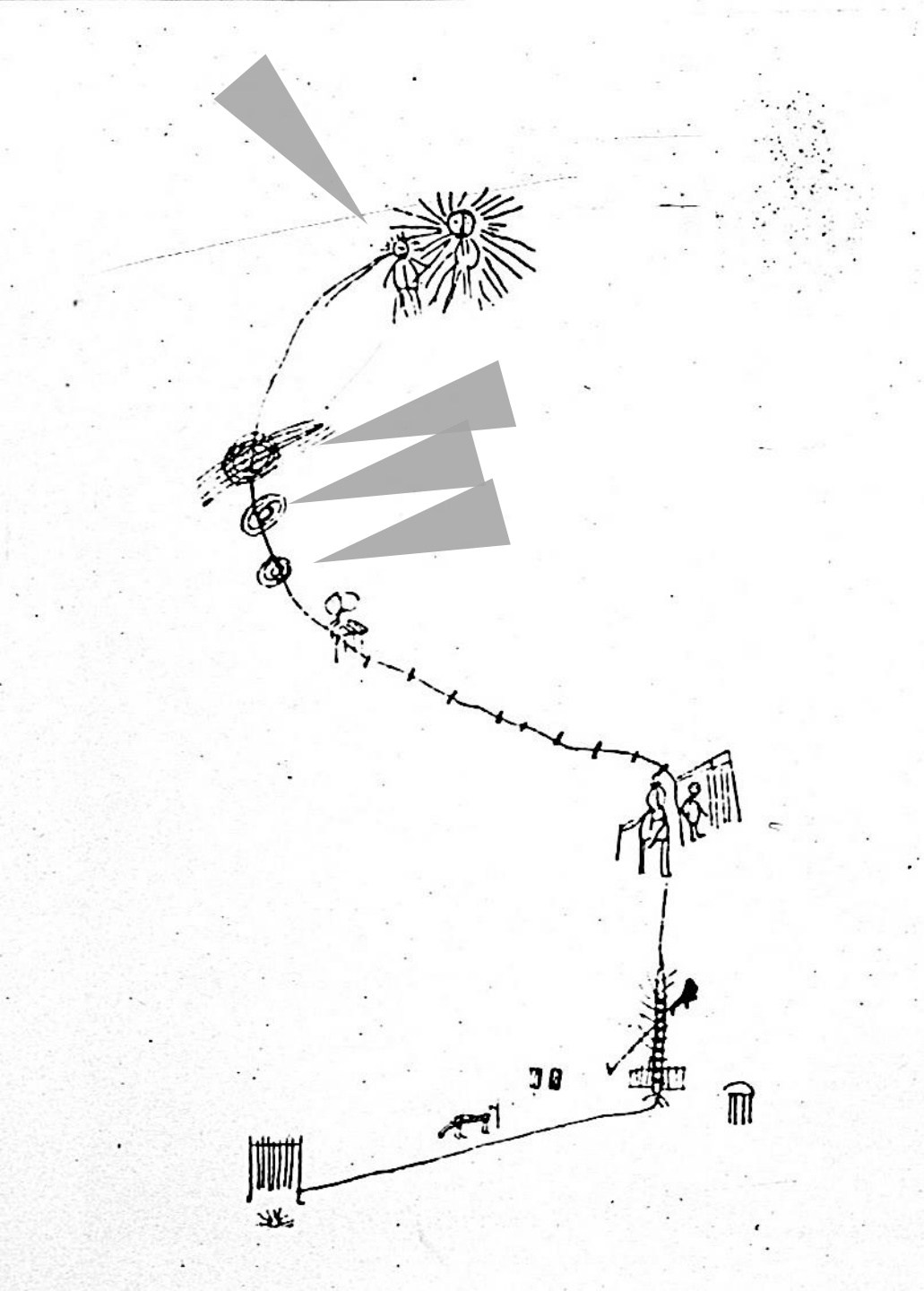


Eyed Figure: Shaman?





An Altaic shaman's map of his visionary journey.



Top: Eyed Figure = Shaman? Lower three: Shamanic Journey Events?



Shaman? And Talking Animal Spirit



Speaking Animal Spirit



Speaking Animal Spirits?



PERFECT PANEL, Canyonlands Study Area

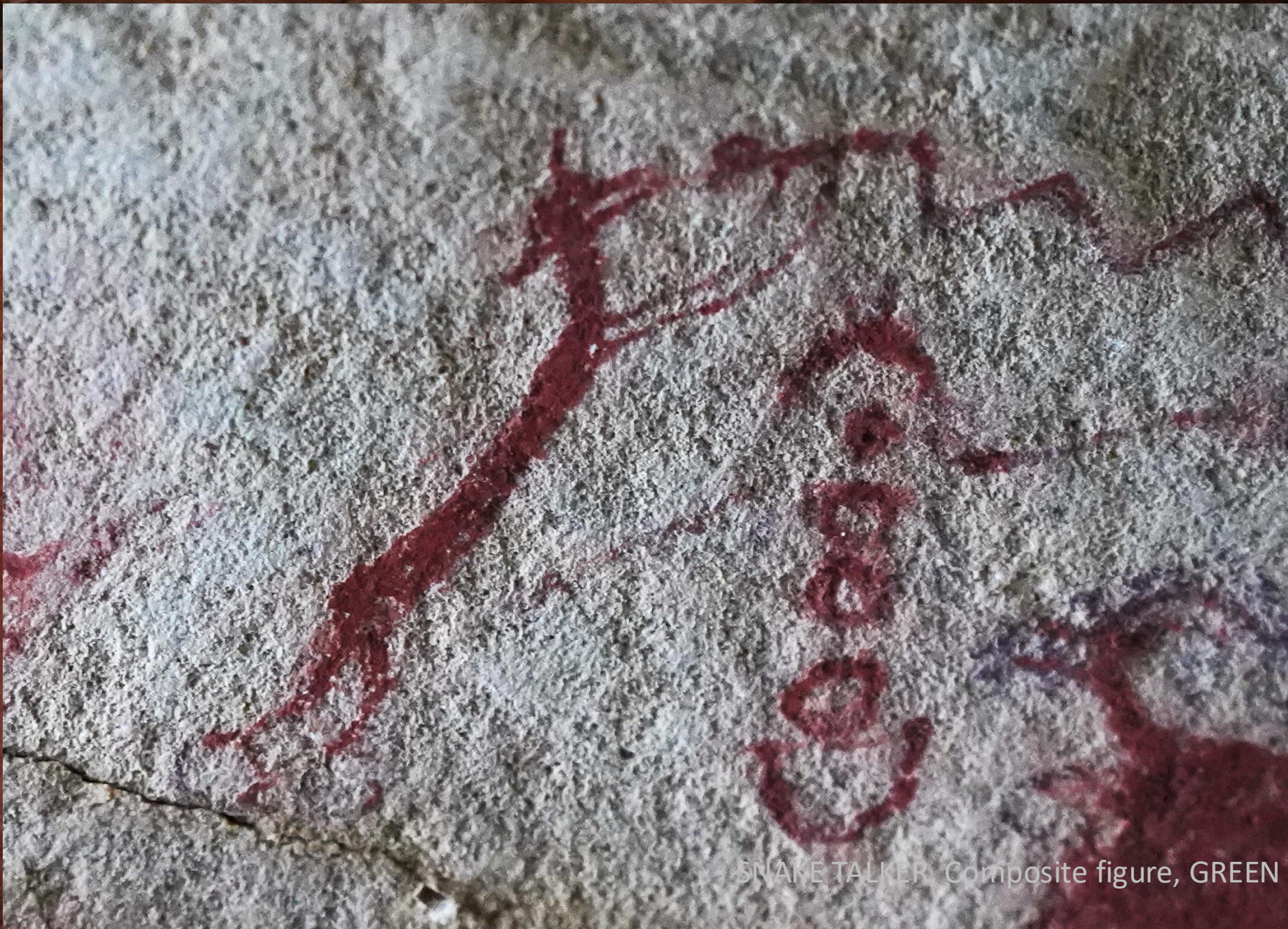




SNAKE TALKER, GREEN RIVER STUDY AREA



SNAKE TALKER, GREEN RIVER STUDY AREA



“SNAKE TALKER” Composite figure, GREEN RIVER STUDY AREA



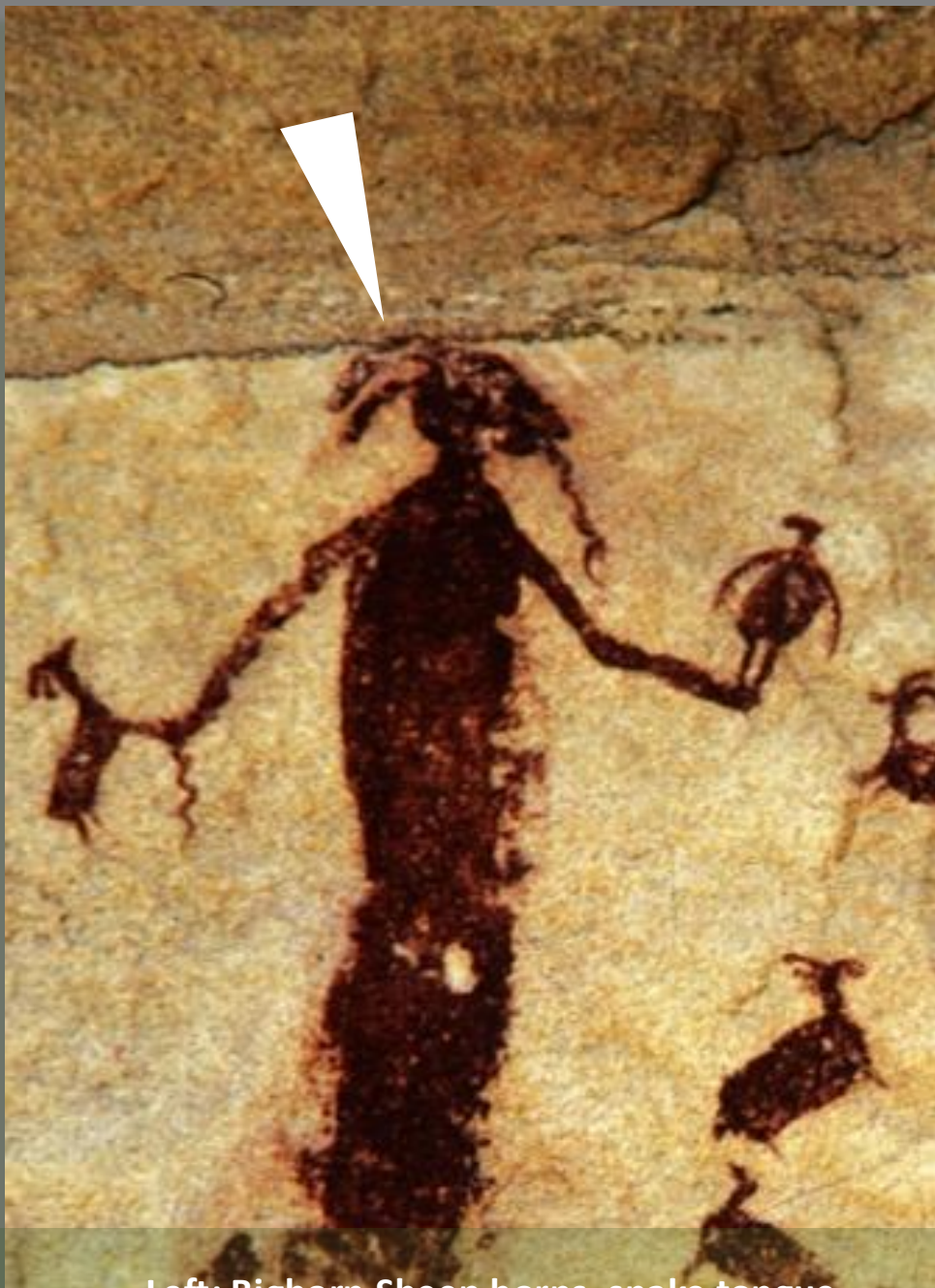


Left: Human legs. Top right: Bighorn horns?, Top middle: Animal ears.



Left: Human legs.





Left: Bighorn Sheep horns, snake tongue.

A photograph of a desert canyon. On the left, a massive, layered red rock wall rises steeply. A river flows through the center of the canyon, its water a muddy reddish-brown color. Several leafless trees are scattered along the riverbanks. In the distance, a group of people is standing on a sandy area near the river. The sky is overcast and grey. The foreground shows some dry grass and rocks.

GREEN RIVER STUDY AREA

GREAT GALLERY MOMMOTH HEADS? PANEL





MAMMOTH HEADS ?



MAMMOTH HEADS ?



2.4"

MAMMOTH HEADS ?





2.4"

MAMMOTH HEADS ?





MOST LIKELY MONMOUTH HEADS



PECKED HEADS? IMAGES PREDATED ABRADED PAINTED BCS FIGURE



GREEN RIVER STUDY AREA

HIGH ALCOVE TRANSMISSION SITE



HIGH ALCOVE, Green River Study Area



HIGH ALCOVE. Jim Farmer. GREEN RIVER STUDY AREA

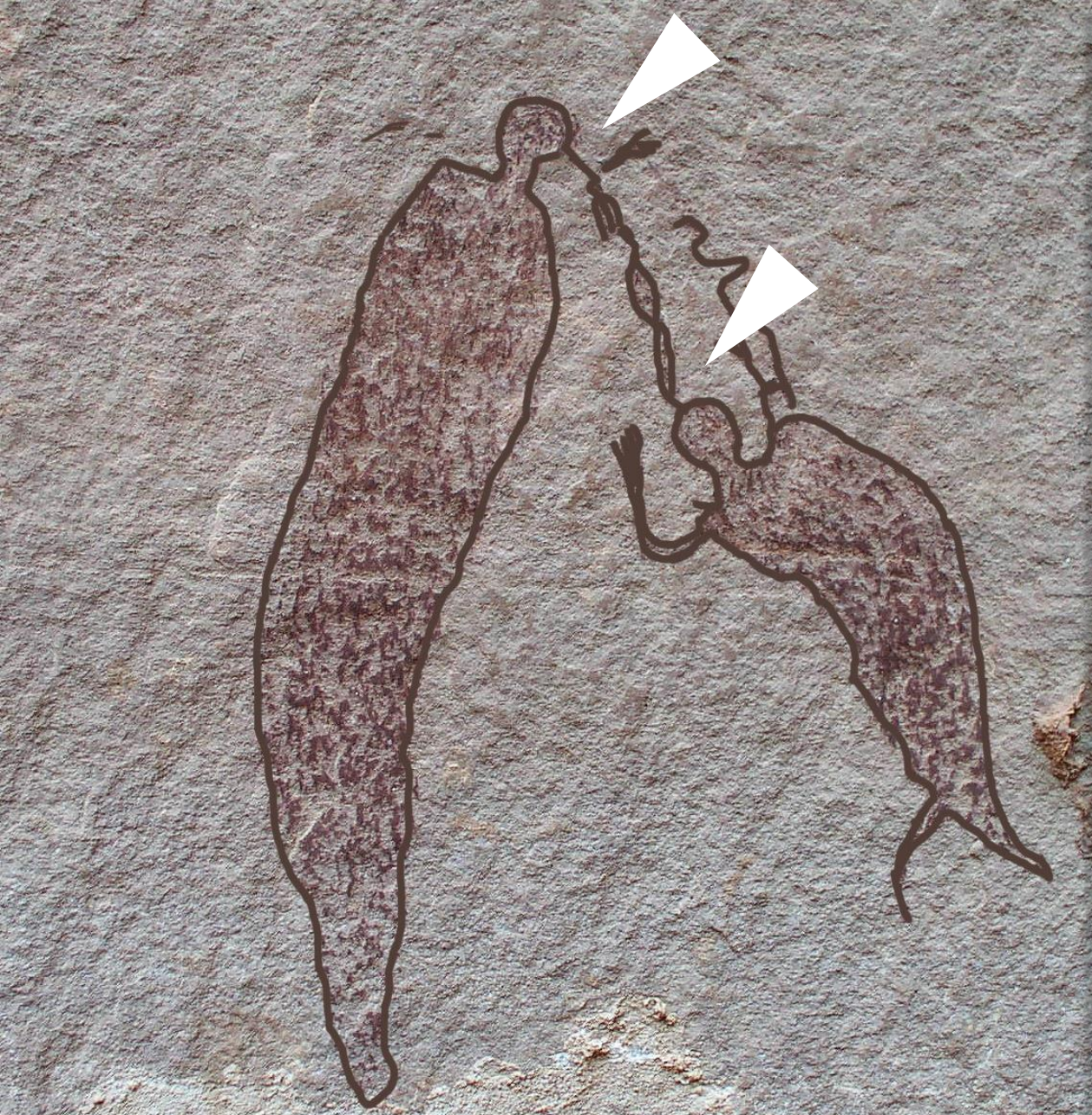


Drawn figure PLM body with bird above hand.






TRANSMISSION?, MIND TO MIND?



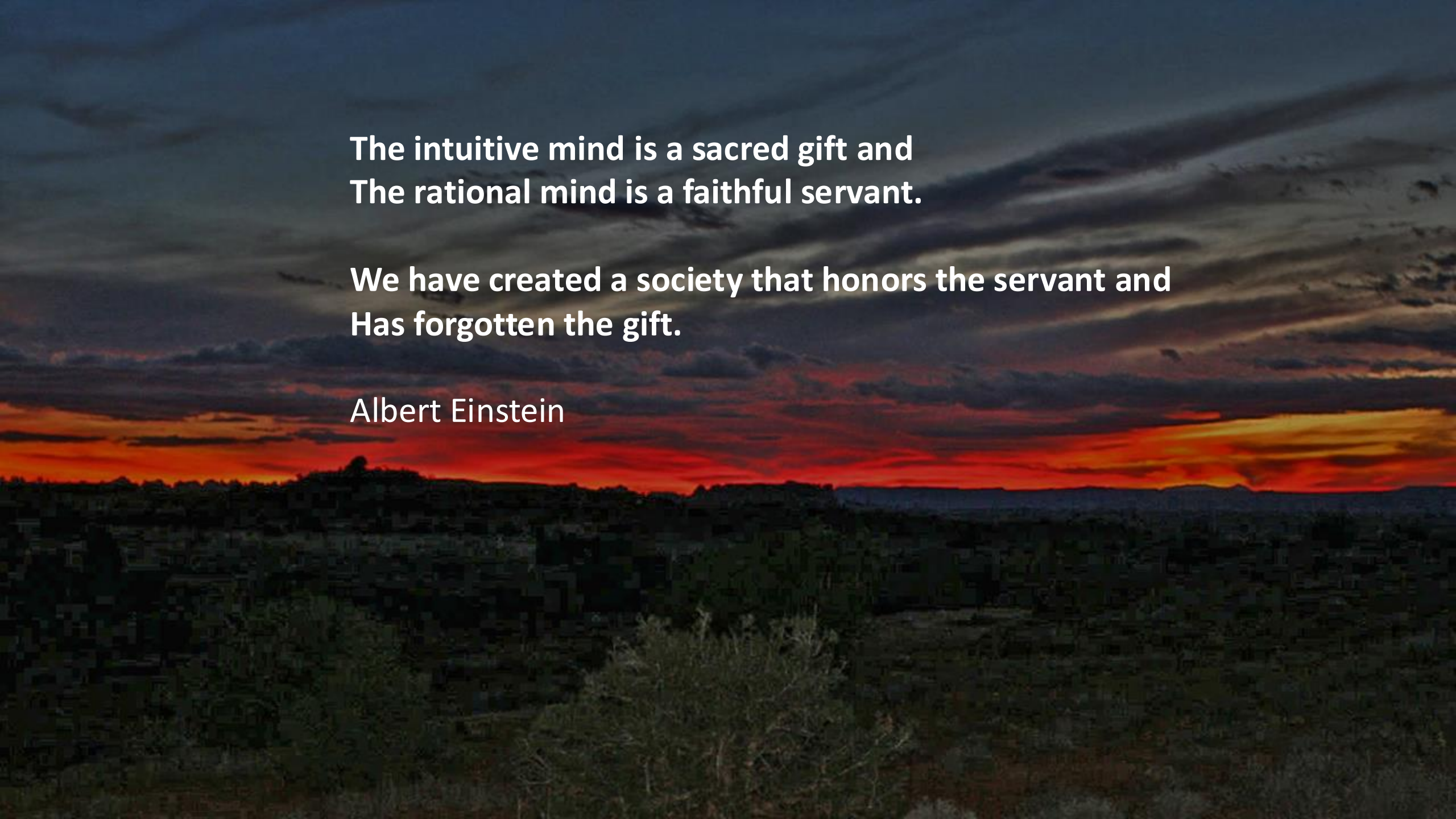
TRANSMISSION?



IMAGE MAKER CHOICES AND CULTURAL FORMS (BODY, PLM)



**Zen texts...assert that true transmission
...occurs only mind-to-mind.**



**The intuitive mind is a sacred gift and
The rational mind is a faithful servant.**

**We have created a society that honors the servant and
Has forgotten the gift.**

Albert Einstein



END