



RANCH HAND "LEONARDO"

Uintah Basin

Northern Study Area

BCS PROJECT

RANCH GATE, no longer in use


David Sucec, BCS PROJECT.

While looking for and looking at prehistoric rock art, it seems safe to say that most of us have run across pecked and scratched images by the local ranch hands (aka, *Cowboy Glyphs*)...too often they are superimposed on prehistoric rock art panels.

The ranch hand images that I've seen, in situ and in reproductions, exhibit representational and execution skills that are usually barely adequate, at best... especially when compared to the work of many of the prehistoric image-makers that I was seeing.

However, during the BCS PROJECT's 2022 autumn field session in our Northern Study Area, we found a cluster of rock art panels with ranch hand images that were more than adequate...in fact, they were the finest ranch hand images that I have seen during my many canyon hikes.

Several of the images appear to be of a specific cowboy and I found parallels with the work of Leonardo da Vinci, the 16th-century "Renaissance Man."

The background image shows a rural landscape with several large, gnarled trees in the foreground and middle ground. A wooden fence runs across the scene, and a dirt path or road is visible. The background features rolling hills and a forested area under a clear sky. The entire image is covered with a dark, semi-transparent overlay.

RANCH HAND “LEONARDO”

> INTRODUCTION

The background image shows a rural landscape with several large, gnarled trees in the foreground and middle ground. A wooden fence runs across the scene, and a dirt path or road is visible. The background features rolling hills and a clear sky. The entire image is covered with a dark, semi-transparent overlay, which serves as a backdrop for the white text.

RANCH HAND “LEONARDO”

> INTRODUCTION

> PORTRAITS

**SPECIFIC INDIVIDUAL
STANDING FIGURE
RUNNING HORSES/RIDERS.**



RANCH HAND “LEONARDO”

> INTRODUCTION

> PORTRAITS

**SPECIFIC INDIVIDUAL
STANDING FIGURE
RUNNING HORSE/RIDER**

**> REARING HORSE PANEL,
LEONARDO REFERENCE
INDIAN HEAD PROFILE**



RANCH HAND “LEONARDO”

> INTRODUCTION

> PORTRAITS

**SPECIFIC INDIVIDUAL
STANDING FIGURE
RUNNING HORSE/RIDER.**

**> REARING HORSE PANEL,
LEONARDO REFERENCE
INDIAN HEAD PROFILE**

> WORDS, NAMES, AND BRANDS

IT IS IMPORTANT TO ACKNOWLEDGE EXCELLENCE

**IT IS IMPORTANT TO ACKNOWLEDGE EXCELLENCE
IN IMAGE-MAKING, WHEN WE SEE IT**

**IT IS IMPORTANT TO ACKNOWLEDGE EXCELLENCE
IN IMAGE-MAKING, WHEN WE SEE IT
ON THE CANYON WALLS—PREHISTORIC**

**IT IS IMPORTANT TO ACKNOWLEDGE EXCELLENCE
IN IMAGE-MAKING, WHEN WE SEE IT
ON THE CANYON WALLS—PREHISTORIC
OR HISTORIC.**

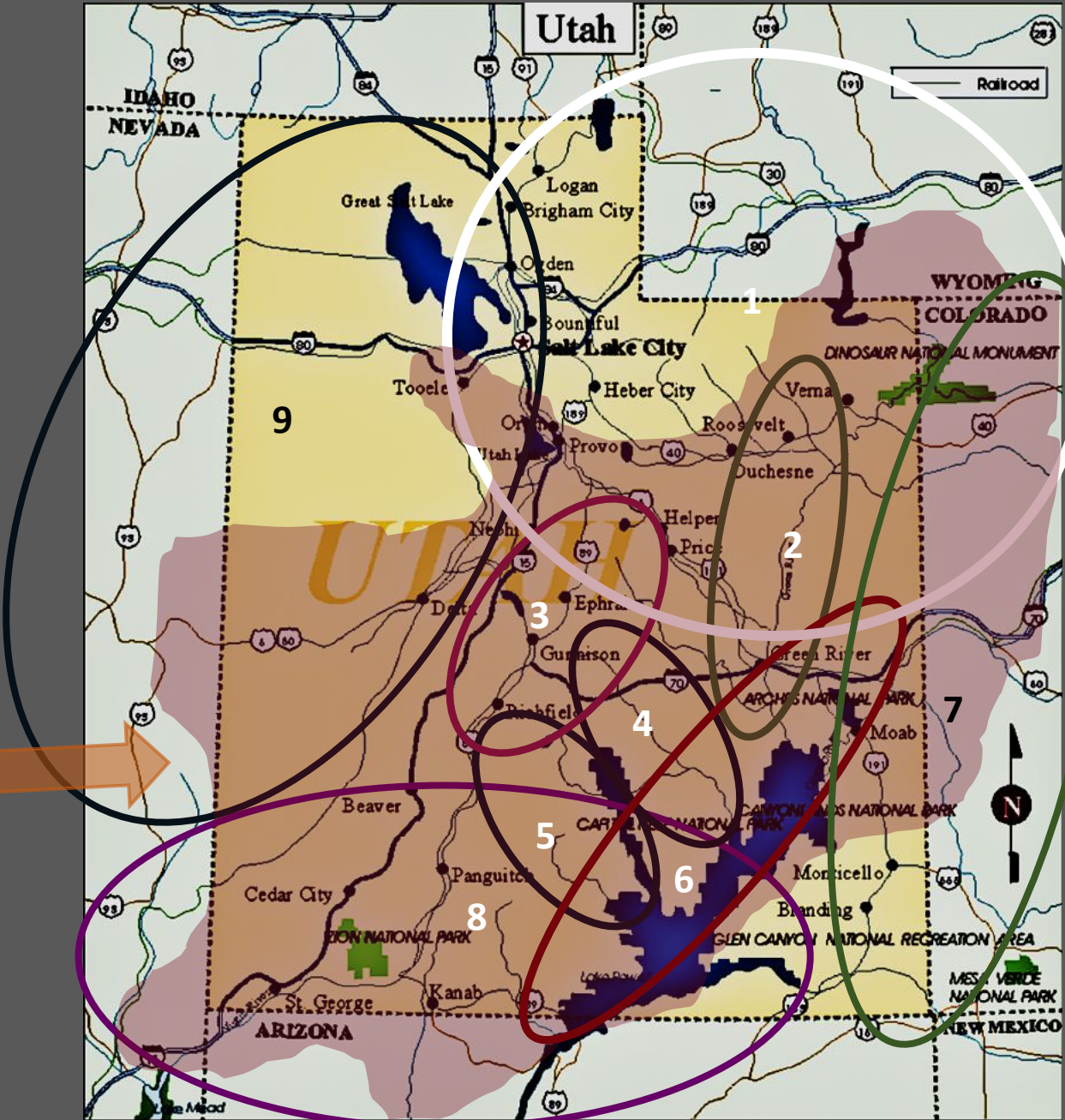


**RANCH HAND "LEONARDO"
LOCATION**

RANCH GATE, no longer in use

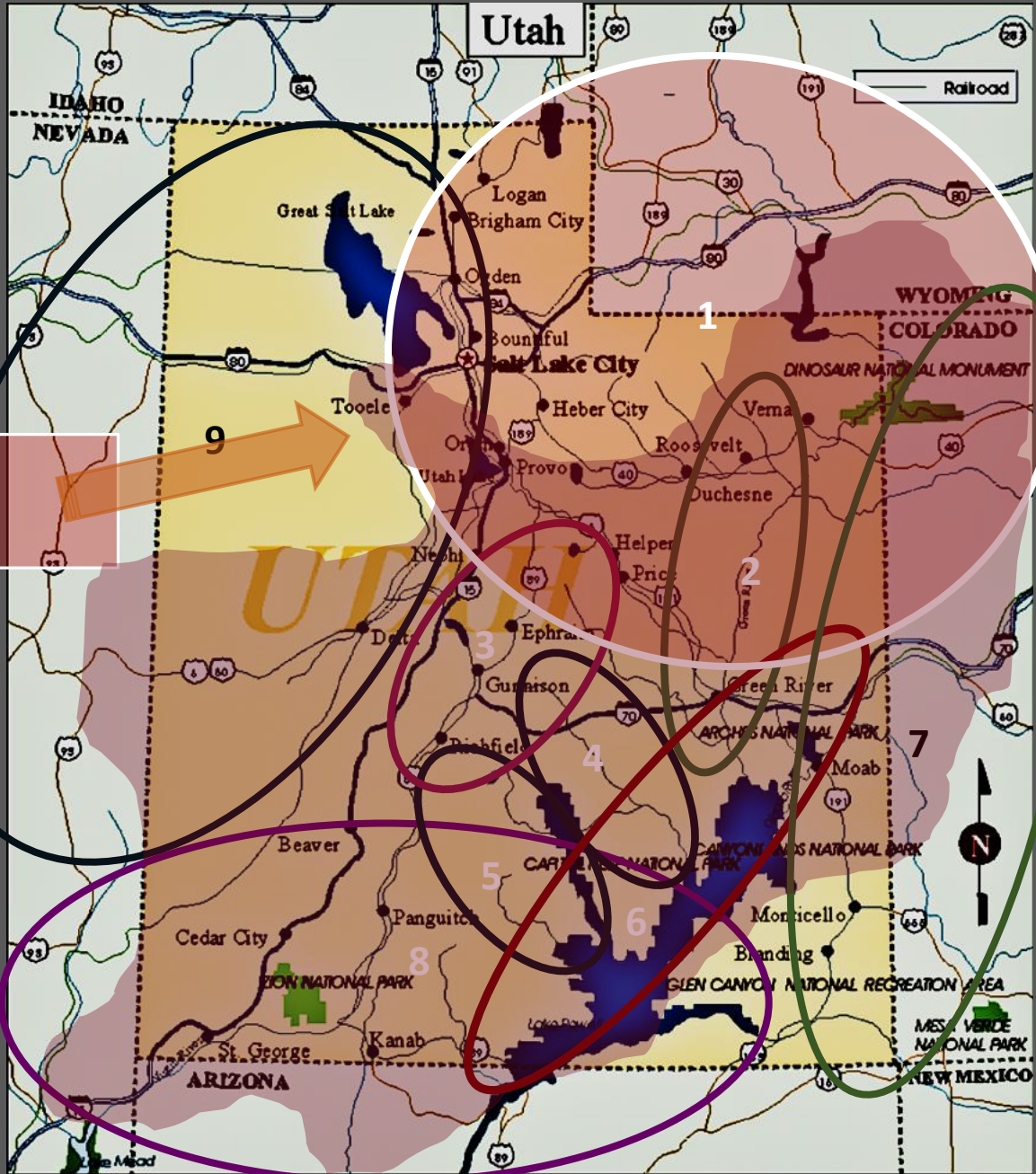
David Sucec, BCS PROJECT.

Large Red Form indicates areas where we have found figures in the Barrier Canyon style.



BCS PROJECT
Primary Study Areas (2023)

1. Northern Study Area.
2. Green River Study Area.
3. San Rafael Study Area.
4. Dirty Devil Study Area.
5. Escalante Study Area (Grand Staircase/Escalante National Monument, Glen Canyon National Recreation Area).
6. Canyonlands Study Area (Glen Canyon National Recreation Area and Canyonlands National Park).
7. Eastern Study Area.
8. Southern Study Area.
9. Western Study Area (eastern Great Basin)

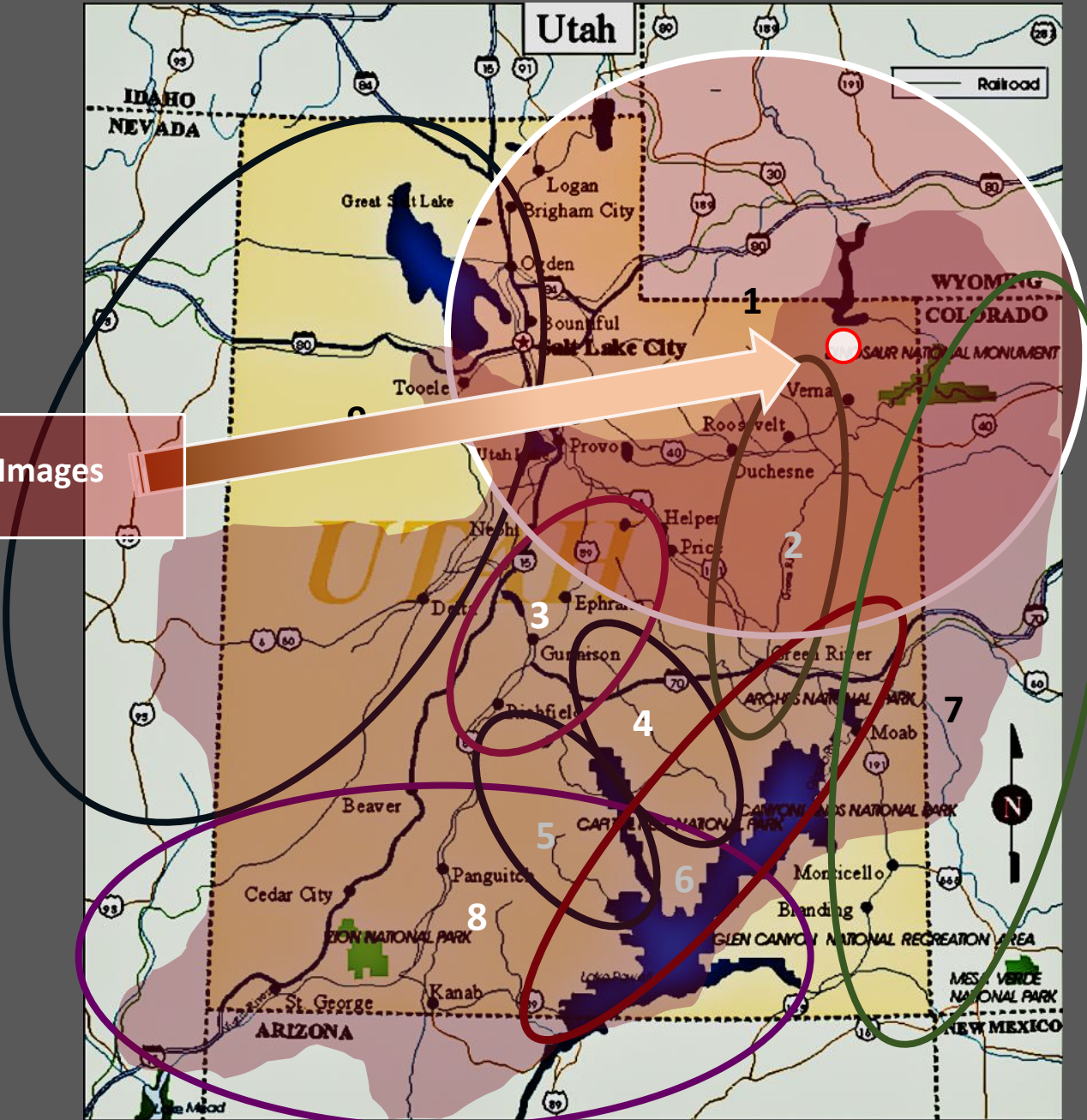


Northern Study Area

BCS PROJECT
Primary Study Areas (2023)

1. Northern Study Area.
2. Green River Study Area.
3. San Rafael Study Area.
4. Dirty Devil Study Area.
5. Escalante Study Area (Grand Staircase/Escalante National Monument, Glen Canyon National Recreation Area).
6. Canyonlands Study Area (Glen Canyon National Recreation Area and Canyonlands National Park).
7. Eastern Study Area.
8. Southern Study Area.
9. Western Study Area (eastern Great Basin)

Ranch Hand Images




BCS PROJECT
Primary Study Areas (2023)

1. Northern Study Area.
2. Green River Study Area.
3. San Rafael Study Area.
4. Dirty Devil Study Area.
5. Escalante Study Area (Grand Staircase/Escalante National Monument, Glen Canyon National Recreation Area).
6. Canyonlands Study Area (Glen Canyon National Recreation Area and Canyonlands National Park).
7. Eastern Study Area.
8. Southern Study Area.
9. Western Study Area (eastern Great Basin)



ABANDONED RANCH HOUSE
CRAIG LAW, PROJ PHOTOGRAPHER



**RANCH HAND “LEONARDO”
STANDING FIGURE
PORTRAITS (SELF?)**

RANCH GATE, no longer in use

David Sucec, BCS PROJECT.



RANCH HAND SITE FOUR

STANDING FIGURE



RANCH HAND SITE FOUR STANDING FIGURE



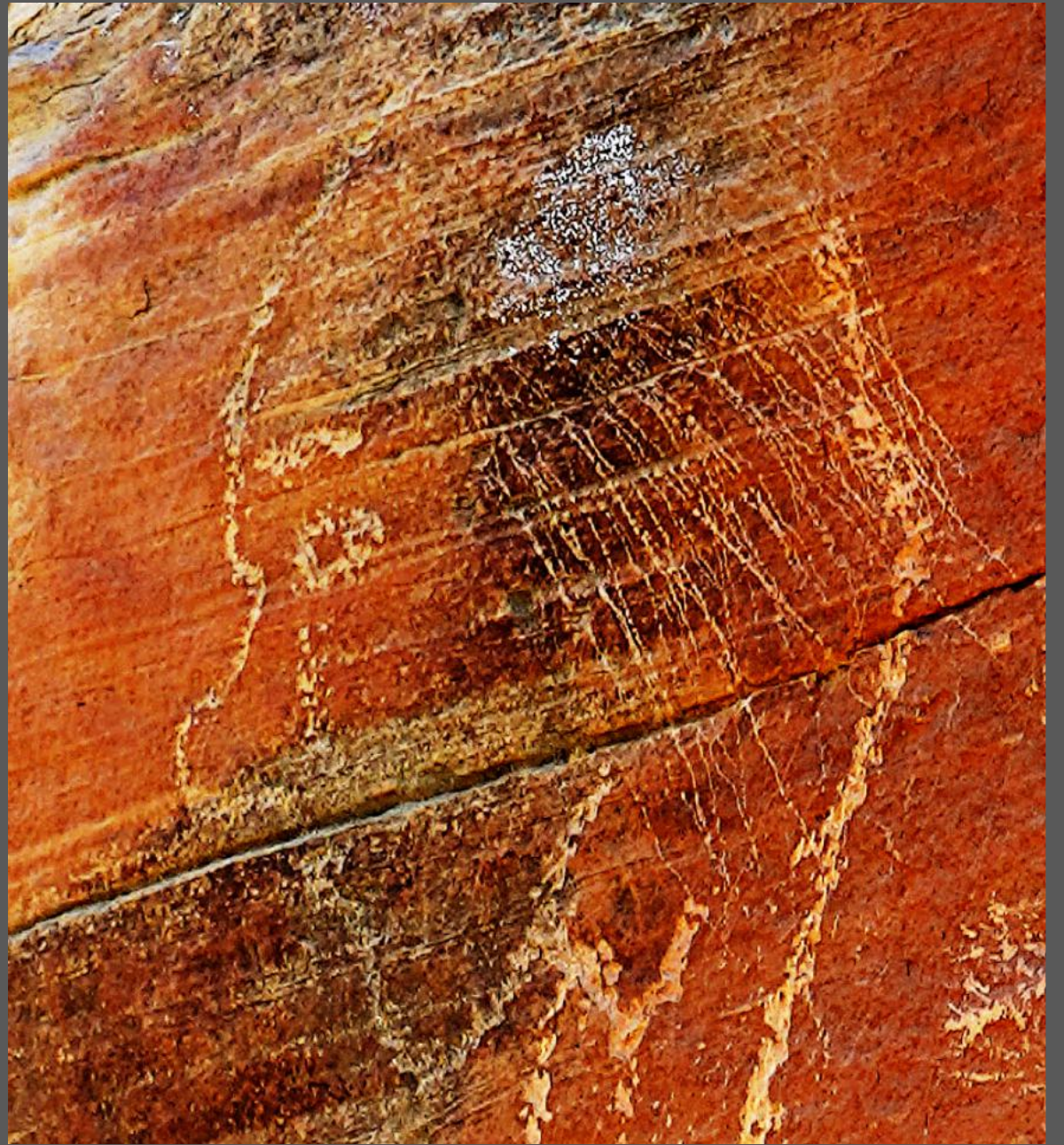
Contrast enhanced



STANDING FIGURE



ANGLE SHOT



BALD TOP OF HEAD

EYEBROW LINE

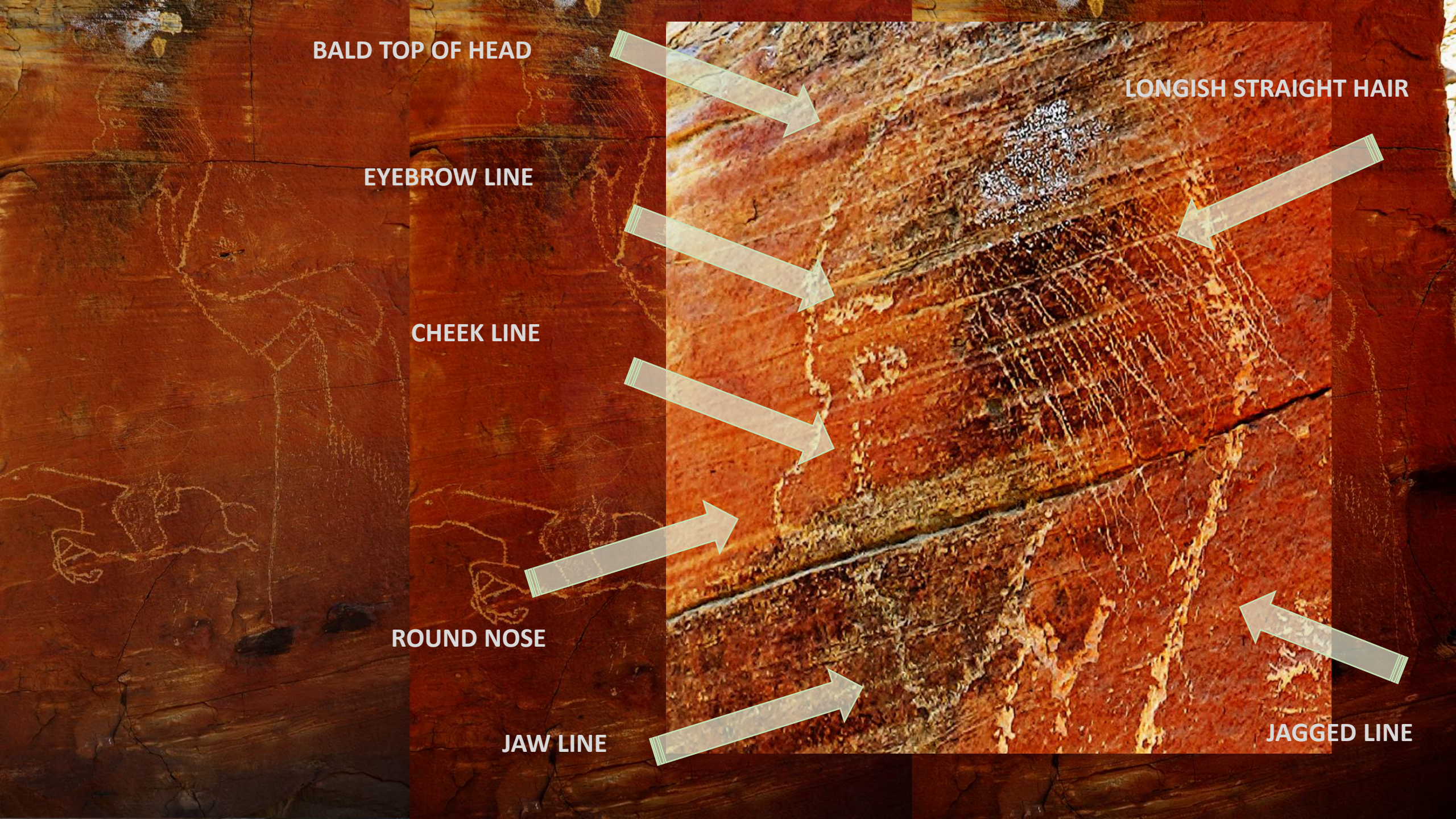
CHEEK LINE

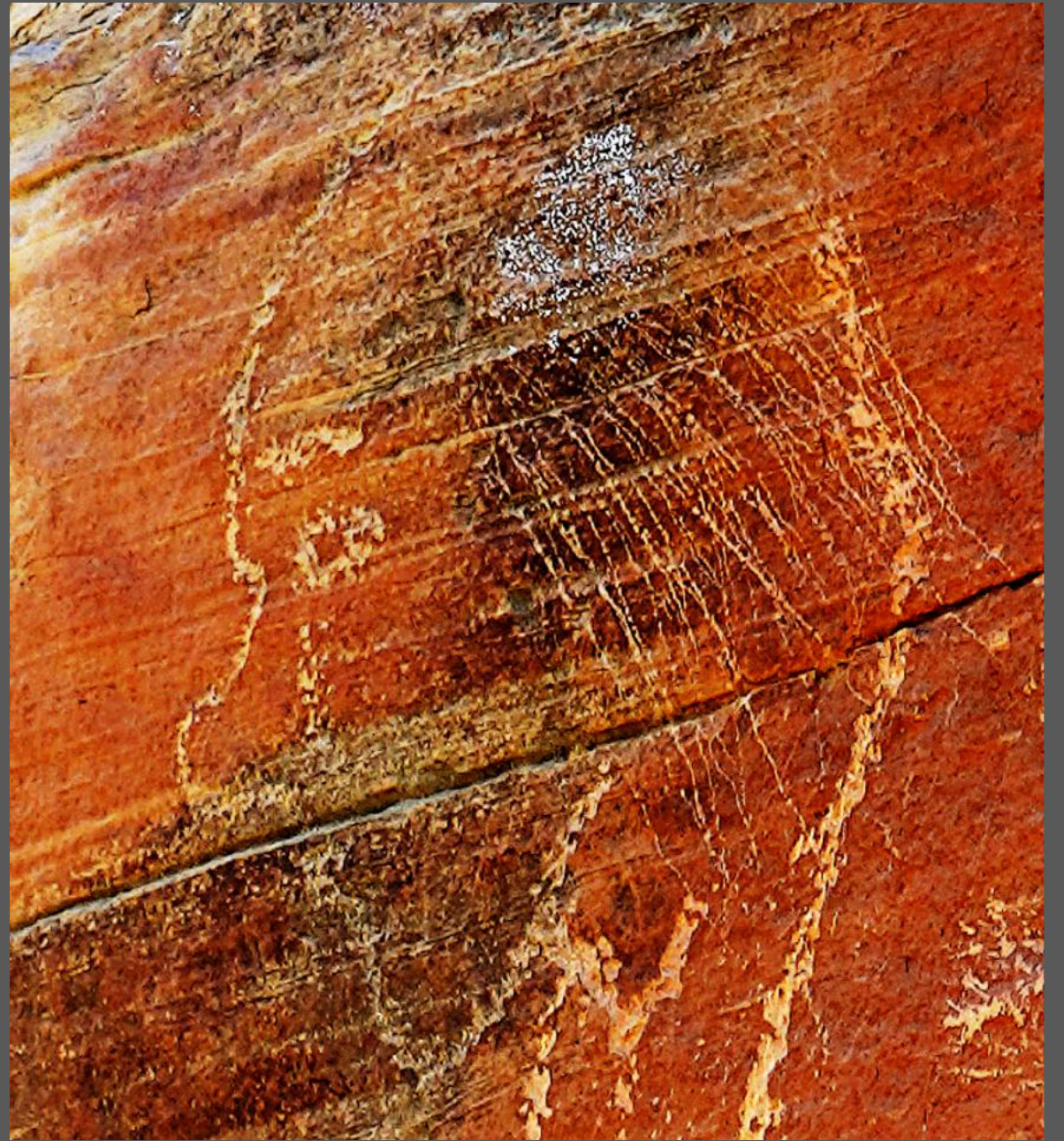
ROUND NOSE

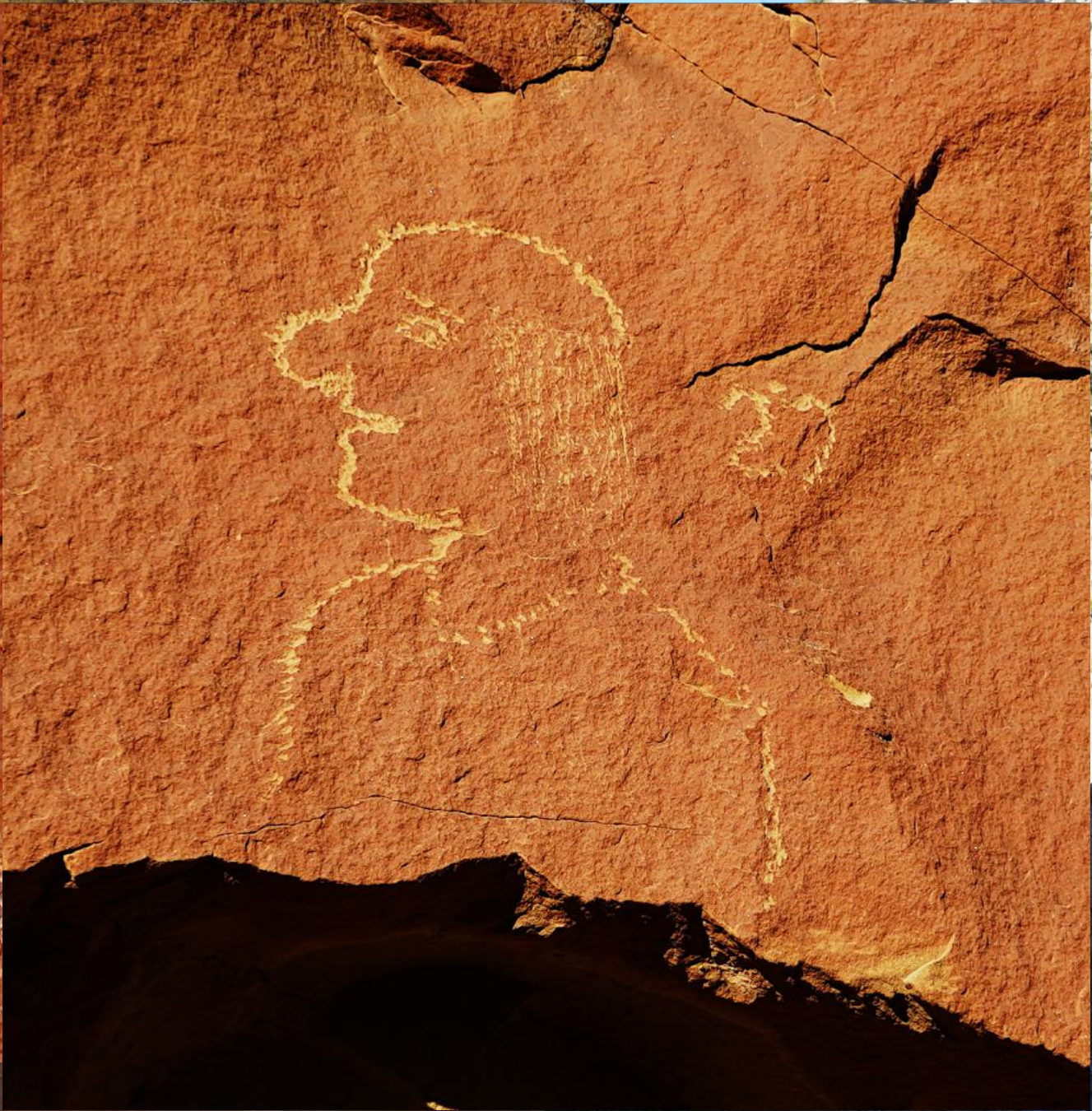
JAW LINE

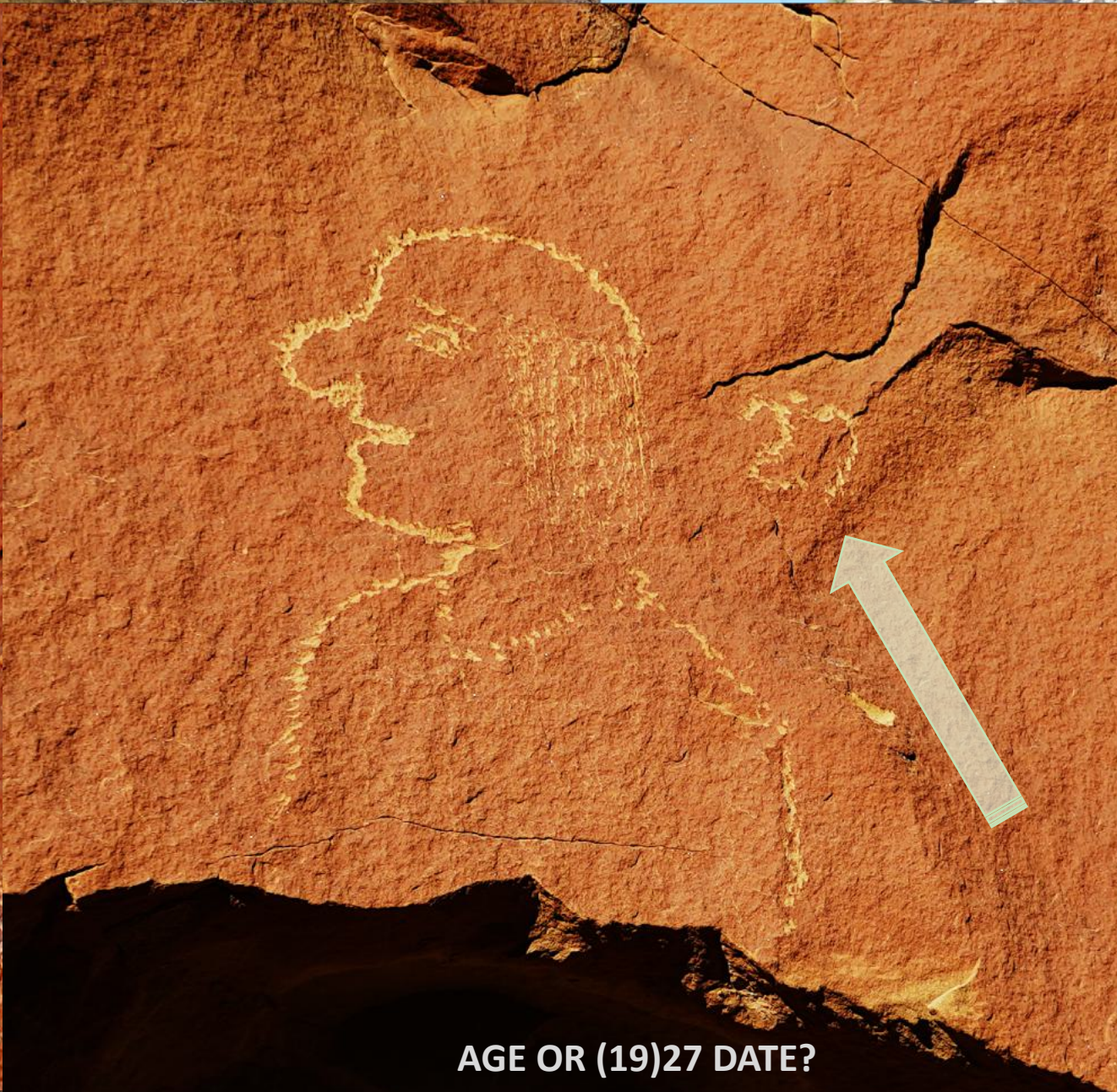
LONGISH STRAIGHT HAIR

JAGGED LINE

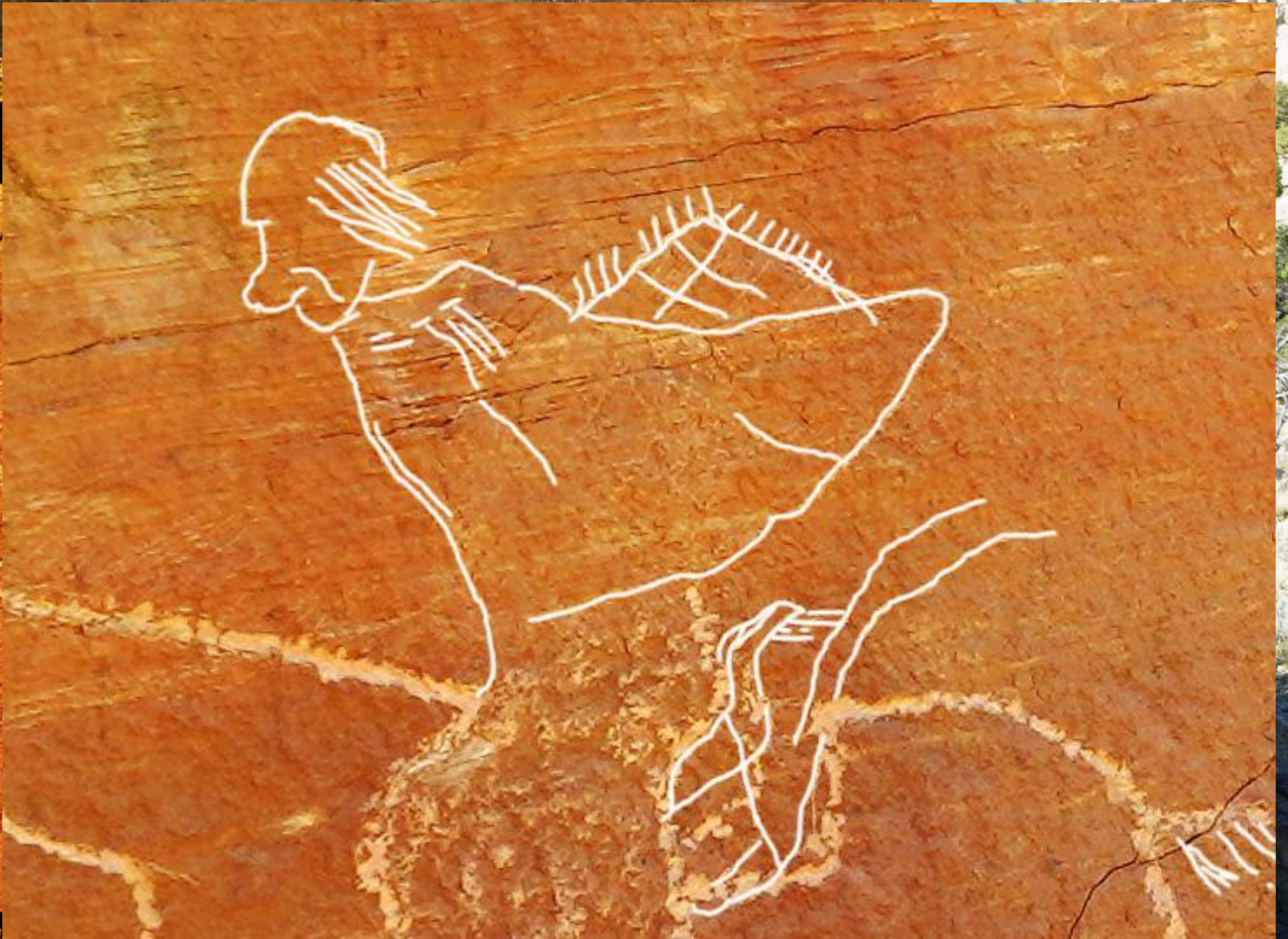
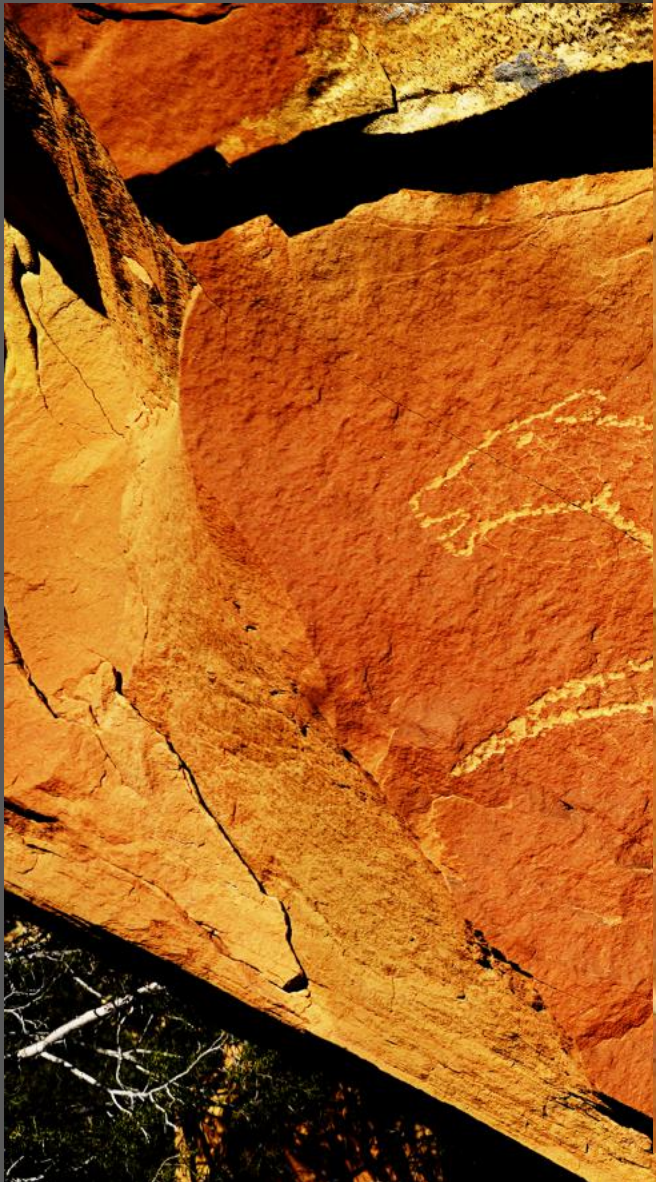








AGE OR (19)27 DATE?





Horse/Rider Three


Contrast enhanced

TORSO POSITION



chisel marks






**RANCH HAND "LEONARDO"
HORSE AND RIDER**

RANCH GATE, no longer in use

David Sucec, BCS PROJECT.





RUNNING HORSE/RIDER, NEAR STANDING FIGURE.

Contrast enhanced

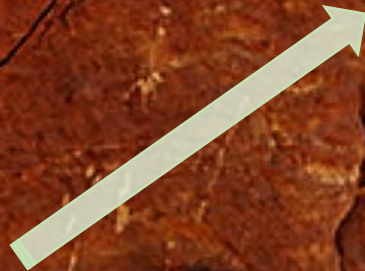
HORSE'S EAR BACK



FURRY CHAPS



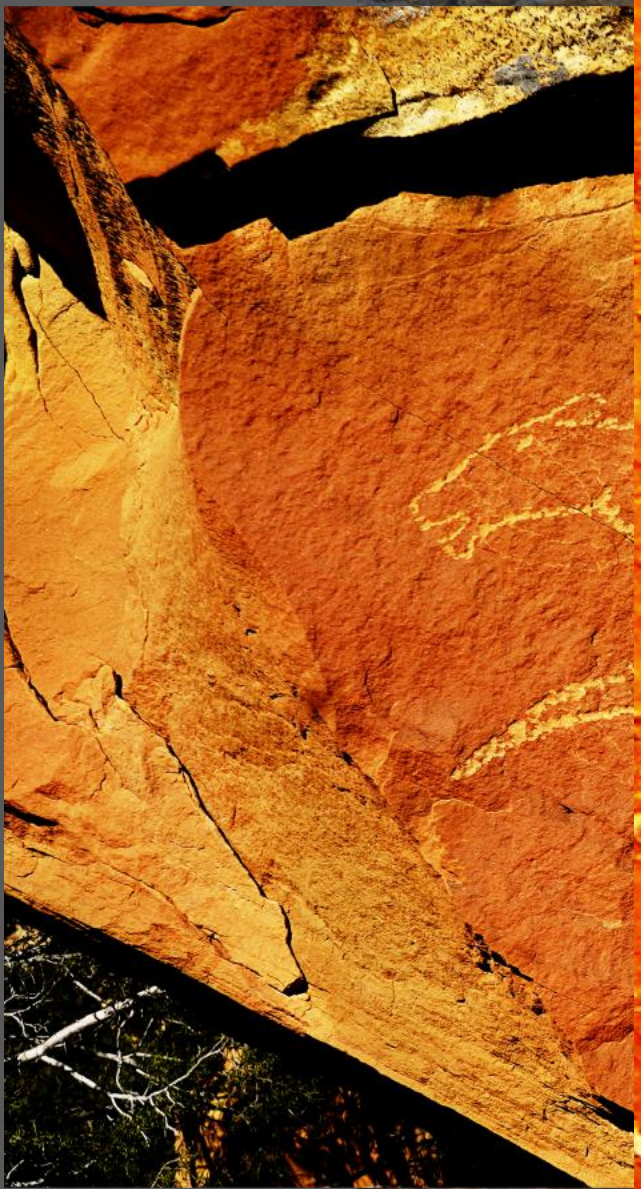
REAR LEGS SHORTENED

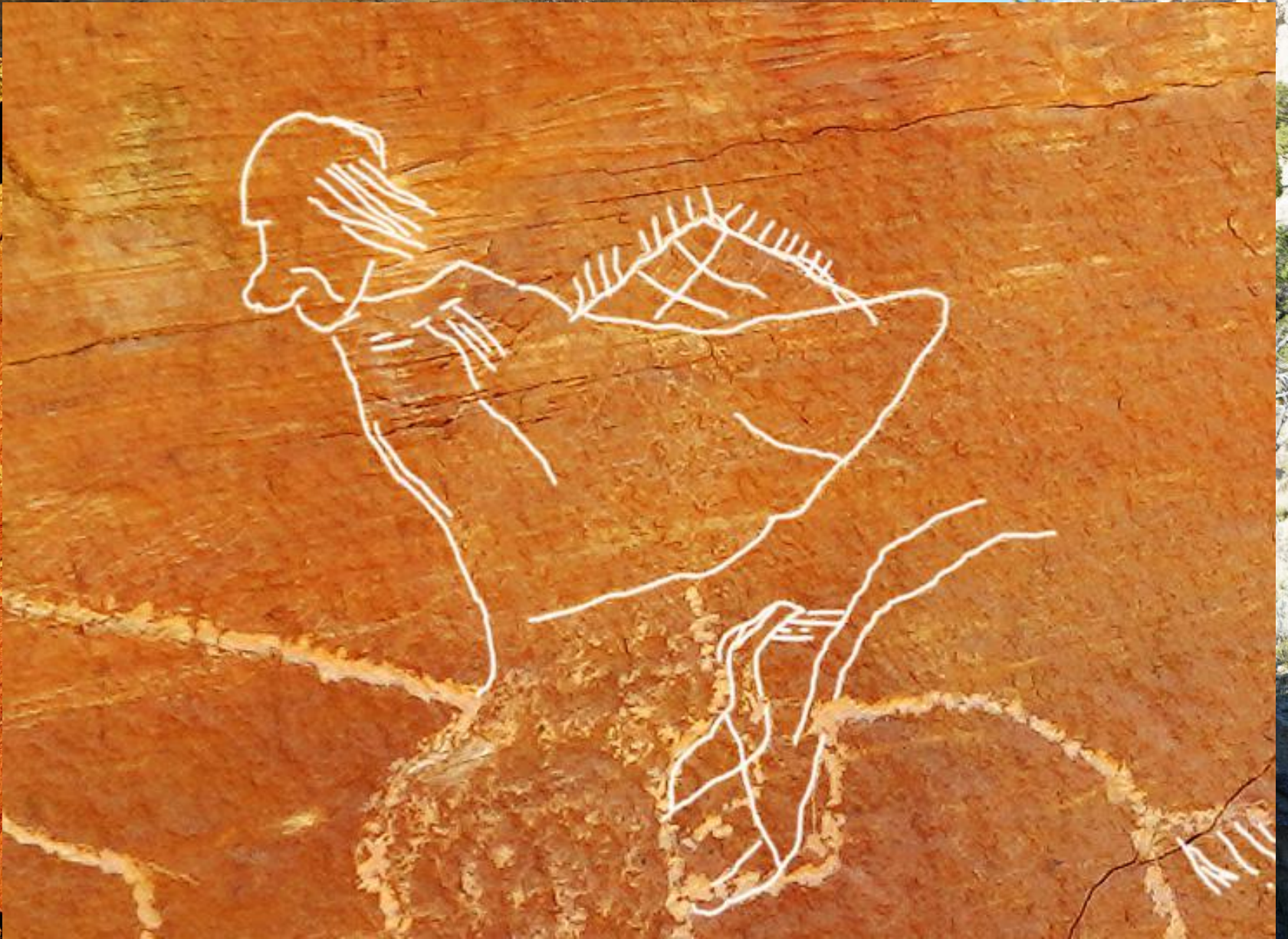
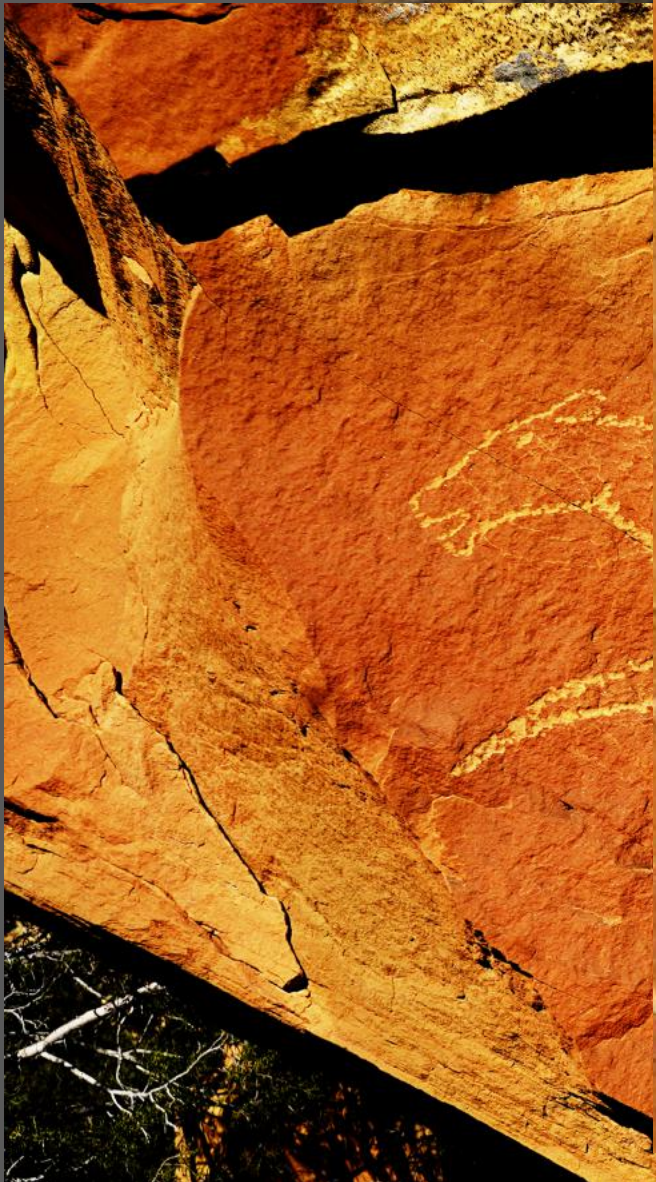


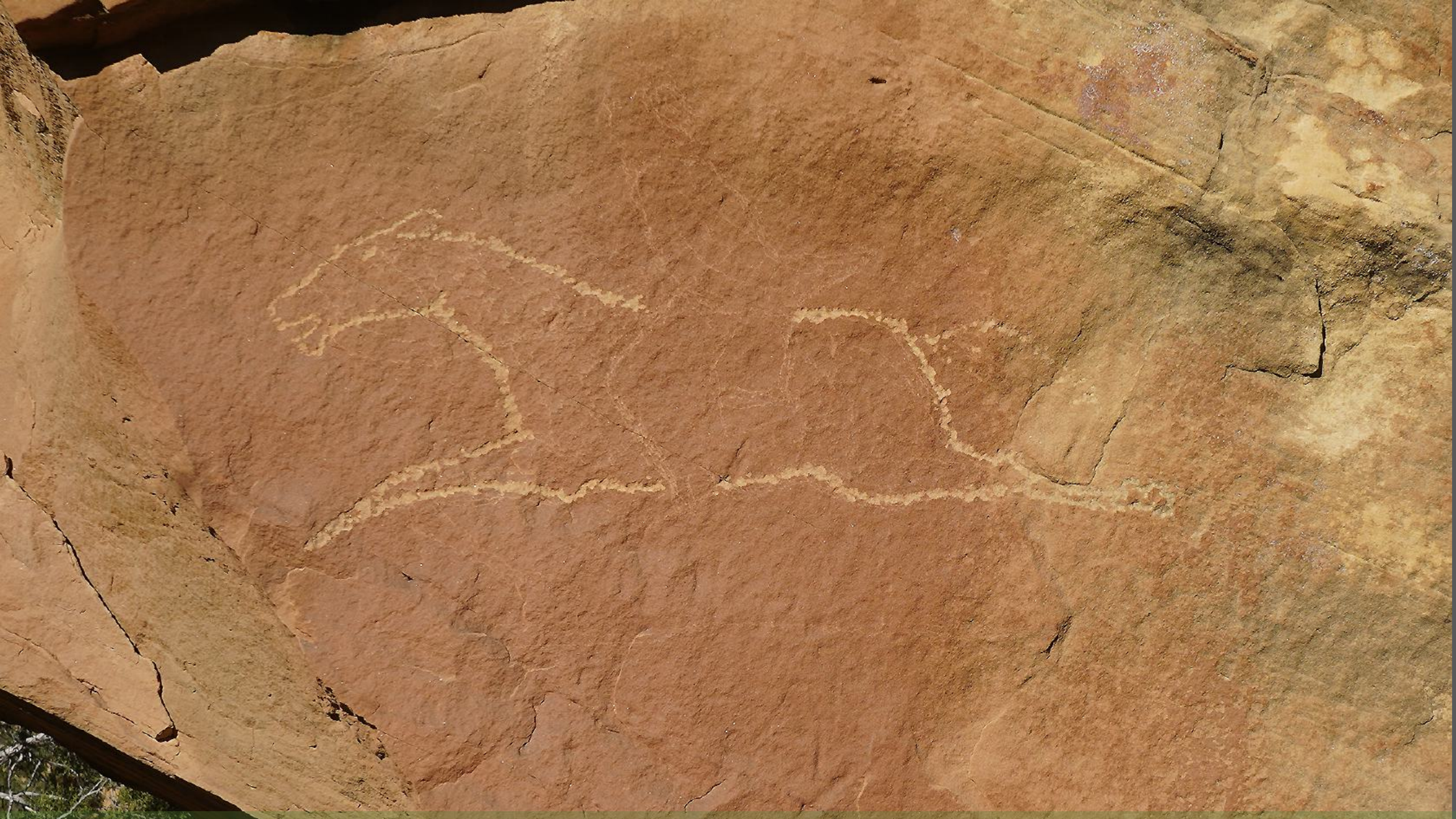
Horse/Rider One

Contrast enhanced

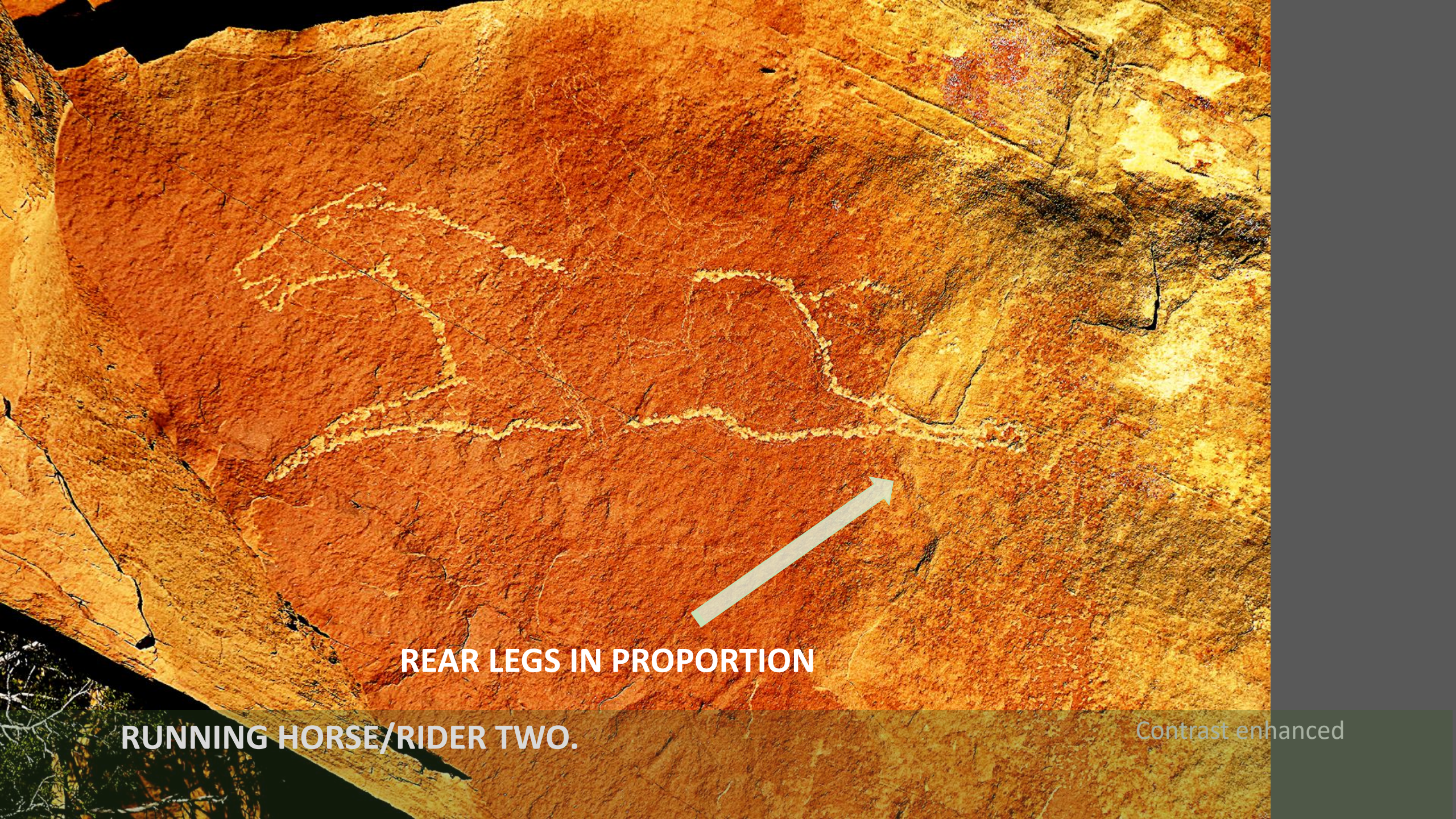








RUNNING HORSE/RIDER TWO.



REAR LEGS IN PROPORTION

RUNNING HORSE/RIDER TWO.

Contrast enhanced



Horse/Rider Three

Contrast enhanced

A photograph of a wooden fence gate in a rural setting. The gate is made of weathered wooden posts and rails, with a wire mesh section on the right. The background shows a grassy field, several large trees with green and yellowing leaves, and rolling hills under a clear sky. The lighting is bright, suggesting daytime.

**RANCH HAND "LEONARDO"
REARING HORSE PANEL
LEONARDO REFERENCE**

RANCH GATE, no longer in use

David Sucec, BCS PROJECT.



RANCH HAND SITE ONE
JINTAH BASIN, October 2022



RANCH HAND SITE ONE

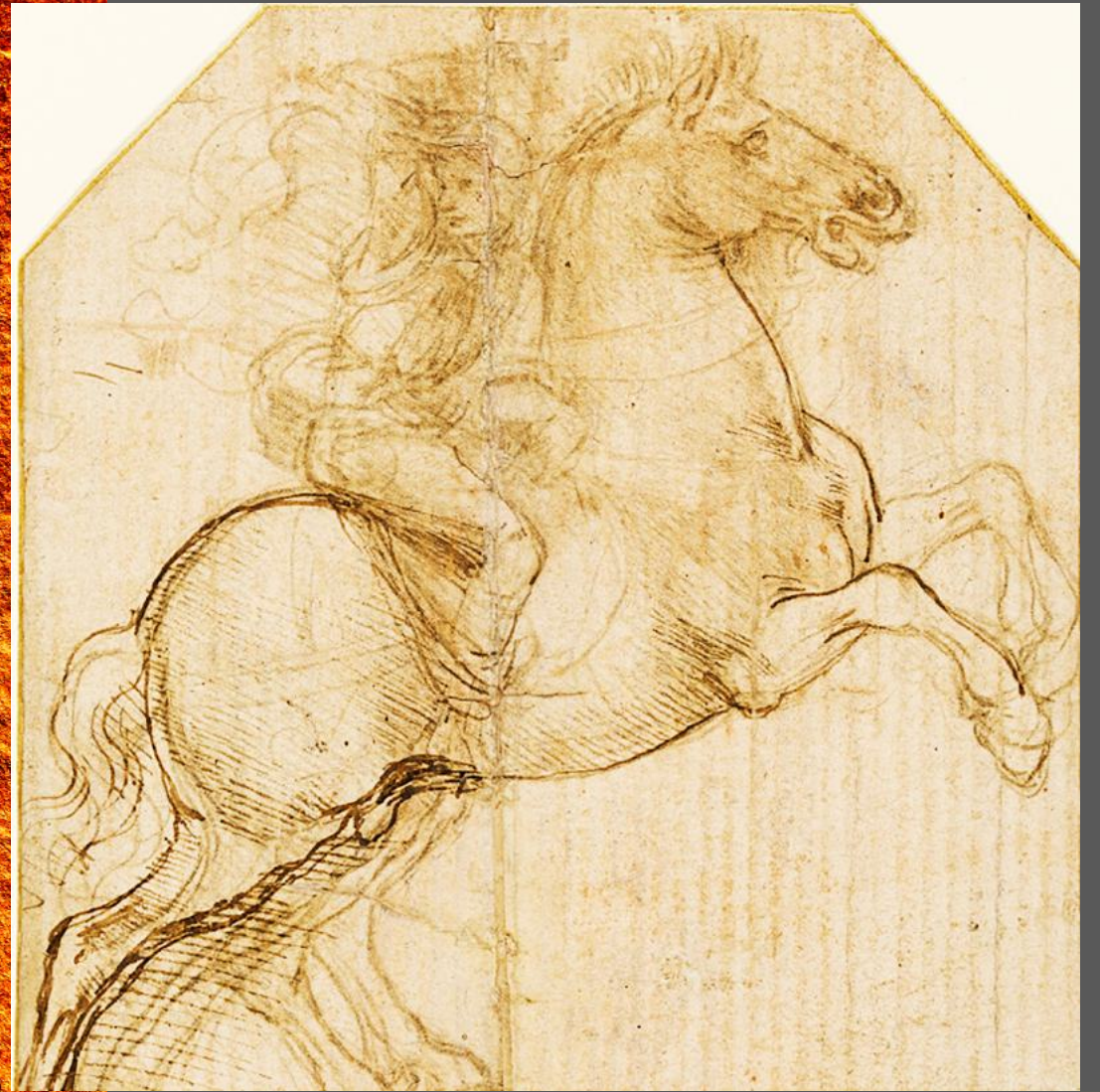


RANCH HAND SITE ONE



RANCH HAND SITE ONE, CENTRAL PANEL

Contrast enhanced



RIDER ON REARING HORSE, LEONARDO DA VINCI



MONA LISA, Leonardo da Vinci



Image enhanced

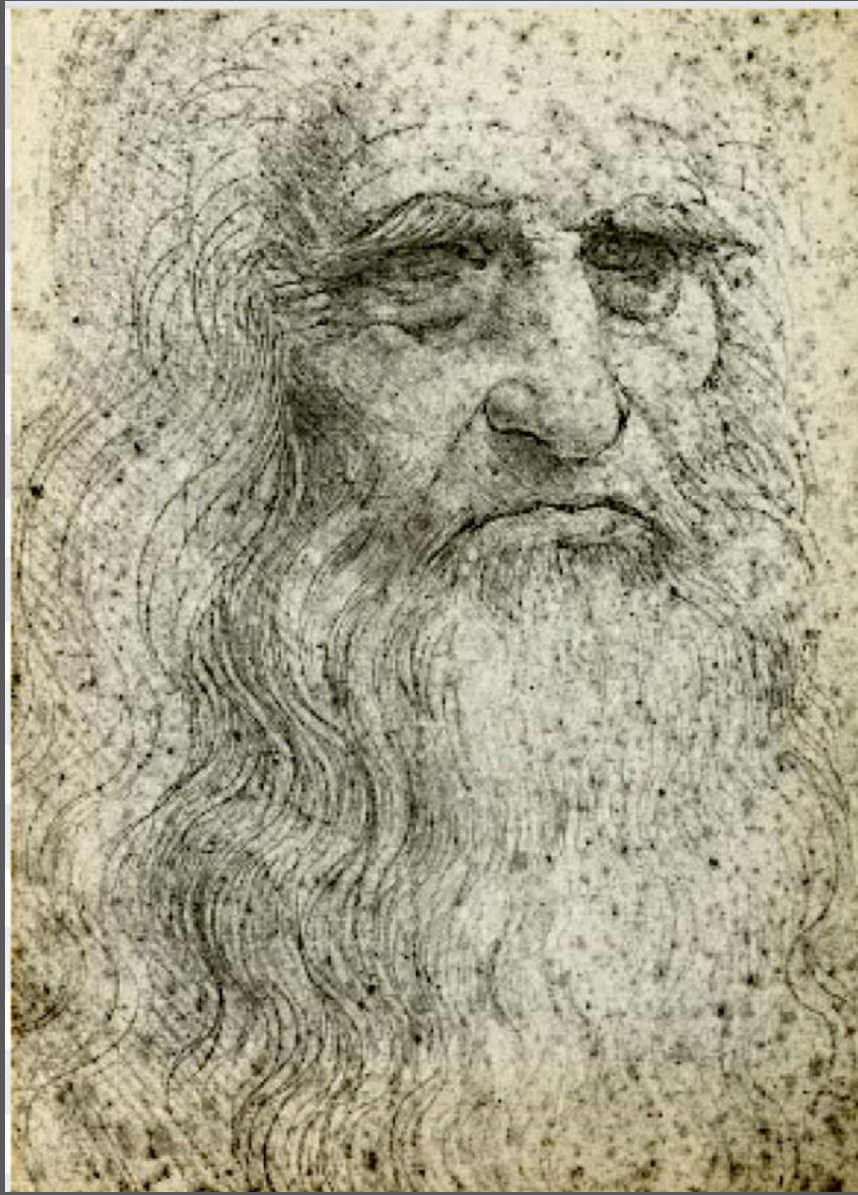
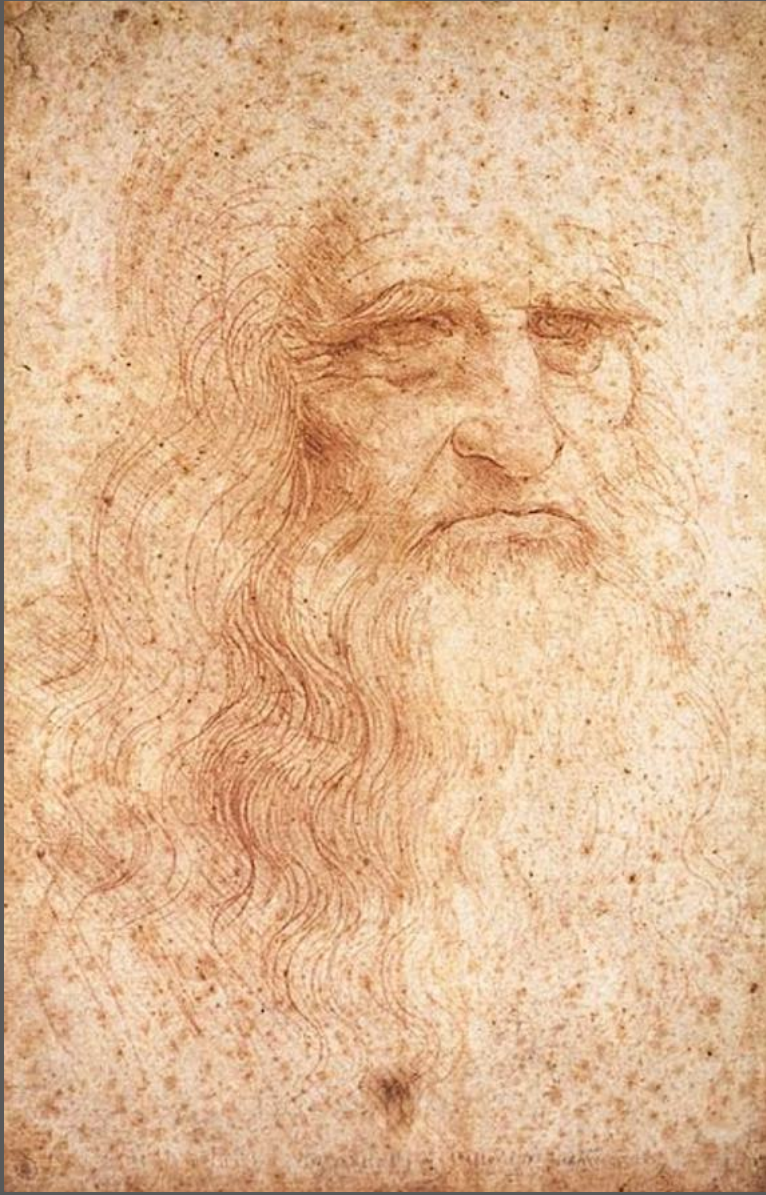


RIDER ON REARING HORSE, LEONARDO DA VINCI

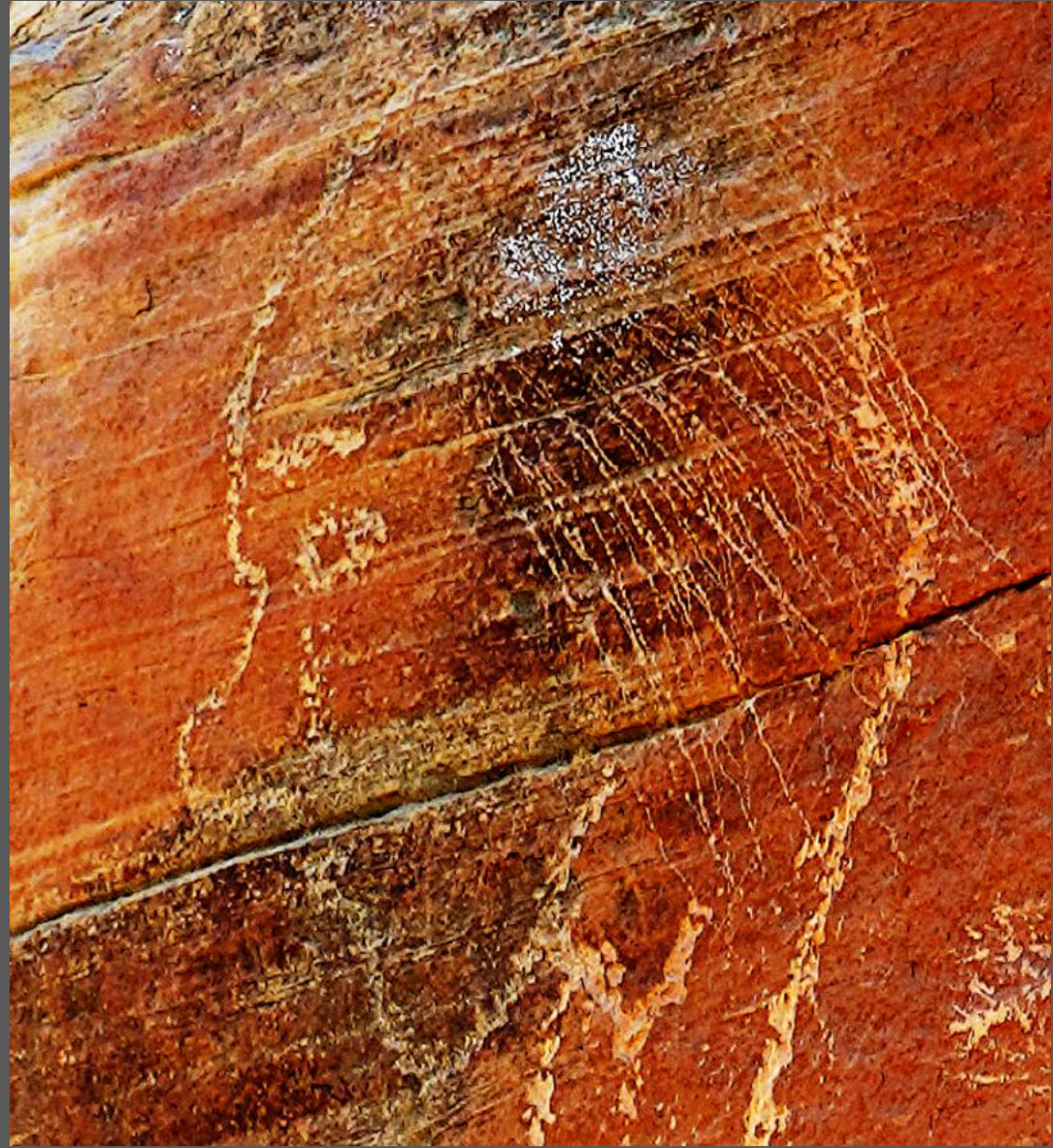
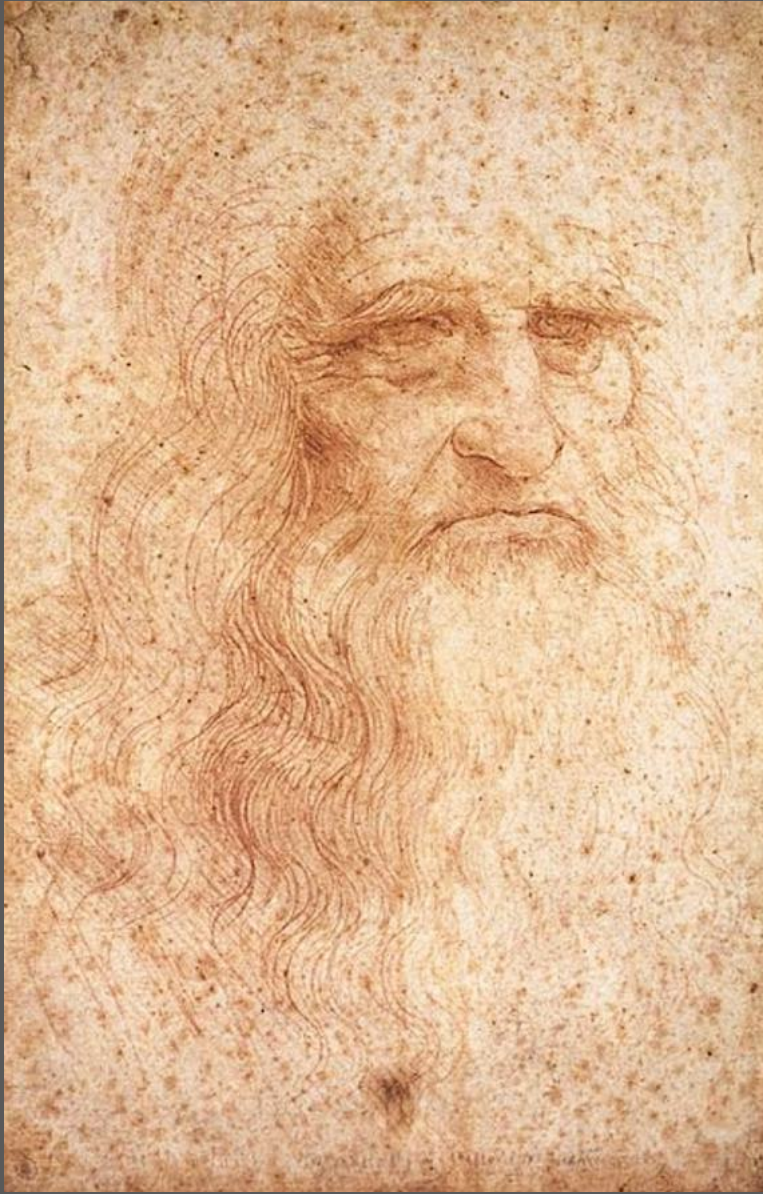


Napoleon Bonaparte by Jacques Louis David





LEONARDO SELF PORTRAT, red chalk



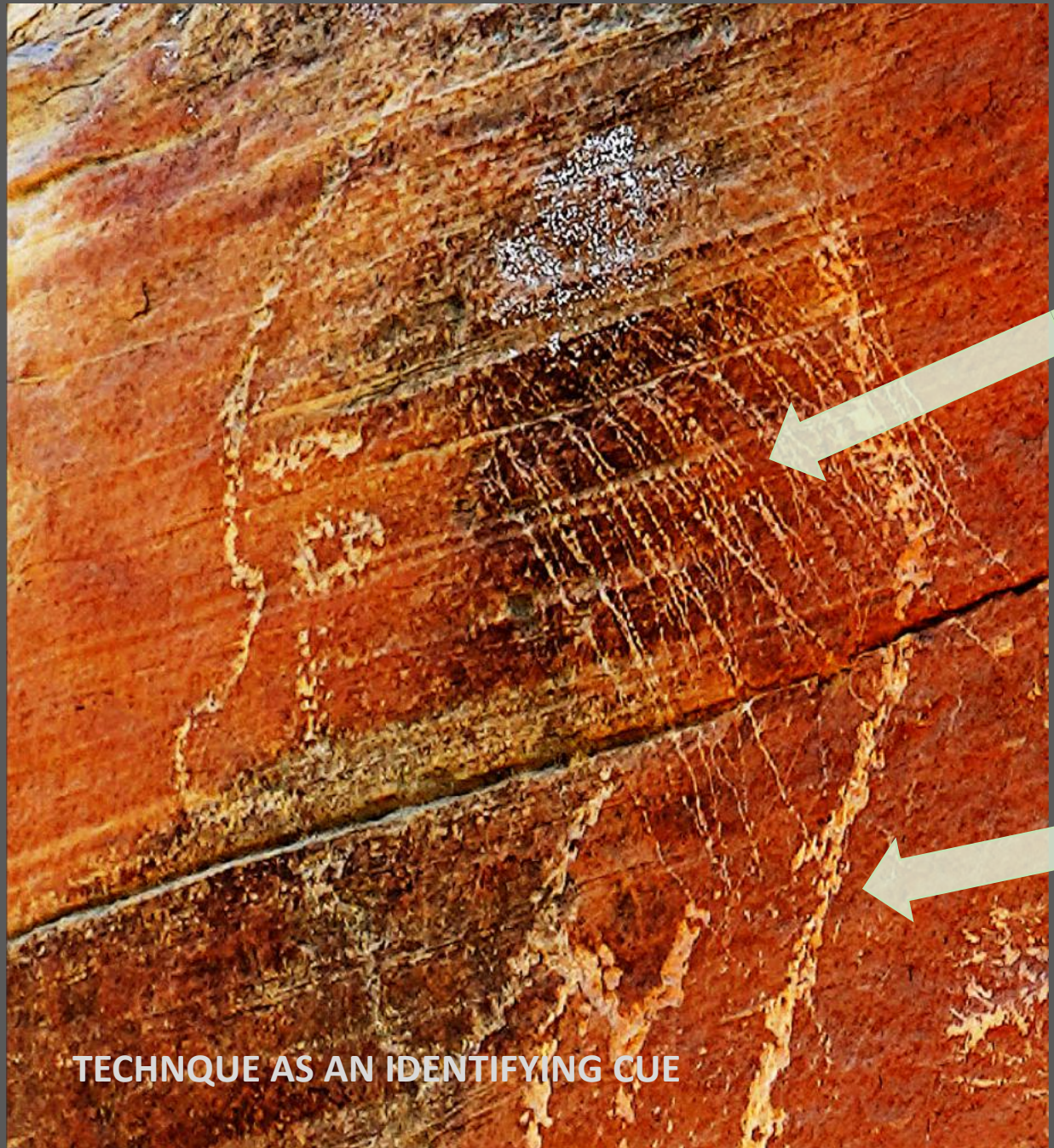
LEONARDO SELF PORTRAT, red chalk



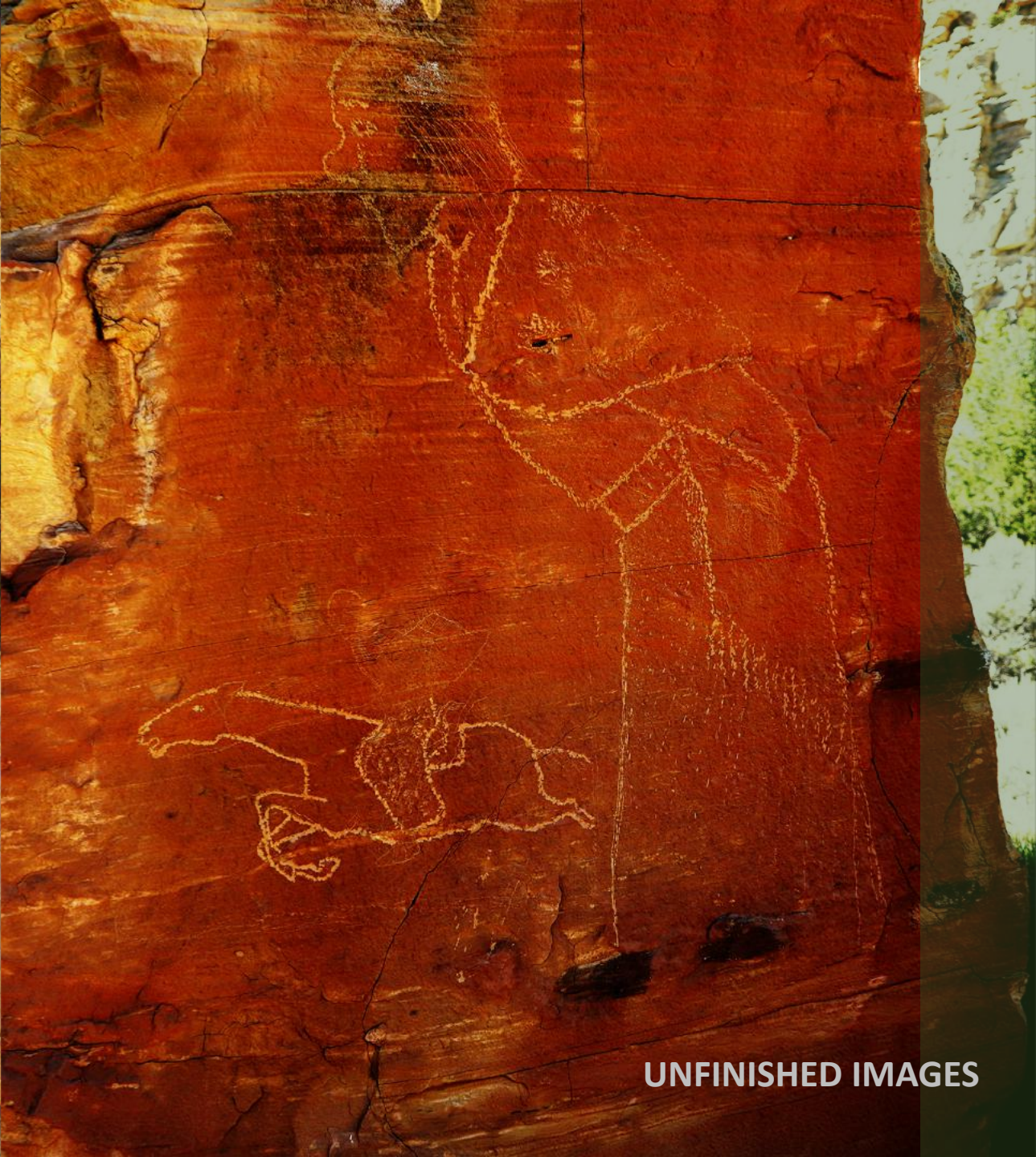
LEFT HANDED CROSS HATCHING



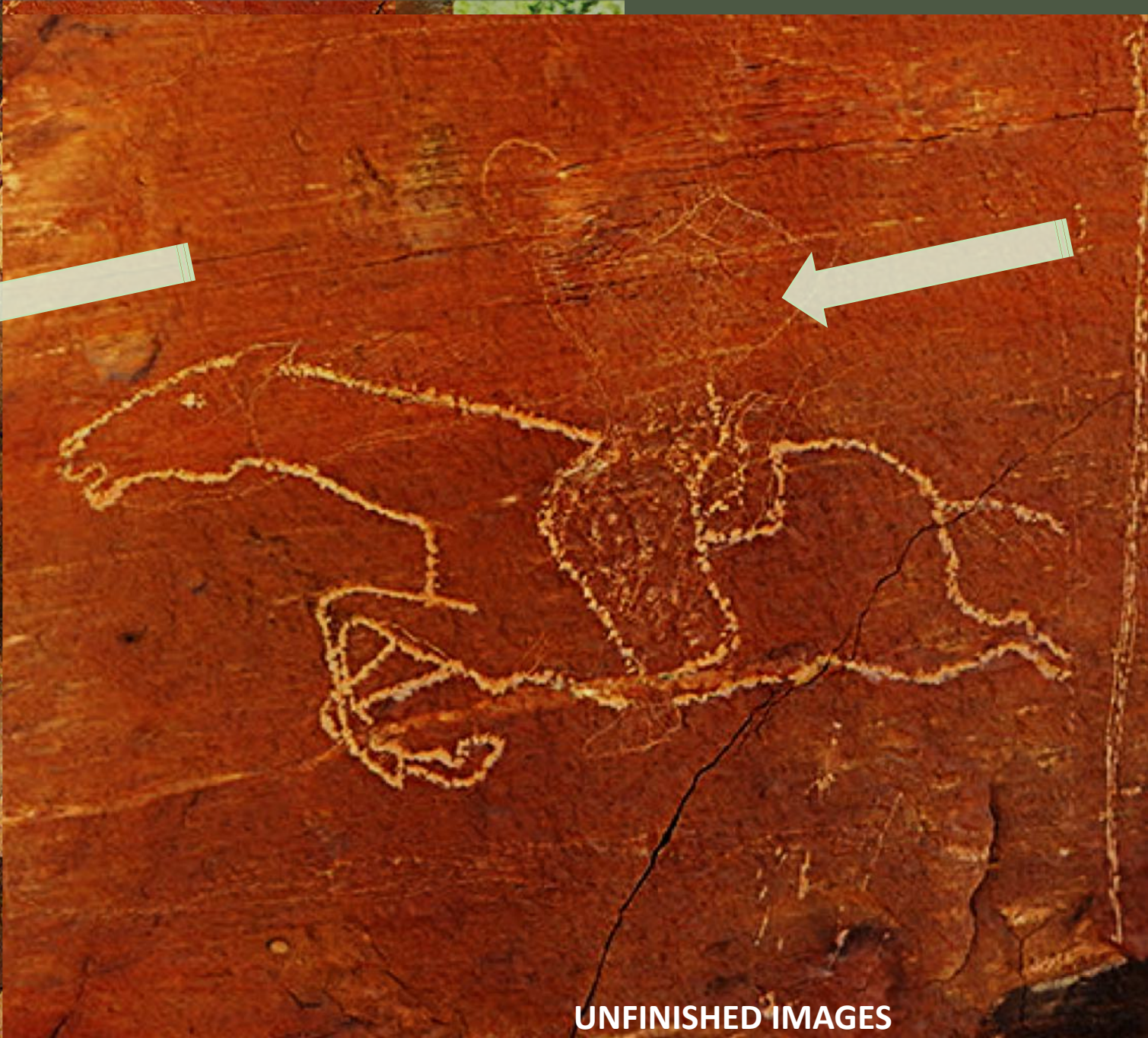
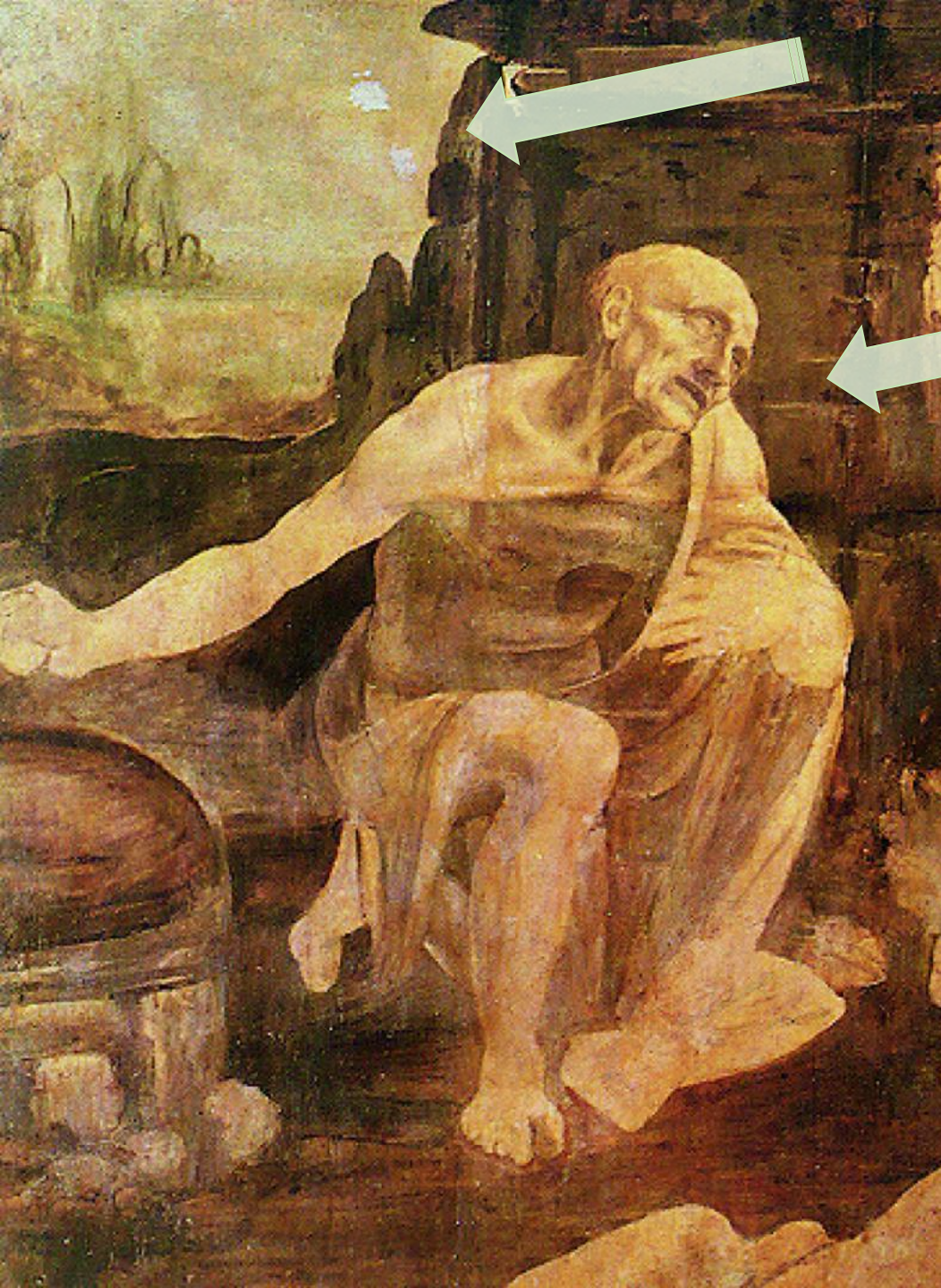
LEONARDO'S LEFT HANDED CROSSHATCHING



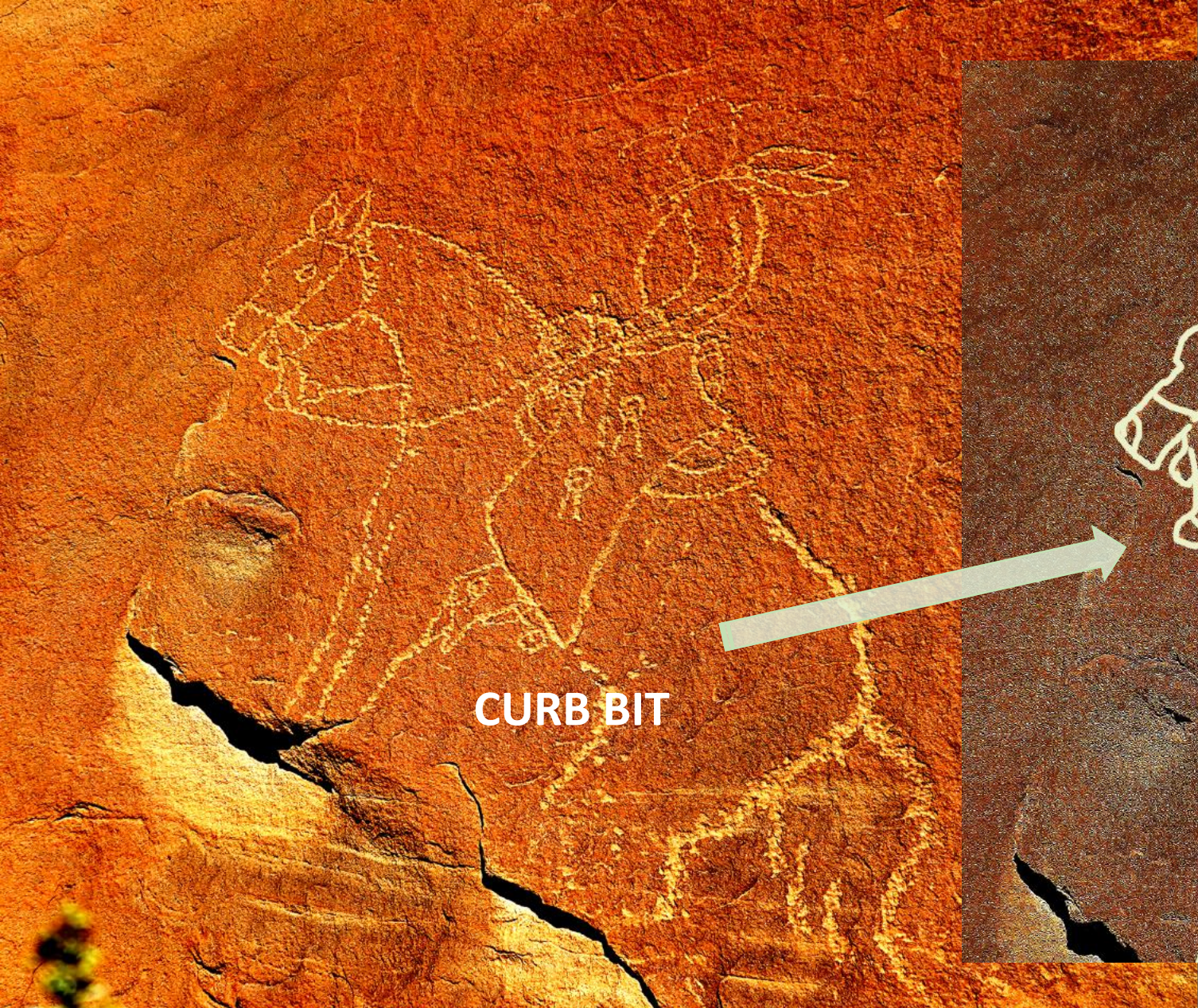
TECHNIQUE AS AN IDENTIFYING CUE



UNFINISHED IMAGES



UNFINISHED IMAGES

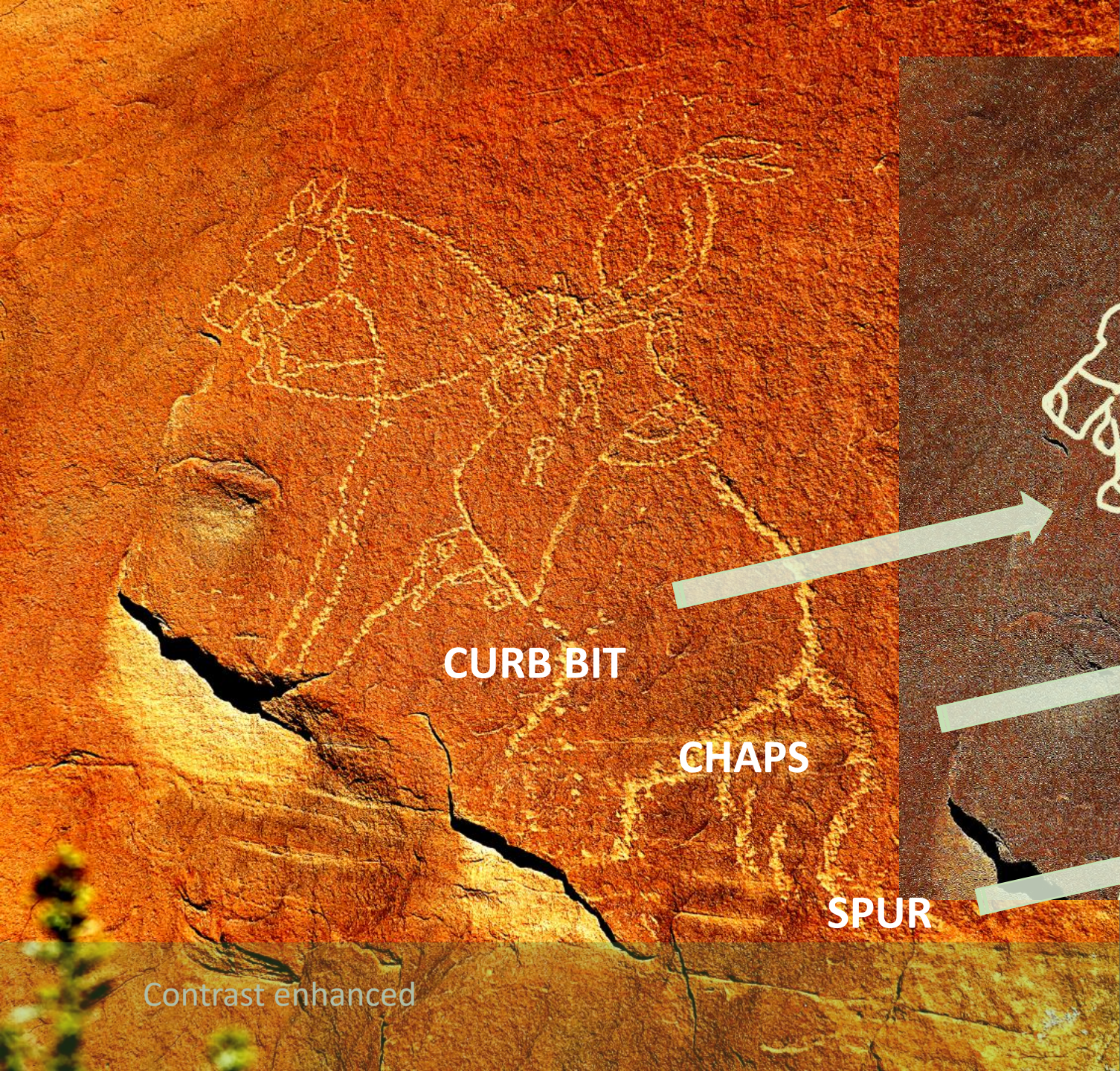


CURB BIT



PROPORTIONAL ACCURACY, DETAILS

Contrast enhanced



CURB BIT

CHAPS

SPUR

Contrast enhanced



PROPORTIONAL ACCURACY, DETAILS





COMPARE RIDER IMAGES



INDIAN HEAD

HORSE HEAD

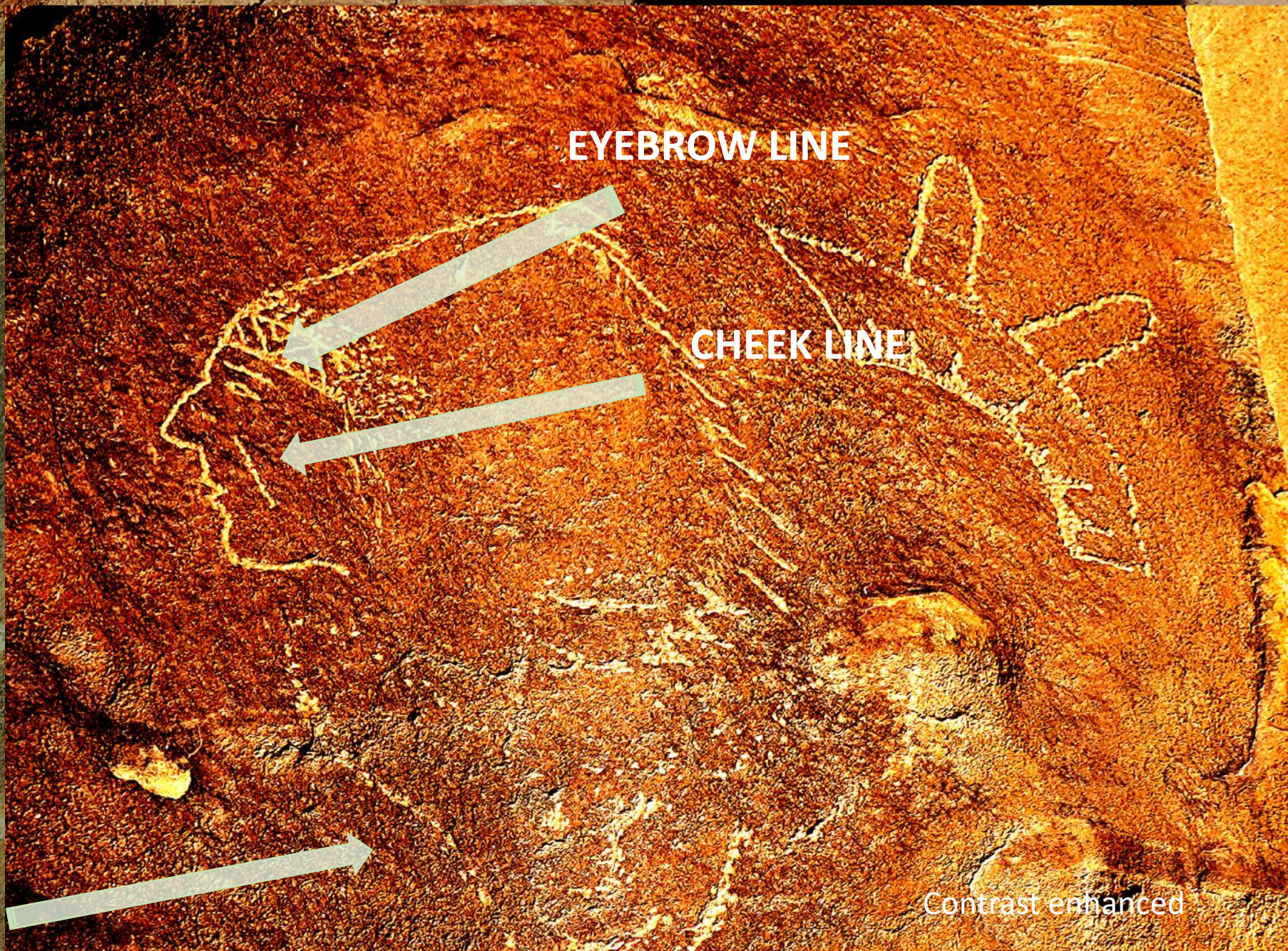
MOST REFINED IMAGE



RANCH HAND SITE ONE



RANCH HAND SITE ONE



EYEBROW LINE

CHEEK LINE

Contrast enhanced



RANCH HAND SITE ONE

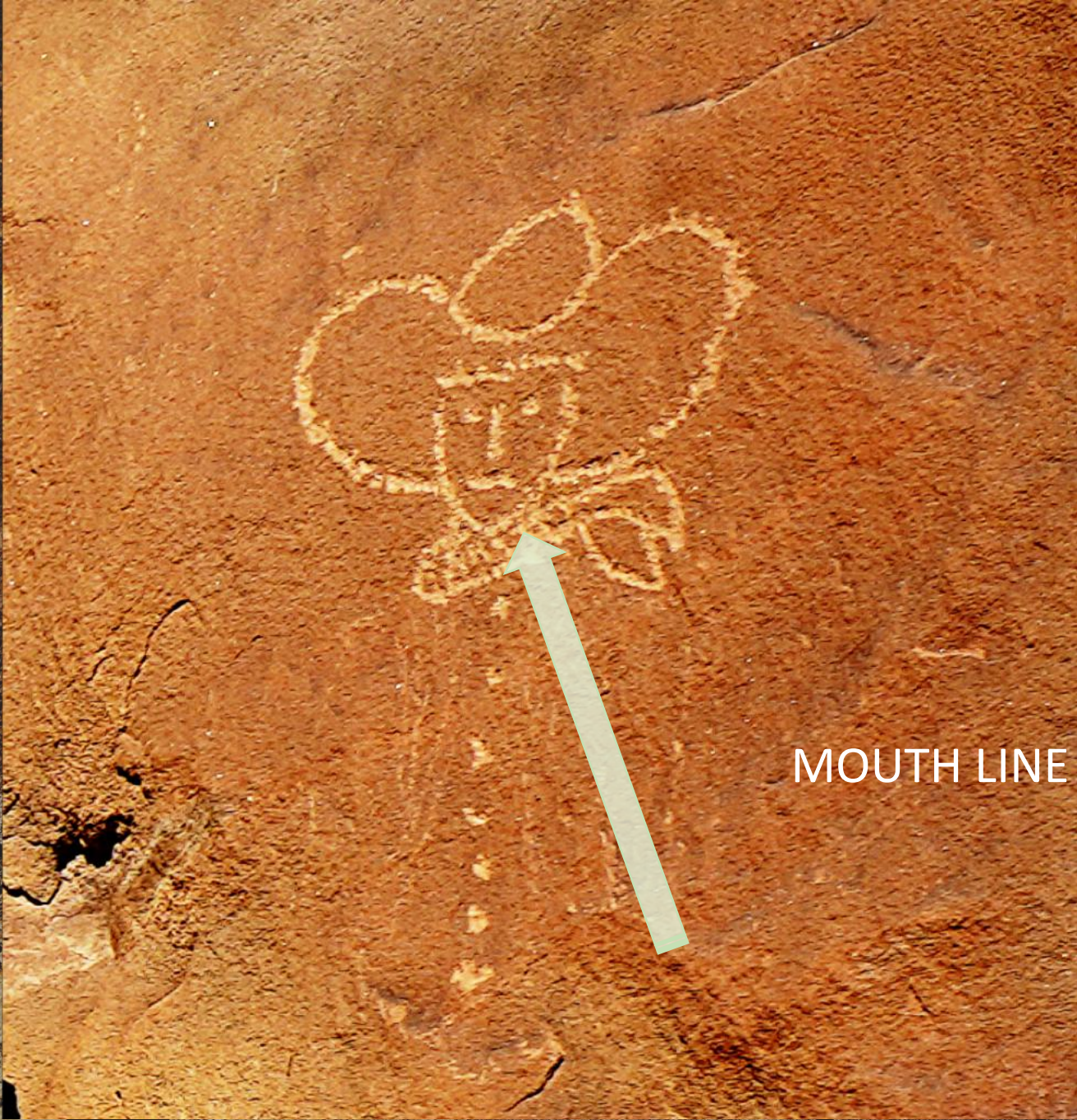




FOREHEAD LINE



Contrast enhanced




MOUTH LINE EXTENDS HAT LINE



Contrast enhanced



RIGHT PANEL, RANCH HAND SITE ONE...**STESON (STETSON)**



**RANCH HAND "LEONARDO"
WORDS, NAMES AND BRANDS**

RANCH GATE, no longer in use

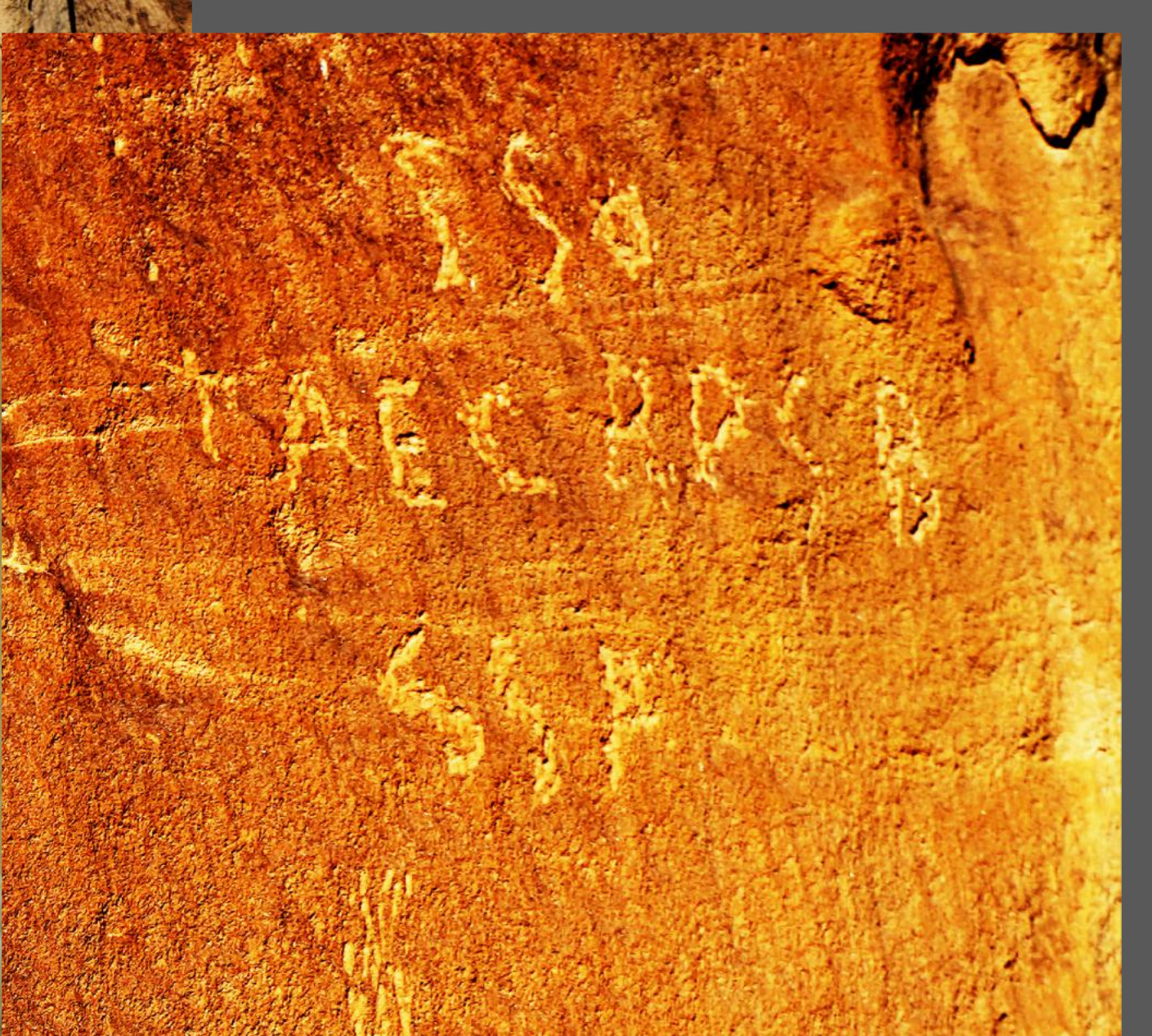
David Sucec, BCS PROJECT.

F·A·BREWER
- 1918 -

F·A·C

F·A·BREWER
— 1918 —





RIGHT PANEL, RANCH HAND SITE ONE

Contrast enhanced

HELEN.C.

SNOB





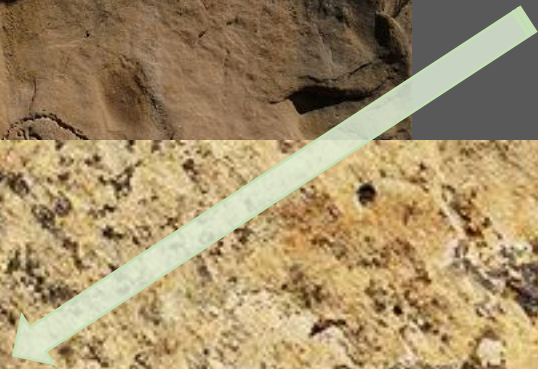
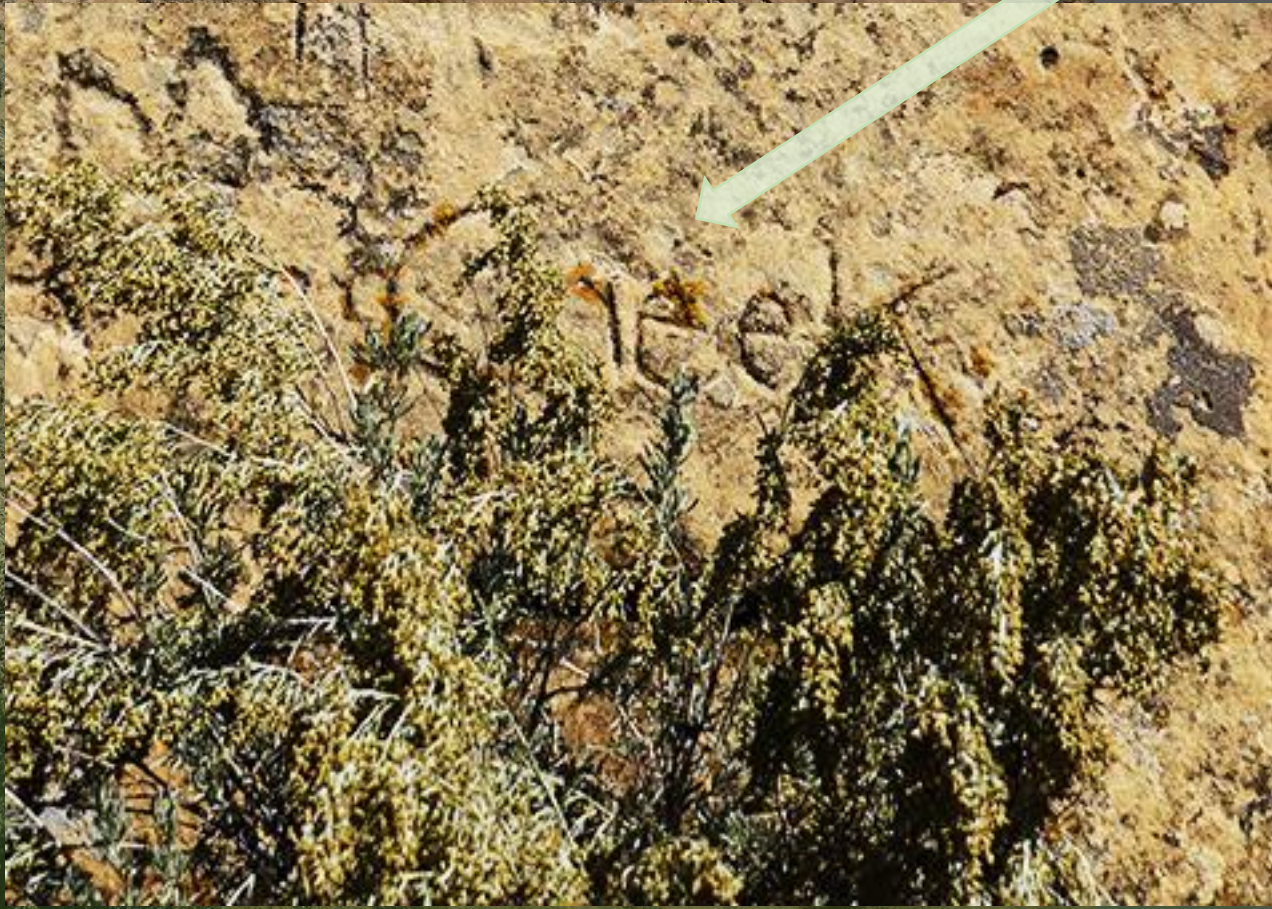
NOTICE THE FORM AND EXECUTION OF THE LETTERS.



RANCH HAND SITE THREE



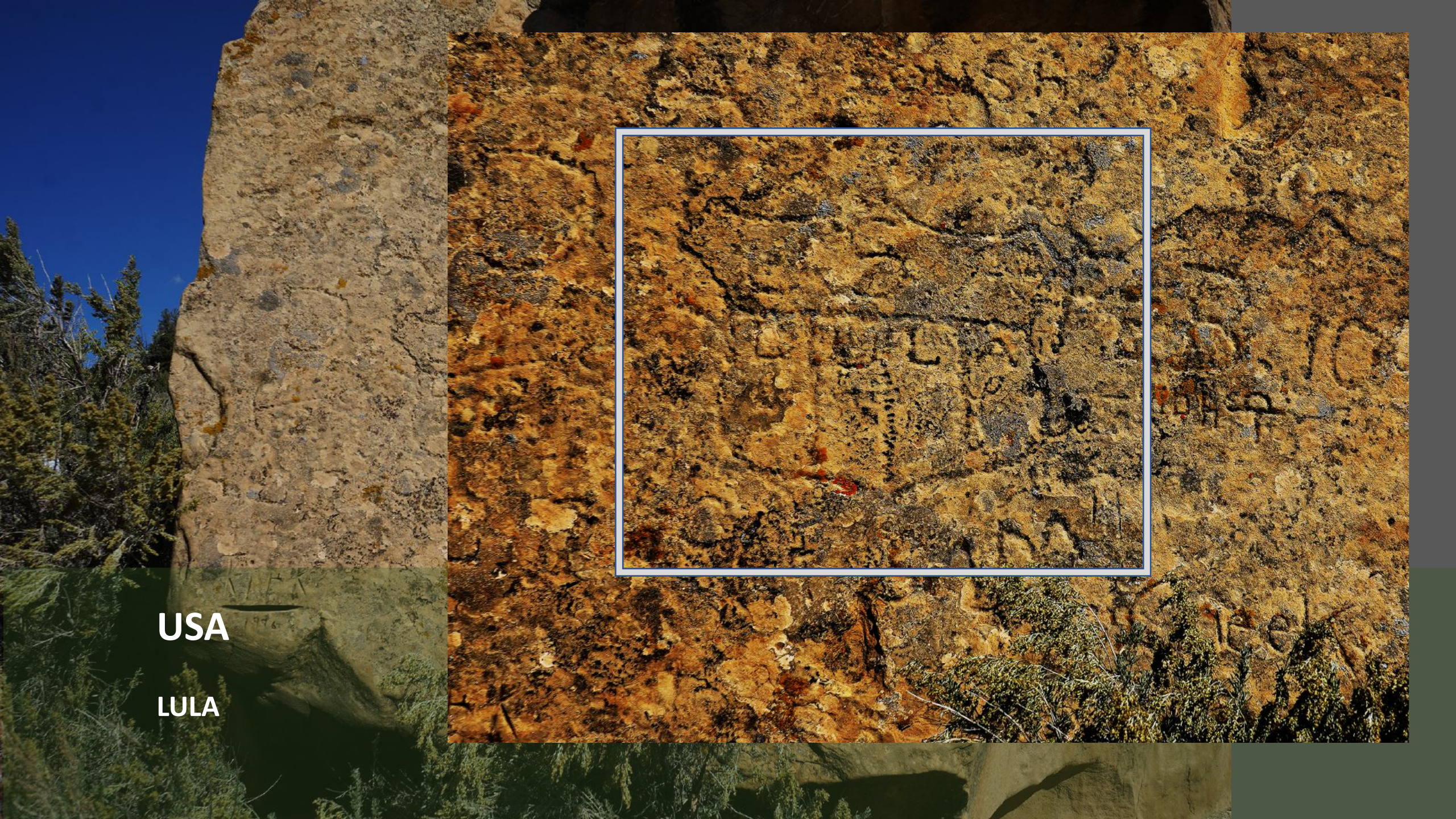
GREEK (?)







RANCH HAND SITE THREE



USA

LULA





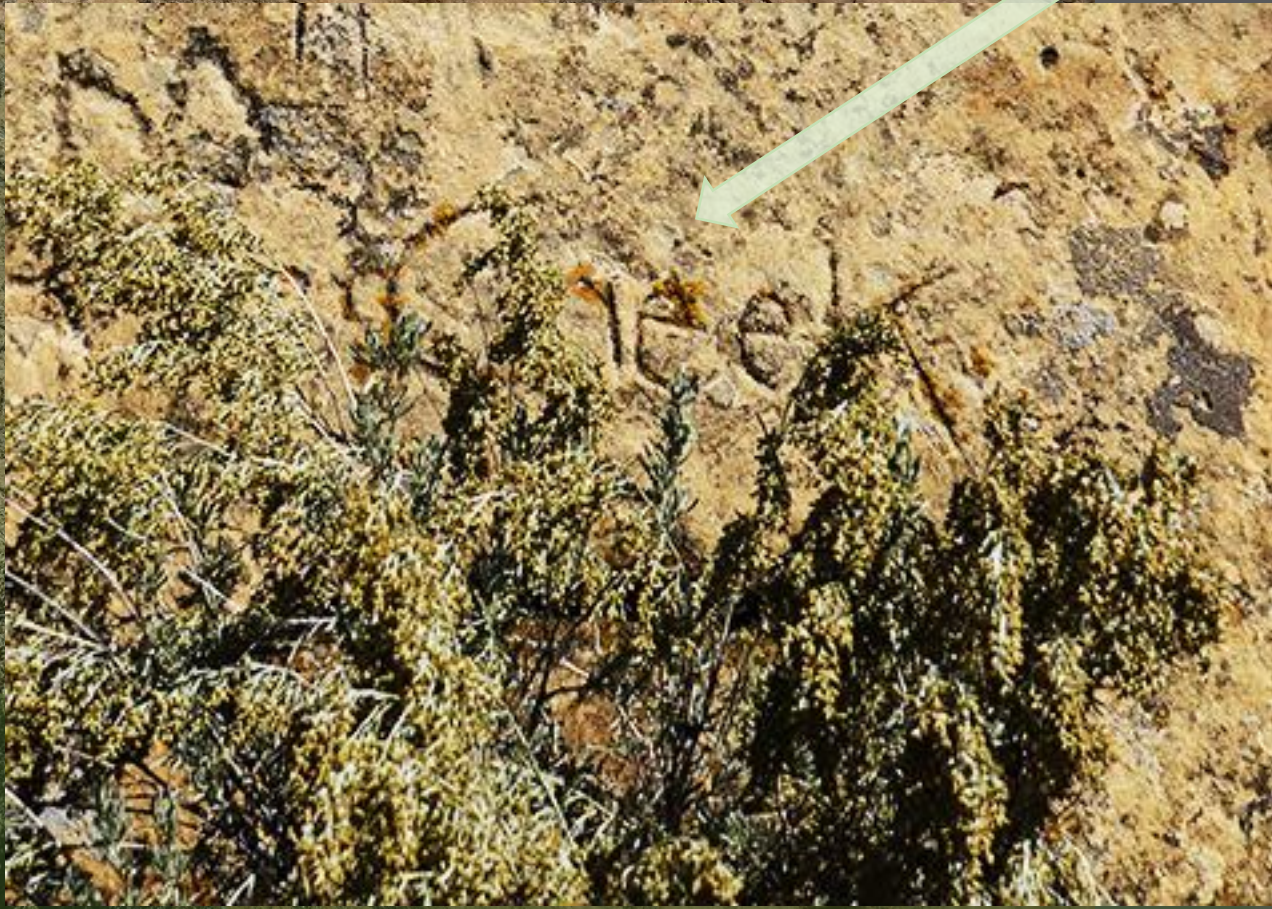
CC
1929



RANCH HAND SITE THREE

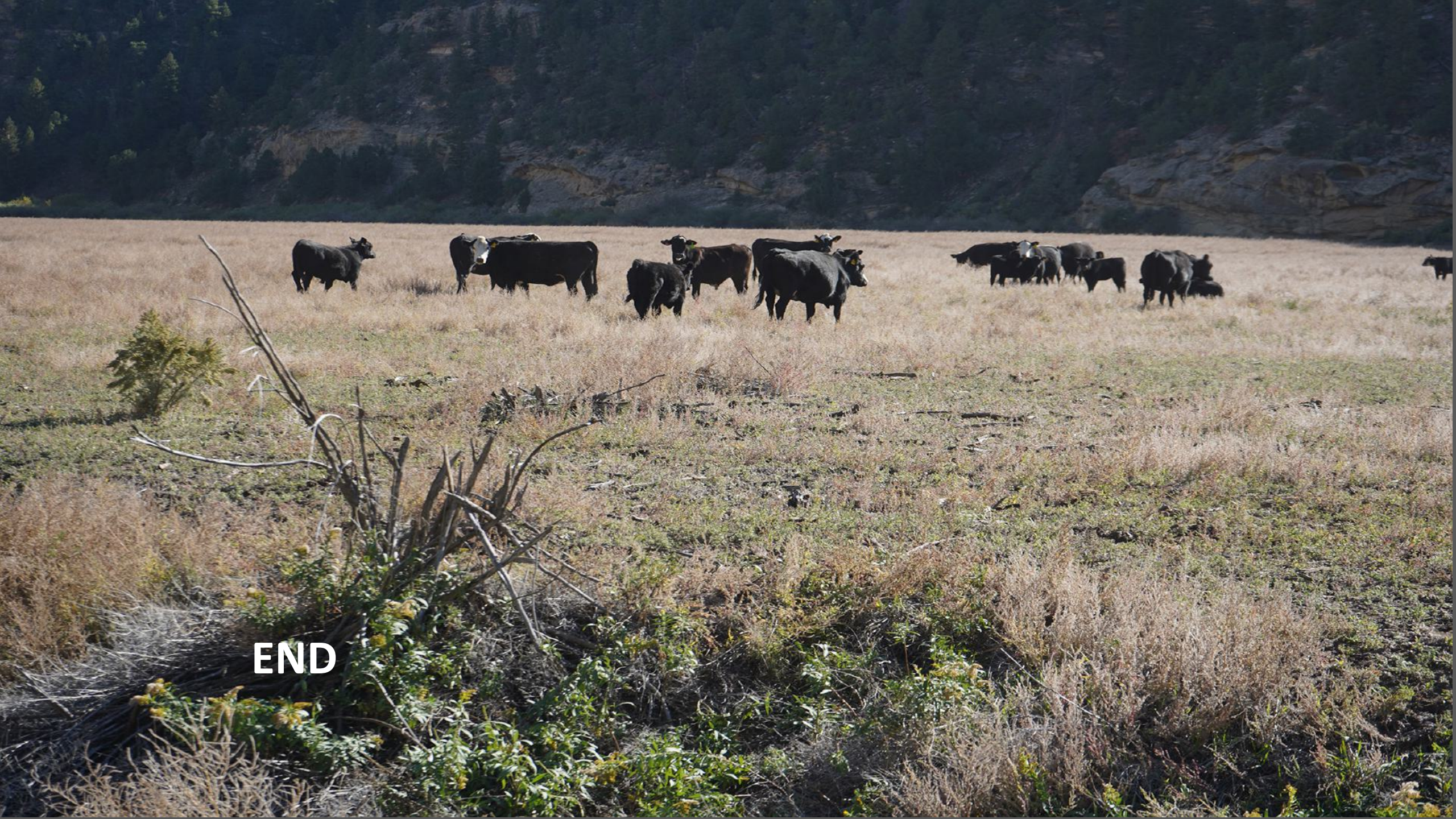


GREEK (?)





RANCH HAND SITE THREE, an unusually well-formed horse, possibly Ute.



END